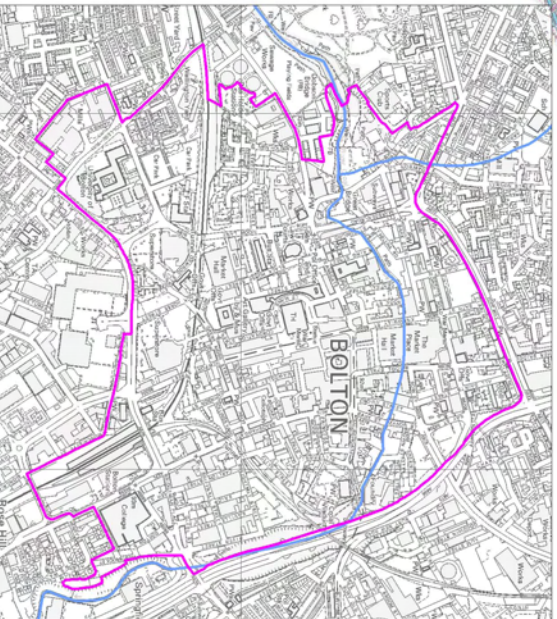


BOLTON TOWN CENTRE DEVELOPMENT OPPORTUNITIES AREA



BOLTON LEVEL 1 UPDATE & LEVEL 2 STRATEGIC FLOOD RISK ASSESSMENT

BOLTON STUDY AREA OVERVIEW

- Bolton Boundary
- Renewal Areas - Inner Bolton, Breightmet & Farworth
- River Centrelines
- Canals
- Town Centre Key Development Opportunities Area
- Loco Works, Horwich Core Strategy Area
- Catcuse Development Site

Notes:

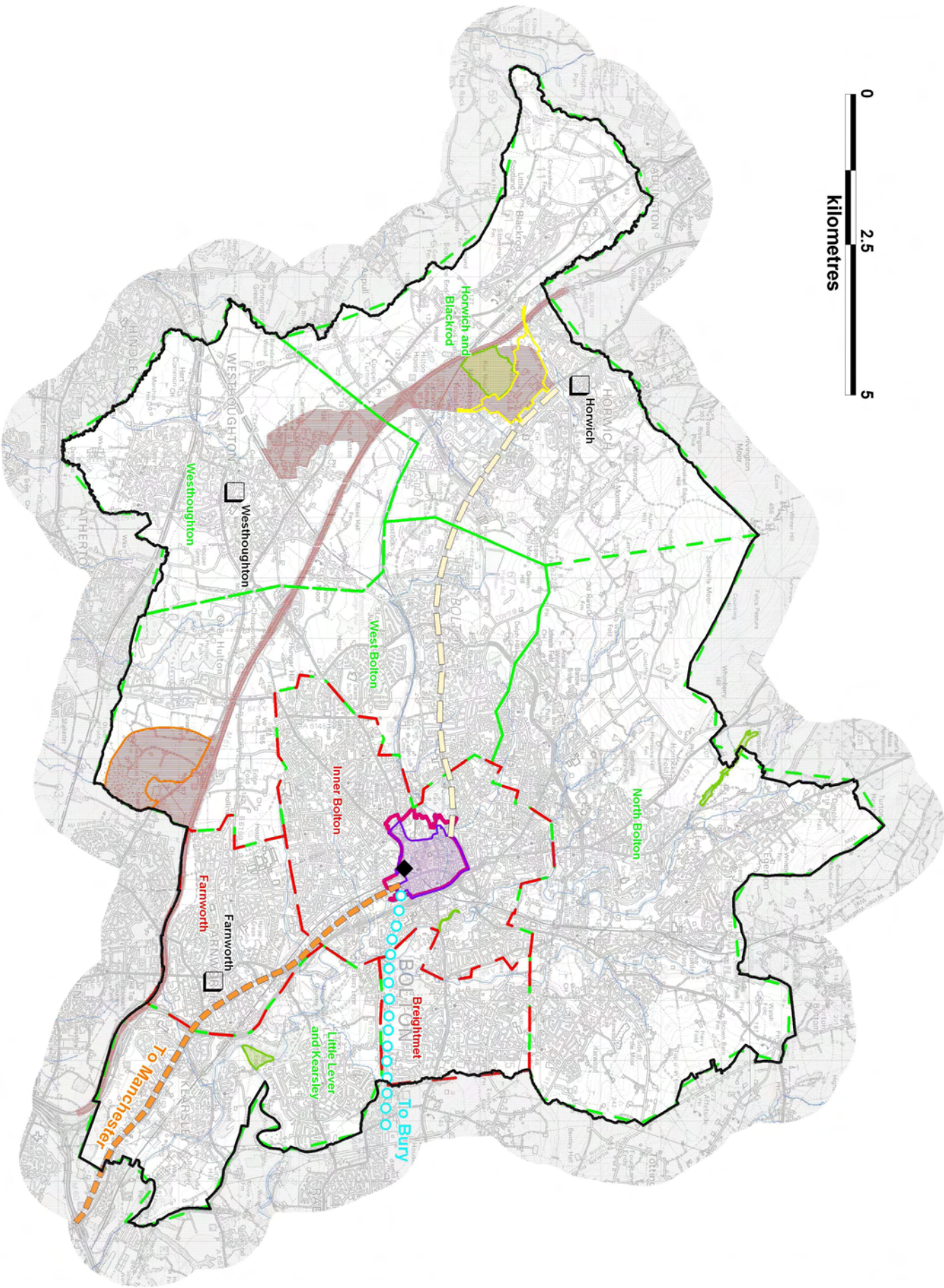
Copyright
 This map is reproduced from Ordnance Survey data supplied to the
 Esri/Mapbox/Aerial Imagery Service.
 © Crown Copyright and the Ordnance Survey 2020.
 This map is reproduced from Ordnance Survey data supplied to the
 Esri/Mapbox/Aerial Imagery Service.
 © Crown Copyright and the Ordnance Survey 2020.
 This map is reproduced from Ordnance Survey data supplied to the
 Esri/Mapbox/Aerial Imagery Service.
 © Crown Copyright and the Ordnance Survey 2020.

Drawn for CONSULTATION

Project Number	D125483	Drawn by	AS SHOWN
Client	MC	Reviewed by	AR
Issue / Check	Issue / Check	Date	23.11.09



D125483 - Figure 1-1



BOLTON LEVEL 1 UPDATE & LEVEL 2 STRATEGIC FLOOD RISK ASSESSMENT

BOLTON OVERVIEW - CORE STRATEGY PREFERRED OPTIONS KEY DEVELOPMENT AREAS

- Legend**
- Bolton District Boundary
 - Outer Area
 - Renewal Areas - Inner Bolton, Broughton & Farnworth
 - Town Centre Key Development Opportunity Area
 - Redd TCAP
 - Loco Works, Horwich Core Strategy Area
 - Culture Development Site
 - CBC Bolton Horwich
 - RBT Bolton to Manchester M61 Corridor
 - Bury Cycle Strategy
 - Bolton Interchange
 - Town Centres
 - River Centrelines
 - Sites of Special Scientific Interest (SSSI)

Notes

Copyright
Some features of this map are based on information provided by the
© Crown Copyright. All rights reserved. Environmental Agency 2008
This map is reproduced from Ordnance Survey on behalf of the
© Crown Copyright. All rights reserved. Ordnance Survey 2008
© Crown Copyright 2008. All Rights Reserved. © Brier, MFC 2008

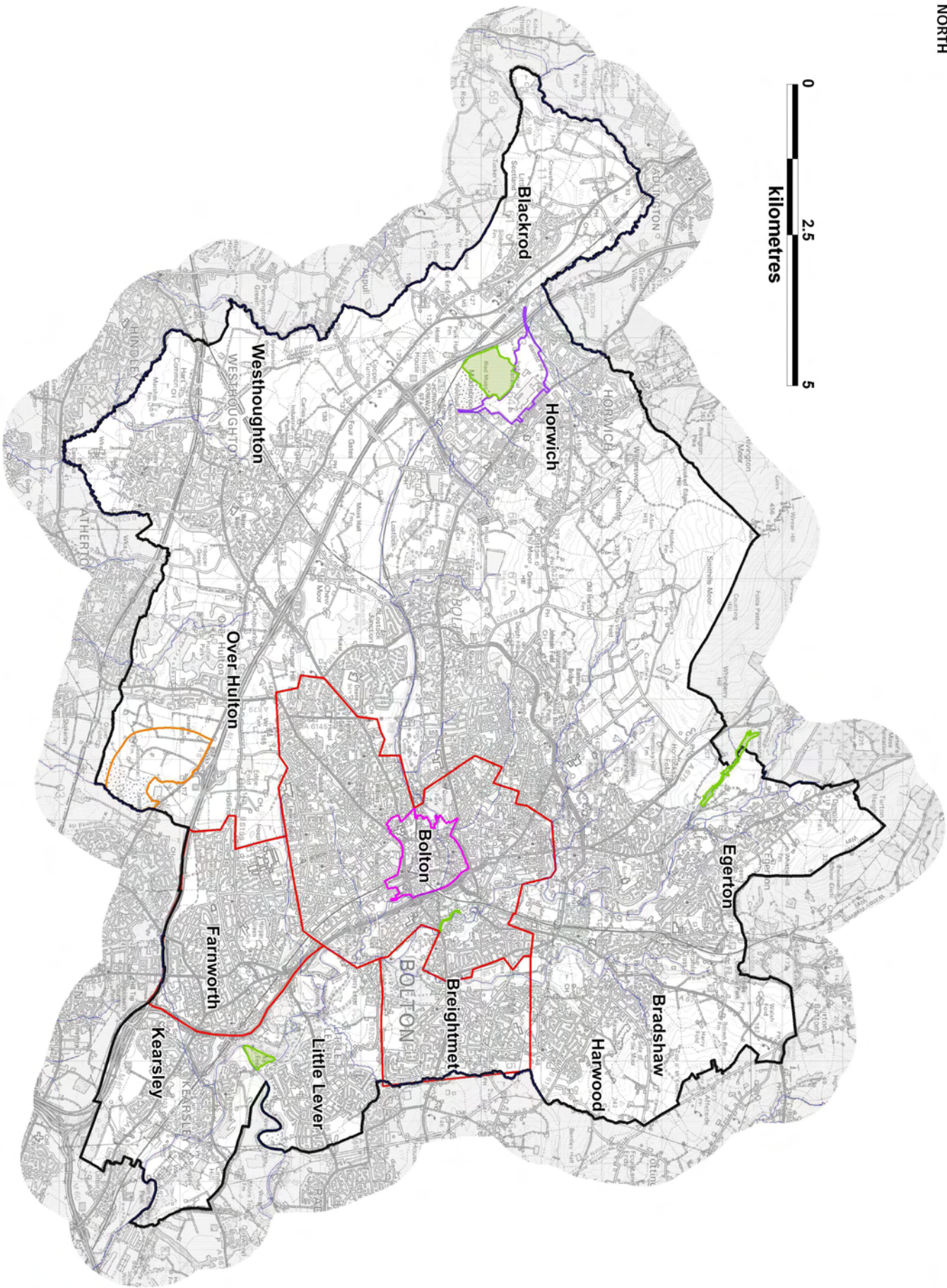
DRAFT FOR CONSULTATION

PROJECT CHAIR	DR D25481	ASSISTANT CHAIR	ASSISTANT CHAIR
MEMBER	MEMBER	MEMBER	MEMBER
MEMBER	MEMBER	MEMBER	MEMBER



Scott Wilson
54 Princess Street
Manchester
M1 6HS

D125481 - Figure 3-1



**BOLTON LEVEL 1 UPDATE
& LEVEL 2 STRATEGIC FLOOD
RISK ASSESSMENT**

**BOLTON OVERVIEW -
ENVIRONMENTAL CONSTRAINTS/
OPPORTUNITIES & FLOOD ZONES**

- Legend**
- Bolton District Boundary
 - Renewal Areas - Inner Bolton, Breightmet & Farworth
 - Town Centre Key Development Opportunity Area
 - Loco Works, Horwich Core Strategy Area
 - Calcare Development Site
 - River Catchlines
 - Sites of Special Scientific Interest (SSSI)

Copyright

Some elements of this map are based on information provided by the © Crown Copyright All rights reserved. Environment Agency 2008

This map is reproduced from Ordnance Survey on behalf of the © Crown Copyright. All rights reserved. Ordnance Survey Licence No: 100019280/2009. © Crown Copyright. All rights reserved. 100019280/2009

© Crown Copyright 2009. All Rights Reserved. © Bolton MBC 2009.

Project Details

DRAFT FOR CONSULTATION

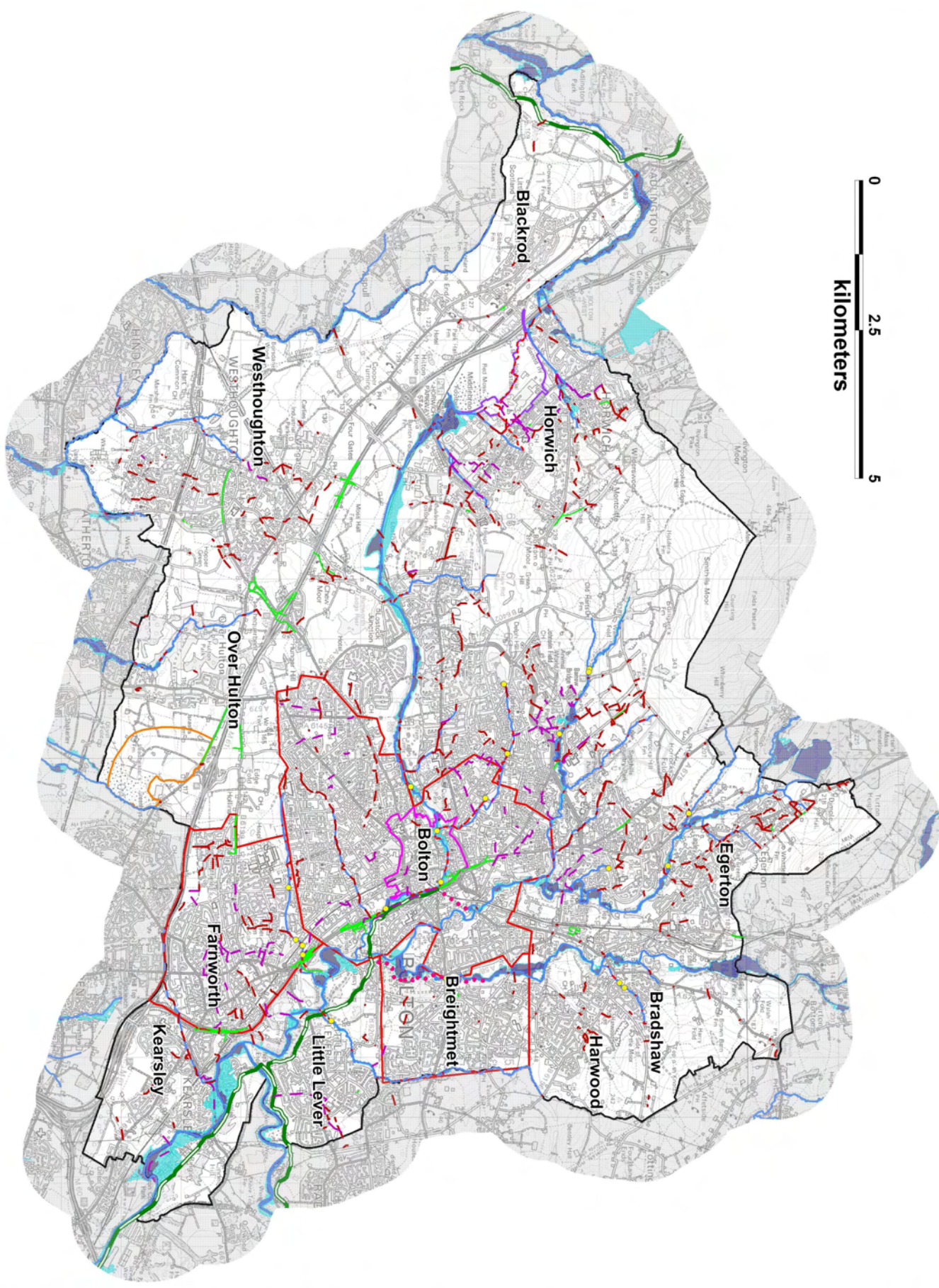
Job Number	D125481	Drawn By	AS SHOWN
Client	HB	Approved By	AR
Issue / Check	1009 / 1 CHECK	Original Date	24.11.09

Scott Wilson
54 Princess Street
Manchester
M1 6HS

Scott Wilson

Bolton Council

D125481 - Figure 3-2



**BOLTON LEVEL 1 UPDATE
& LEVEL 2 STRATEGIC
FLOOD RISK ASSESSMENT**

**BOLTON OVERVIEW -
FLUVIAL FLOOD RISK**

- Legend**
- Bolton District Boundary
 - River Centrelines
 - Canals
 - Highway Drain
 - Suspended Canal Feeder
 - Culverted Rivers
 - Culverted Watercourses
 - Natural
 - Diverted Watercourses (Mills & Reservoirs)
 - EA Debris Screens
 - Bolton Town Centre Key Development Opportunities Area
 - Culture Development Site
 - Looz Works, Horwich Core Strategy Area
 - Renewal Areas - Inner Bolton, Breightmet & Farnworth
 - Flood Zone 2 (<= 1 in 1000 year)
 - Flood Zone 3 (<= 1 in 100 year)

Notes

Some features of this map are based on information provided by the Environment Agency (EA) rights reserved. Environment Agency 2009

This map is reproduced from the OpenStreetMap project. OpenStreetMap is a project of the OpenStreetMap Foundation. OpenStreetMap is a registered trademark of the OpenStreetMap Foundation. OpenStreetMap is a registered trademark of the OpenStreetMap Foundation. OpenStreetMap is a registered trademark of the OpenStreetMap Foundation.

© Crown Copyright 2009. All Rights Reserved. © Bolton LBC 2009

Drawing Date: **DRAFT FOR CONSULTATION**

Project Name	Client	Drawn By	Checked By	Scale	Date
D125481	MJC	AS SHOWN	AR	1:12,000	17/12/09



D125481 - Figure 5-1



**BOLTON LEVEL 1 UPDATE
& LEVEL 2 STRATEGIC
FLOOD RISK ASSESSMENT**

**BOLTON OVERVIEW -
DETAILED MODELLING
AVAILABILITY**

- Detailed Modelling Availability**
- No Detailed Modelling Available
 - Detailed Modelling Available
 - Town Centre Key Development Opportunities
 - Calcare Development Site
 - Loco Works, Horwich Core Strategy Areas
 - Removal Areas - Inner Bolton, Breightmet & Farnworth

Notes
The Environment Agency regularly updates their Flood Map Review online maps with the results of any detailed hydraulic modelling that meet their minimum standards.

Copyright
Some features of this map are based on information provided by the Copyright © Environment Agency 2008.
This map is based upon Ordnance Survey material with the permission of Ordnance Survey on behalf of The Controller of Her Majesty's Stationery Office. Copyright and all other rights reserved. Ordnance Survey copyright 2009. All rights reserved. © Blair, MRC 2009.

DRAFT FOR CONSULTATION

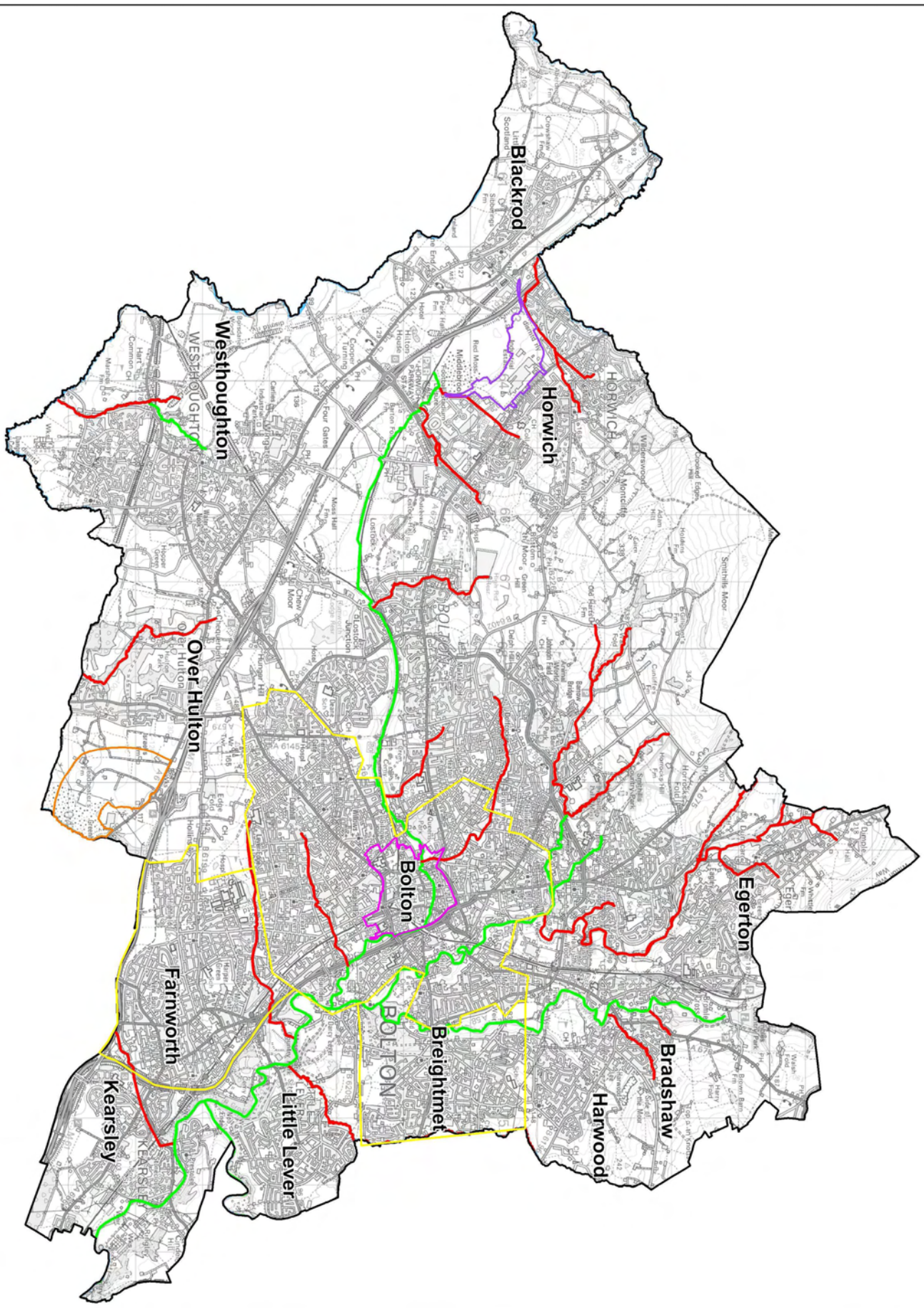
Revision Number	Description	Date
01	Issue for Consultation	24/11/2009
02	Minor amendments	24/11/2009
03	Final version	24/11/2009

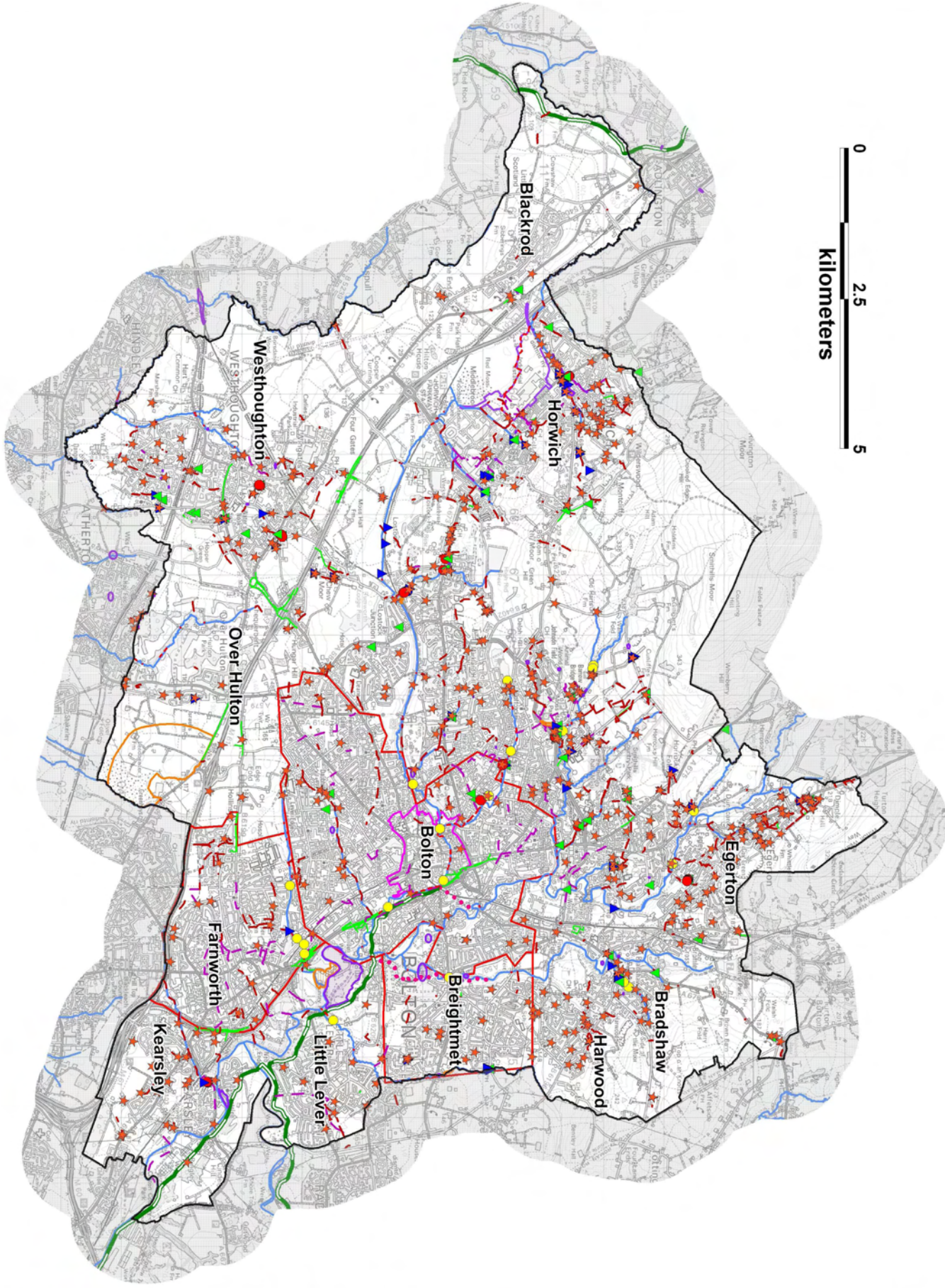


Scott Wilson
Brunel House
54 Princess Street
Manchester
M1 6HS



D125481 - Figure 5.2





BOLTON LEVEL 1 UPDATE & LEVEL 2 STRATEGIC FLOOD RISK ASSESSMENT

BOLTON OVERVIEW - REPORTED INCIDENTS OF HISTORICAL FLOODING

- Legend / Notes**
- Bolton District Boundary
 - Bolton Town Centre Key Development Opportunities Area
 - Culture Development Site
 - Looe Works, Horwich Core Strategy Area
 - Renewal Areas - Inner Bolton, Breightmet & Farworth
 - River Centrelines
 - Suspended Canal Fender
 - EA Debris Screens
 - Highway Drains
 - Canals
 - Culverted Rivers
 - Diverted Watercourses (Mills & Reservoirs)
 - Natural Watercourses
 - Reported Incidents of Historical Flooding
 - Environment Agency
 - BMBC Land Drainage Problem Areas
 - BMBC Interim Flood Locations
 - Highway
 - Repeated
 - Single Significant
 - Repeated Significant
 - Significant

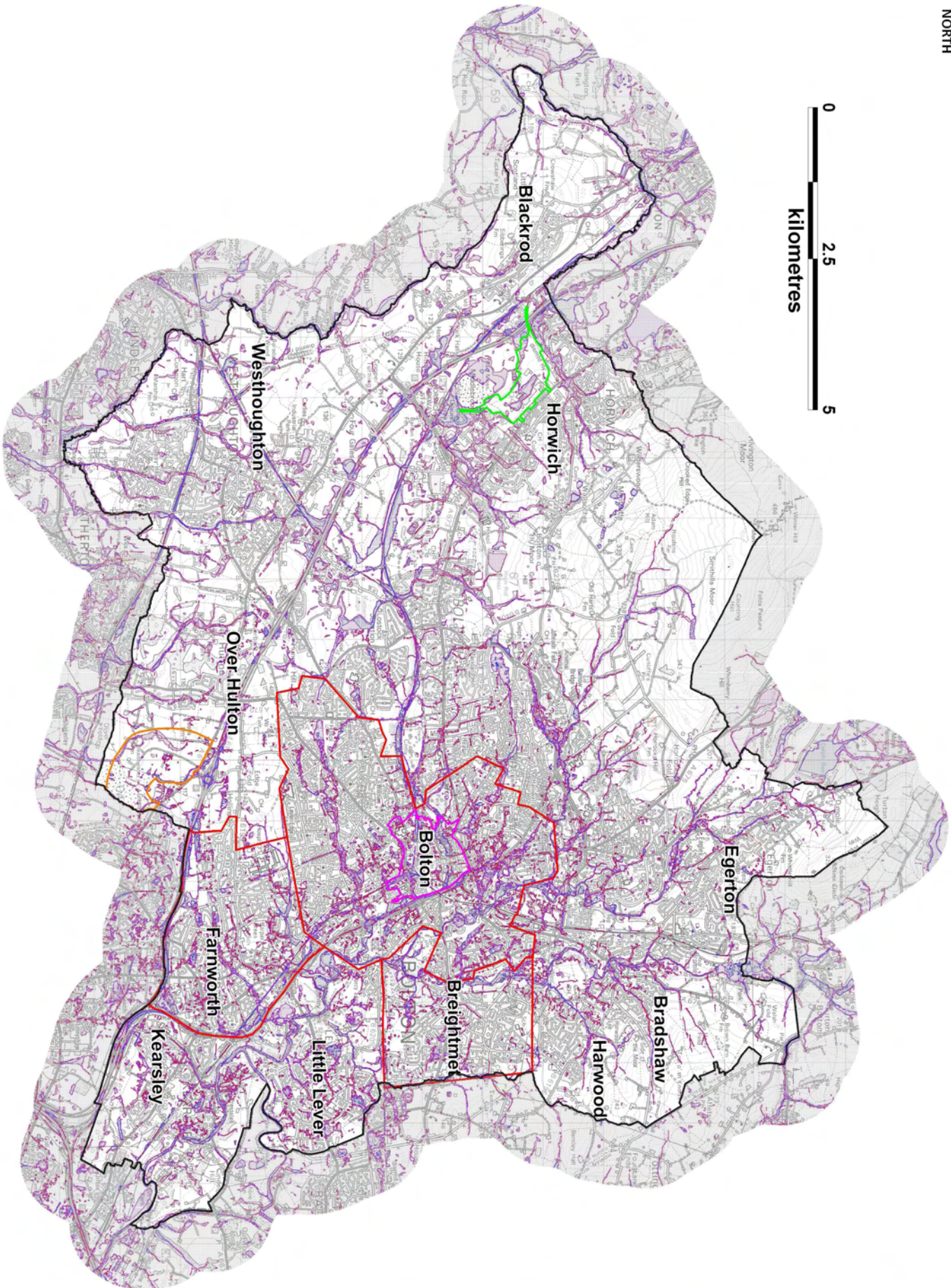
DRAFT FOR CONSULTATION

Copyright © Bolton Council 2009. All Rights Reserved. © Bolton Council 2009.

REPORT CHECKS	DATE	BY
AS SHOWN	24.11.09	AS SHOWN



Scott Wilson
54 Princess Street
Mantchester
M1 6HS



BOLTON LEVEL 1 UPDATE
& LEVEL 2 STRATEGIC
FLOOD RISK ASSESSMENT

BOLTON OVERVIEW -
AREAS SUSCEPTIBLE TO
SURFACE WATER FLOODING

- Bolton District Boundary
- Bolton Town Centre Key Development Opportunity Area
- Renewal Areas - Inner Bolton, Farrworth & Breightmet
- Loco Works, Horwich Core Strategy Area
- Culture Development Site
- Areas susceptible to Surface Water Flooding
- More Likely
- Intermediate Risk
- Less Likely
- River Centralines

Legend

Symbol	Description
	Bolton District Boundary
	Bolton Town Centre Key Development Opportunity Area
	Renewal Areas - Inner Bolton, Farrworth & Breightmet
	Loco Works, Horwich Core Strategy Area
	Culture Development Site
	Areas susceptible to Surface Water Flooding
	More Likely
	Intermediate Risk
	Less Likely
	River Centralines

Bolton Council

Scott Wilson
54 Princess Street
Mantchester
M1 6HS

Scott Wilson

Project Number	D125481	Client	AS SHOWN
Project Name	2009 T-CHECK	Organiser	AR
Issue Date	24.11.09	Version	1

DRAFT FOR CONSULTATION