

**THE BOROUGH COUNCIL OF BOLTON
ADOPTION OF ROADS INTO THE PUBLIC HIGHWAY
HIGHWAYS ACT 1980 - SECTION 38**

DECLARATION

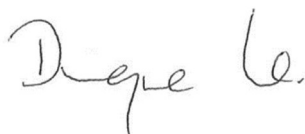
I, Dwayne Lowe, Assistant Director of Highways & Planning, pursuant to the powers delegated to me for and on behalf of the Borough Council of Bolton, hereby declare the street(s) named below, having been made up to the appropriate standard, to be highway(s) maintainable at the public expense and to be recorded as such in the register of adopted streets.

This adoption is pursuant to Section 38 of the Highways Act 1980.

SCHEDULE

<i>Name of Street</i>	<i>Description</i>	<i>Approximate Length</i>
PERSEVERANCE CLOSE, WESTHOUGHTON USRN: 3406667	From its junction with Bolton Road, for an approximate distance of 96 metres in a north-westerly direction to the Industrial Estate access road. From this length of road for an approximate distance of 105 metres in a south-westerly direction and then for an approximate distance of 49 metres in a north-westerly direction to its cul-de-sac end, including the turning heads as shown in the drawing.	250 metres
As shown in drawing number: 311132-AD1		

SIGNED:



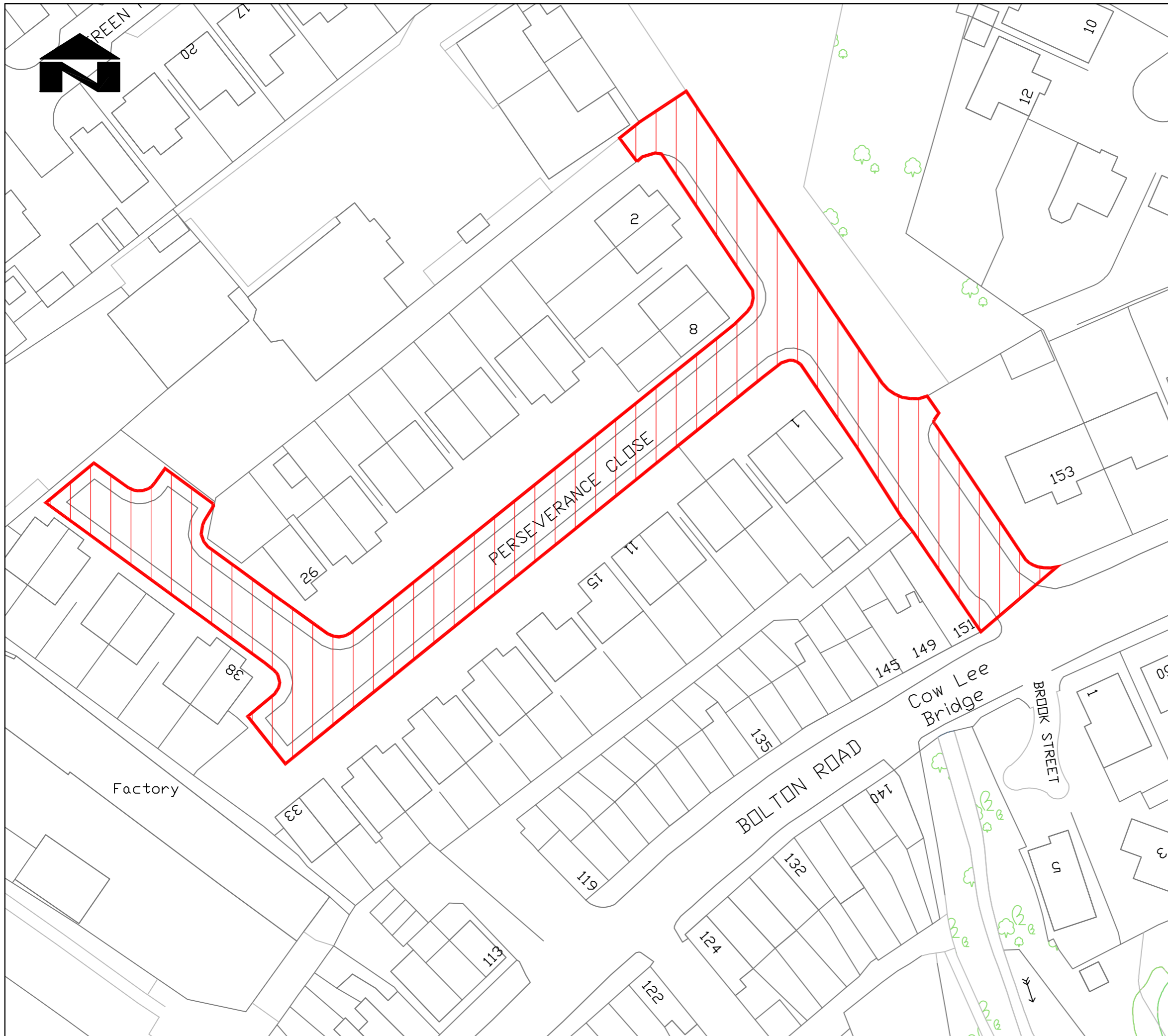
DATE:

19 February 2025

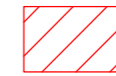
.....
 Dwayne Lowe CEng FCIHT FIHE
 Assistant Director – Highways and Planning

Highways & Engineering Division
 Paderborn House
 Civic Centre
 Bolton BL1 1UA





KEY:



HIGHWAY TO BE ADOPTED

DESIGNED AND PRODUCED BY THE HIGHWAYS AND ENGINEERING SECTION OF THE DIRECTORATE OF PLACE OF BOLTON COUNCIL

ISSUED February 2025

© BOLTON COUNCIL 2025

THIS MAP IS BASED ON ORDNANCE SURVEY MATERIAL WITH THE PERMISSION OF ORDNANCE SURVEY ON BEHALF OF HER MAJESTY'S STATIONERY OFFICE. © CROWN COPYRIGHT. UNAUTHORISED REPRODUCTION INFRINGES CROWN COPYRIGHT AND MAY LEAD TO PROSECUTION OR CIVIL PROCEEDINGS. 100019389/ 2025

Rev.	Amendments	By	Date	Chkd.

Bolton Council HIGHWAYS AND ENGINEERING DIVISION

'KEEPING PEOPLE MOVING SAFELY'

DIRECTORATE OF PLACE

Director: Jon Dyson

PERSEVERANCE CLOSE
WESTHOUGHTON

ADOPTION

Status INFORMATION

Date	FEBRUARY 2025	Drawn-by	S MYKOLAJOWSKI
Scale	NTS	Checked by	S MYKOLAJOWSKI
		Independent check	
Drawing Size	A3	CAD ref.	311132/ADOPTION

Drawing No.	311132-AD1	Revision	
-------------	------------	----------	--

**THE BOROUGH COUNCIL OF BOLTON
ADOPTION OF CULVERTS INTO THE PUBLIC HIGHWAY
HIGHWAYS ACT 1980 - SECTION 38**

DECLARATION

I, Dwayne Lowe, Assistant Director of Highways & Planning, pursuant to the powers delegated to me for and on behalf of the Borough Council of Bolton, hereby declare the culverts(s) named below, having been made up to the appropriate standard, to be maintainable at the public expense and to be recorded as such in the register of adopted culverts.

This adoption is pursuant to Section 38 of the Highways Act 1980.

SCHEDULE

<i>Name/Reference of Culvert</i>	<i>Description</i>
1010 PERSEVERANCE CLOSE CULVERT	1010 Perseverance Close Culvert a) 30.4m long, 1500 x 950 diameter brick culvert. The adoption shall be limited to the extent of highway (Perseverance Close) Accessed via Cow Lee Bridge As shown on drawing number 311132-ADC1

The adoption shall be limited to those elements listed above and shall therefore exclude any river training walls, gabion baskets or drainage outfalls that may be present on the adjacent watercourse.

SIGNED:



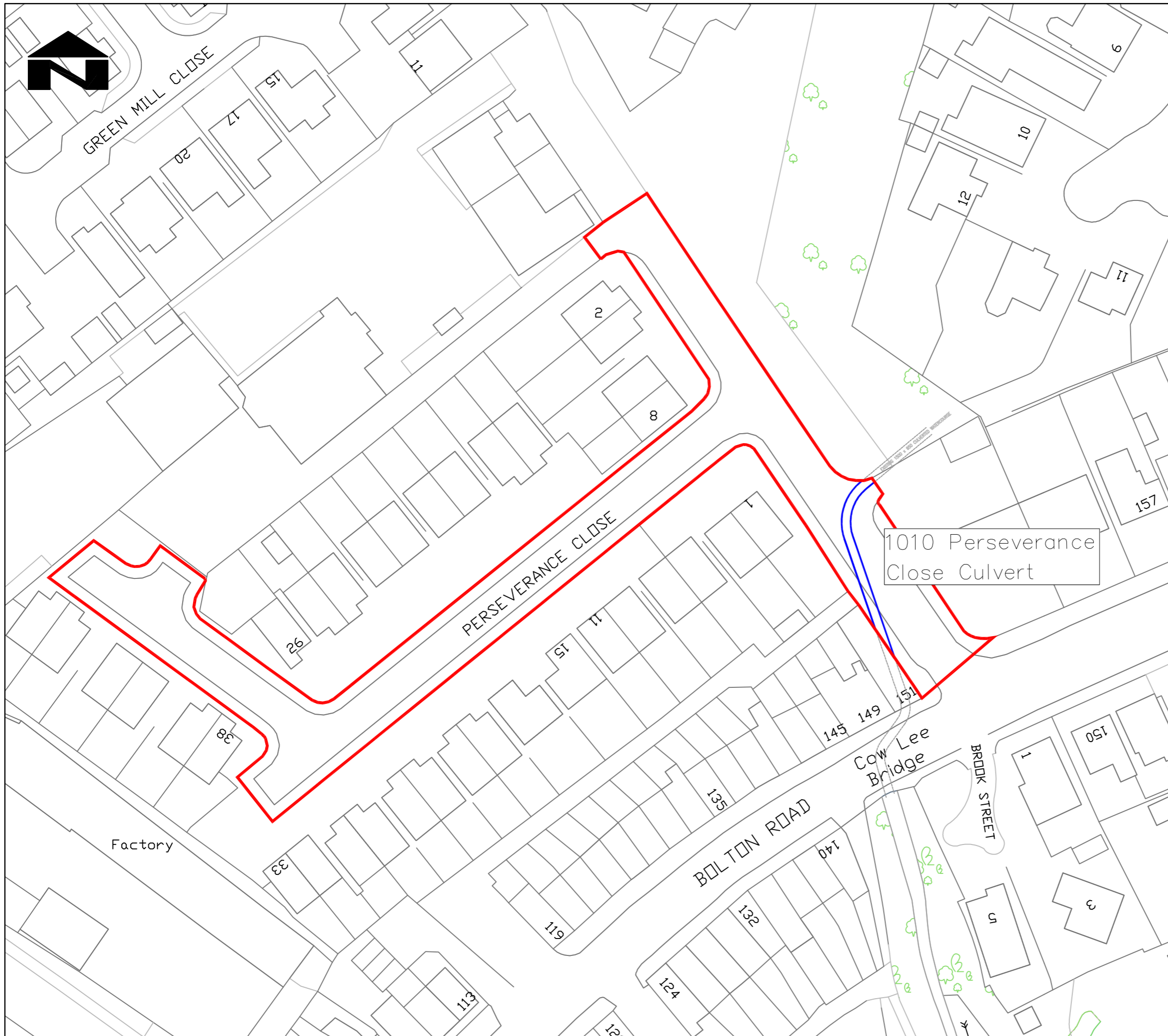
DATE:

19 February 2025

.....
Dwayne Lowe CEng FCIHT FIHE
Assistant Director – Highways and Planning

Highways & Engineering Division
Paderborn House
Civic Centre
Bolton BL1 1UA

**Bolton
Council**



KEY:

- 1010 Perseverance Close Culvert
 - a) 30.4m long, 1500 x 950 diameter brick culvert.

The adoption shall be limited to the extent of highway (Perseverance Close)

Accessed via Cow Lee Bridge

DESIGNED AND PRODUCED BY THE HIGHWAYS AND ENGINEERING SECTION OF THE DIRECTORATE OF PLACE OF BOLTON COUNCIL

ISSUED February 2025

© BOLTON COUNCIL 2025

THIS MAP IS BASED ON ORDNANCE SURVEY MATERIAL WITH THE PERMISSION OF ORDNANCE SURVEY ON BEHALF OF HER MAJESTY'S STATIONERY OFFICE. © CROWN COPYRIGHT. UNAUTHORISED REPRODUCTION INFRINGES CROWN COPYRIGHT AND MAY LEAD TO PROSECUTION OR CIVIL PROCEEDINGS. 100019389/ 2025

Rev.	Amendments	By	Date	Chkd.

Bolton Council HIGHWAYS AND ENGINEERING DIVISION

'KEEPING PEOPLE MOVING SAFELY'

DIRECTORATE OF PLACE
Director: Jon Dyson

WESTHOUGHTON

ADOPTION OF 1010 PERSEVERANCE CLOSE CULVERT

Status INFORMATION			
Date	FEBRUARY 2025	Drawn-by	S MYKOLAJOWSKI
Scale	NTS	Checked by	M ROWLES
		Independent check	
Drawing Size	A3	CAD ref.311132/Bolton Road Perseverance Mill/Culvert Adoption	
Drawing No.	311132-ADC1	Revision	