

ROAD TRAFFIC REGULATION ACT 1984 SECTION 14(1)

**THE BOLTON (PUBLIC FOOTPATH WESTHOUGHTON 092)
(TEMPORARY CLOSURE) (NO.94) ORDER 2024**

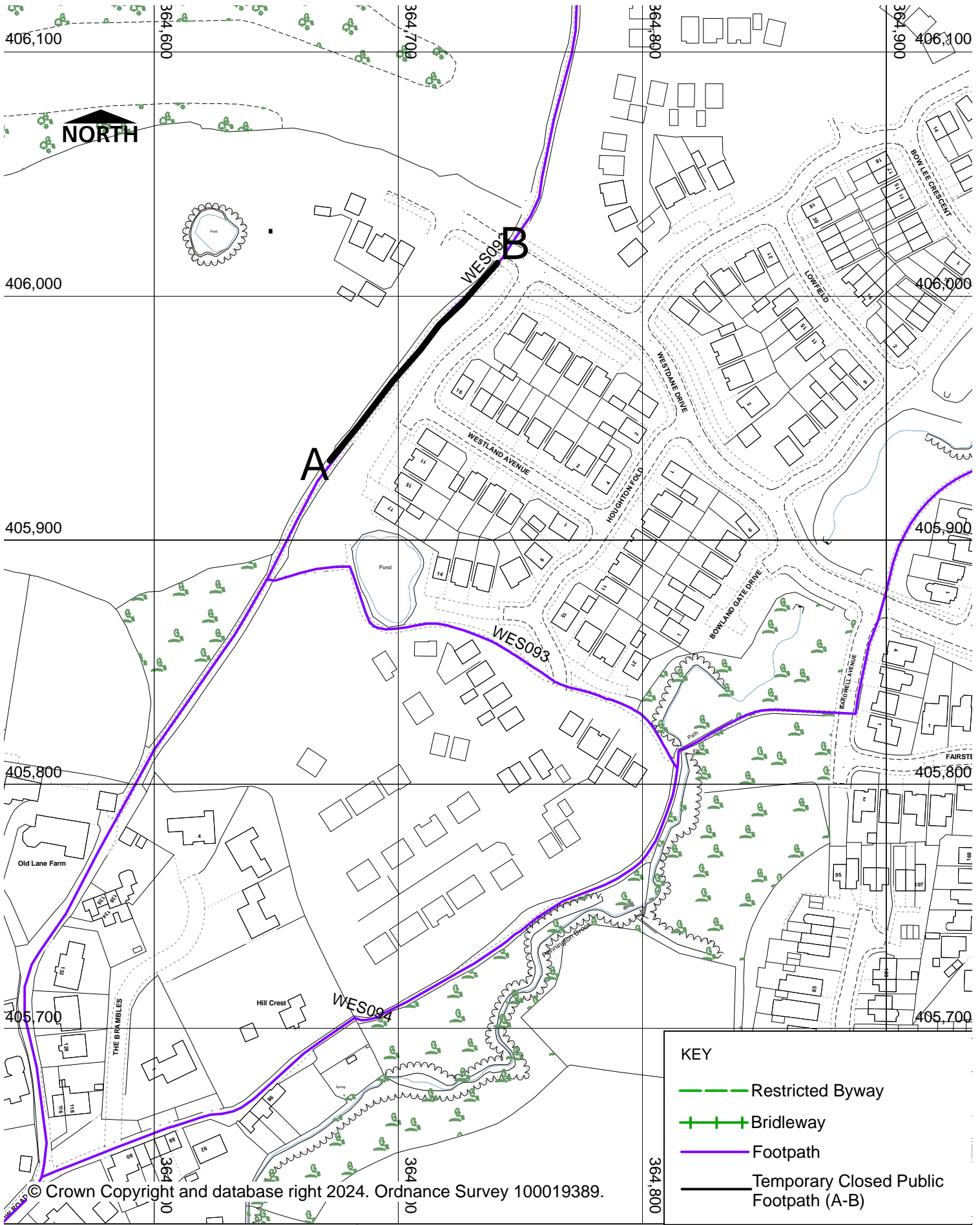
The Borough Council of Bolton has made an Order, which will be operative from 16th October 2024, which will prohibit all pedestrian traffic from using Public Footpath Westhoughton 092 commencing from point A at grid reference SD 64672 05930 in a generally northeast by north, direction to point B Westdane Drive at grid reference SD 64741 06014: as shown by the bold black line on the Order plan 1Wes092 over a total distance of approximately 108 metres.

An alternative route is available commencing from Westdane Drive point B at grid reference SD 64741 06014 then Houghton Fold.

The Order is necessary to facilitate excavation and drainage works and will continue for a period of 5 weeks or until the works are completed whichever is the earlier.

Dated: 24th October 2024

J Dyson, Director of Place, Town Hall, Bolton, BL1 1RU
LS/RST/094903



© Crown Copyright and database right 2024. Ordnance Survey 100019389.



HIGHWAY AND ENGINEERING
DIVISION
PUBLIC RIGHTS OF WAY

THE BOROUGH COUNCIL OF BOLTON
Public Footpath Westthoughton 092
Temporary Closure Order Section 14 RTA 1984

DIRECTORATE OF PLACE

Jon Dyson
Director of Place
Town Hall, Victoria Square, Bolton, BL1 1RU

Date	Scale	Drawn	Drg. No.
04/10/2024	1:2000	AS	1Wes092