

ROAD TRAFFIC REGULATION ACT 1984 SECTION 14(1)

**THE BOLTON (PUBLIC FOOTPATH LITTLE LEVER 060)
(TEMPORARY CLOSURE) (NO.90) ORDER 2024**

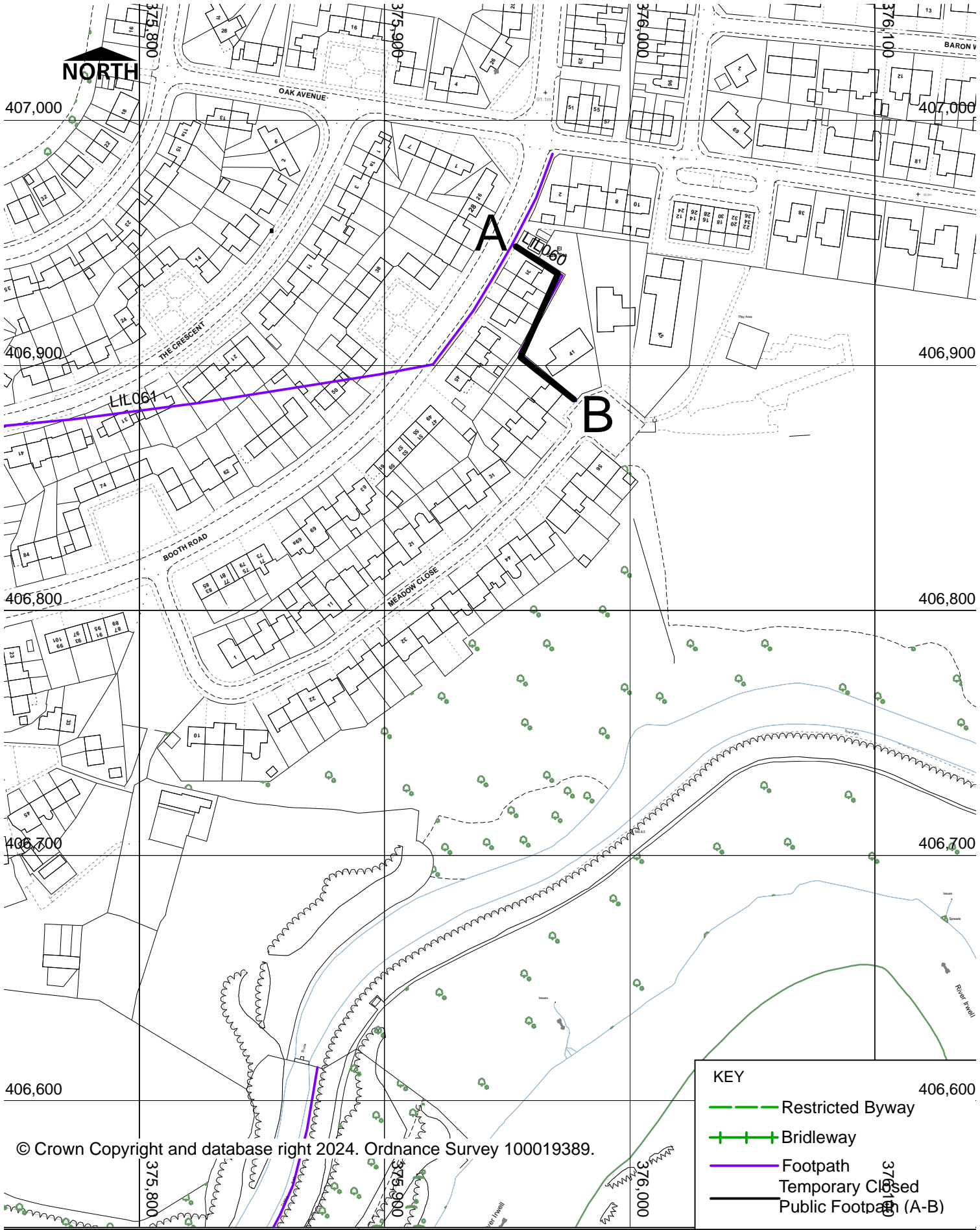
The Borough Council of Bolton has made an Order, which will be operative from 22 July 2024, which will prohibit all pedestrian traffic from using Public Footpath Little Lever 060 commencing from Booth Road point A at grid reference SD 75950 06949 in a generally east southeast then southwest by south then southeast direction to point B Meadow Close at grid reference SD 75976 06887: as shown by the bold black line on the Order plan 1LiL060 over a total distance of approximately 89 metres.

An alternative route will be available commencing from Booth Road point A at grid reference SD 75950 06949 then Meadow Close point B at grid reference SD 75976 06887.

The Order is necessary to facilitate excavation works and will continue for a period of 5 days, or until the works are completed, whichever is the earlier.

Dated: 22 July 2024

J Dyson, Director of Place, Town Hall, Bolton, BL1 1RU
LS/RST/093797



© Crown Copyright and database right 2024. Ordnance Survey 100019389.



**HIGHWAY AND ENGINEERING
DIVISION
PUBLIC RIGHTS OF WAY**

THE BOROUGH COUNCIL OF BOLTON
Public Footpath Little Lever 060
Temporary Closure Order Section 14 RTA 1984

DIRECTORATE OF PLACE

Jon Dyson
Director of Place
Town Hall, Victoria Square, Bolton, BL1 1RU

Date
11/06/2024

Scale
1:2000

Drawn
AS

Drg. No.
1LiL060