

STREETS FOR ALL

MARKET STREET, FARNWORTH; PHASE 2



Thank you for taking the time to visit this consultation page on the proposed changes to Farnworth Town Centre. This is a valuable opportunity for us to get insight from you and present the updates from our previous consultation on Market Street and Coucill Square.

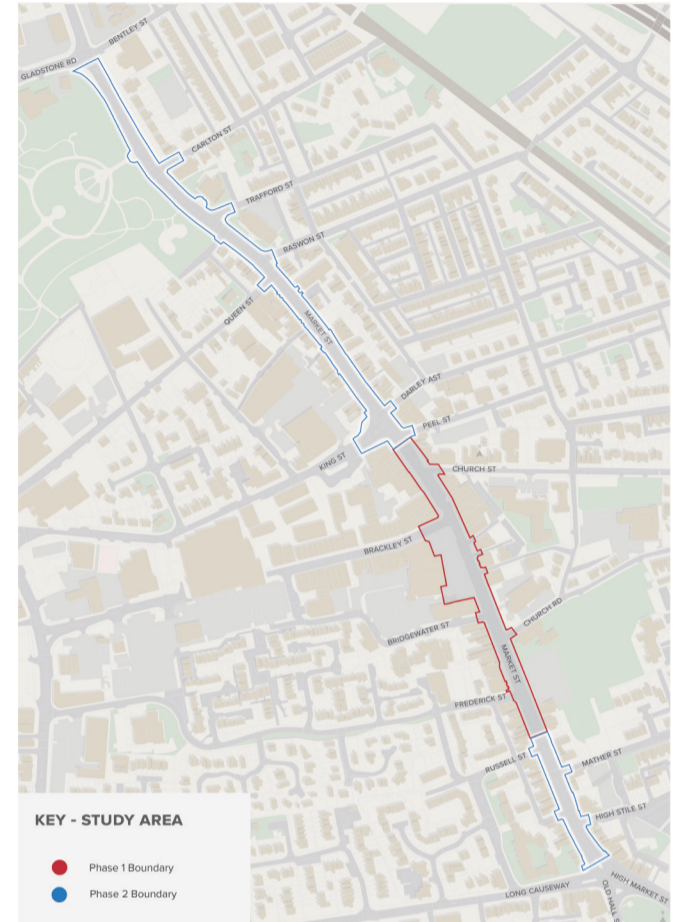
1. Who are we and what are we doing?

Bolton Council was awarded funding from the Future High Street Fund (FHSF) in early 2021, to deliver a street transformation on Market Street.

In June 2022 we consulted on Phase 1 of the scheme which spans between King Street and Frederick Street, including Coucill Square - the public space at the front of Home Bargains.

We are now consulting on Phase 2 of the Market Street scheme, which spans between Gladstone Road and King Street in the North and Frederick Street to Long Causeway in the South (see map). Phase 2 will be funded by the City Region Sustainable Transport Settlements (CRSTS) funding.

We are looking to use the funding to improve accessibility to and within the town centre, enhance people's experience and support local businesses.



Streets for All is Greater Manchester's approach to create thriving places that support local communities and businesses. It is a people-centred approach to street planning, design and network management with an emphasis on reducing traffic and improving the environment for pedestrians, cyclists and public transport users.

Vision Objectives

Building up from the Streets for All strategy, the key principles for the regeneration of Market Street in Farnworth are:



The **convenience and safety of pedestrians** as the top priority.

Enhance accessibility and inclusivity, supporting the Streets for All approach.



Humanise the street space through **greenery**.

Contribute to climate resilience and improve air quality. Promote sustainability.



Heritage sites as focal points of the street: the Town Hall, the Library and Farnworth Park entrance.
Encourage more accessible design of the space, enhancing active travel.



Support businesses and create a more **successful Market Street**.

Celebrate heritage and improve the setting of valued buildings.



Push through-traffic on to the **A666 bypass** around town.

Reduce the speed and impact of cars and the wide carriageway along the street.



De-clutter and simplify street scene.

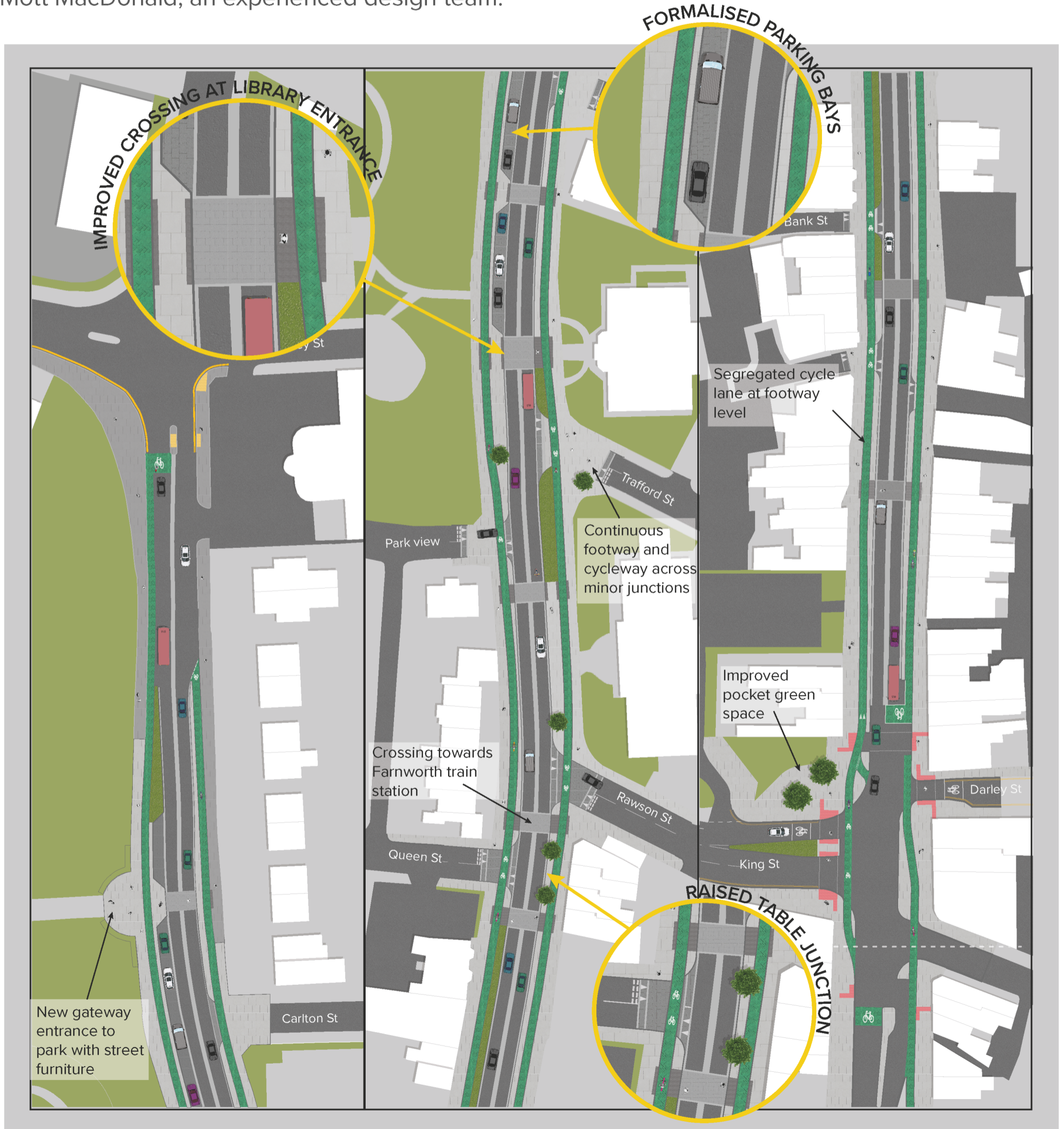
Incorporate spaces for public art. Place-led and contextual.



2. What is the proposed Phase 2 scheme?

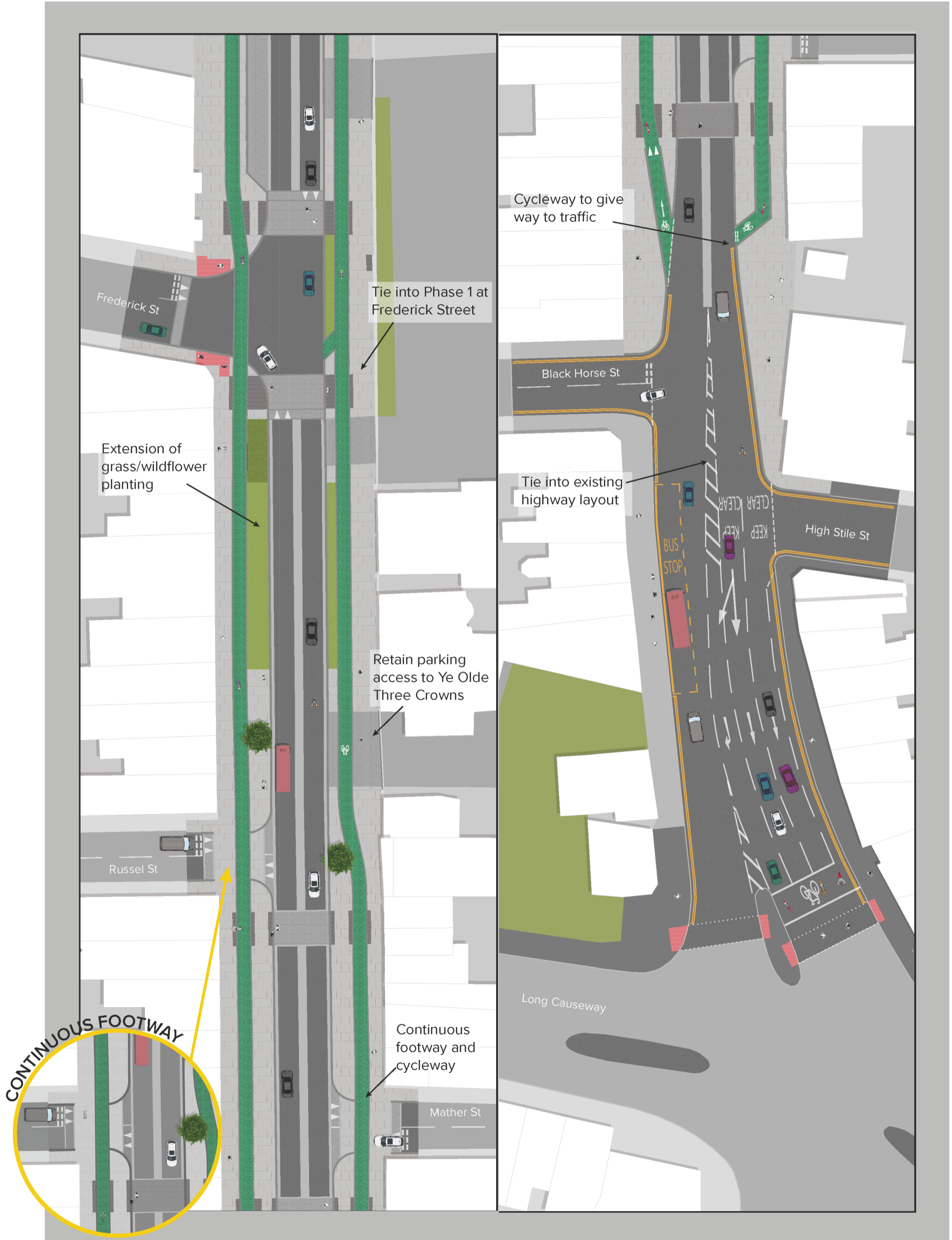
Our proposals aim to create a balanced street that better supports the regeneration of Farnworth. It will be better for people passing through or visiting Farnworth on foot, by bicycle and by public transport, and will connect the town centre with the Phase 1 scheme.

The proposals have been developed by Bolton Council, Transport for Greater Manchester, and Mott MacDonald, an experienced design team.



STREETS FOR ALL

MARKET STREET, FARNWORTH; PHASE 2





3. How will the scheme make a difference?

The scheme will provide:

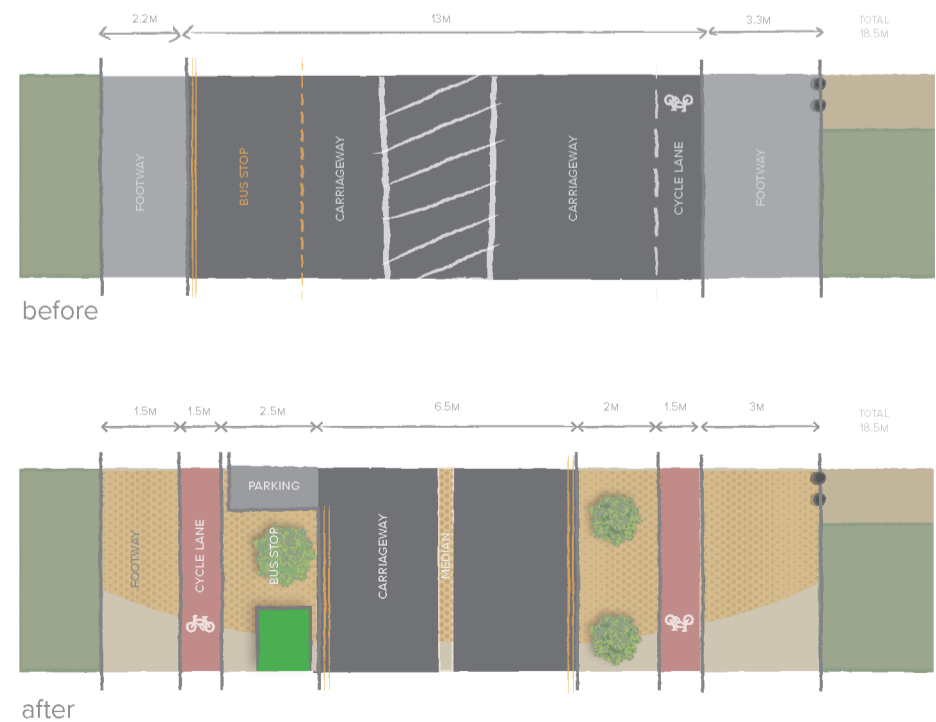
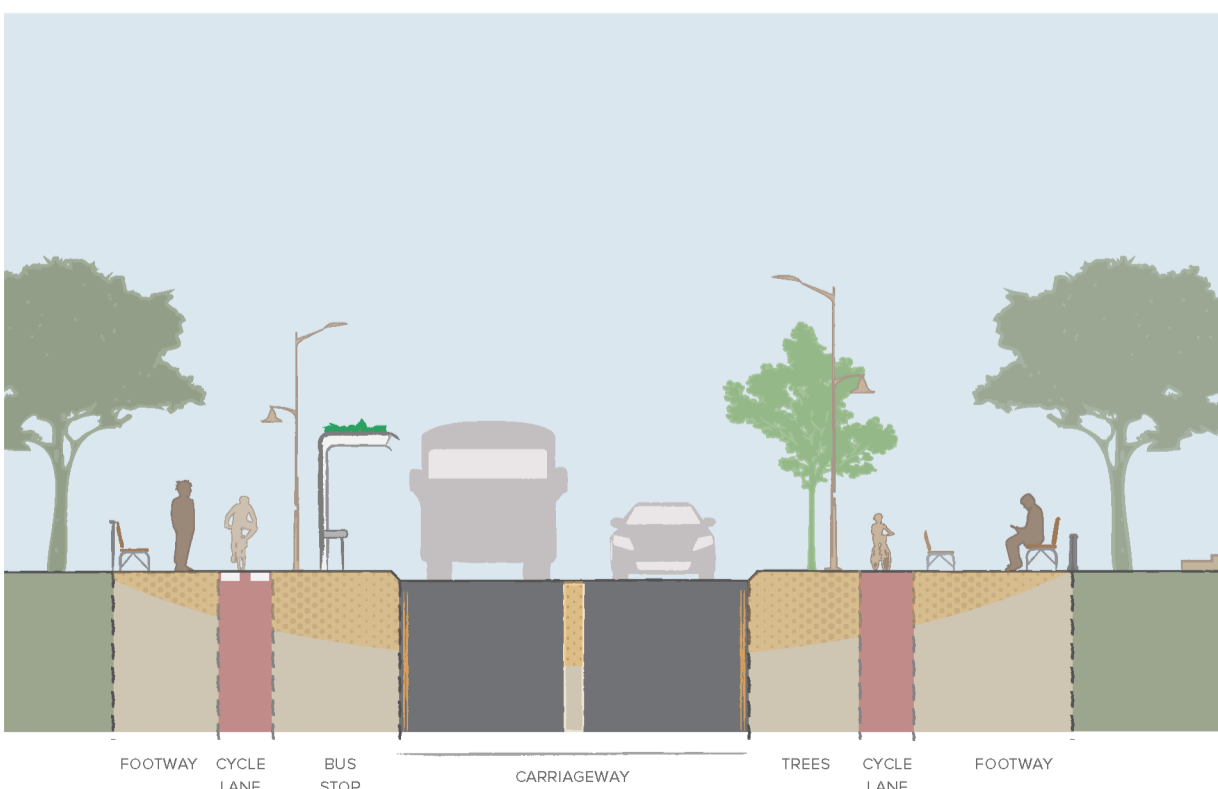
- Improved footways, with smoother surfaces and improved drainage along Market Street, creating an improved environment for pedestrians.
- New pedestrian crossings making it safer to cross the road.
- Continuous footways on side roads giving priority to pedestrians over vehicles.
- Better active travel facilities, including separated cycle lanes along the majority of the route.
- More green features along the street, with new trees and planting.
- New street furniture creating places to stop and rest.

The **Streets for All Check** was developed by Transport for Greater Manchester and is based upon the seven network principles that feature within the GM Transport Strategy 2040. The existing layout scores **29**, with 1 'Critical' issue identified. The proposed layout scores **72**, with 0 'Critical' issues identified.

Network Principle	Existing Layout	Proposed Layout
Green and vibrant streets	22%	50%
Attractive, inclusive walking environment	22%	56%
Safe and convenient cycling environment	18%	57%
Reliable, integrated, accessible public transport	14%	18%
Goods delivered on time	0%	50%
Streets that enable people to drive less	25%	25%
Future-proofed street network	13%	38%

Overall Streets for All Score	29	72
Number of critical issues	1	0

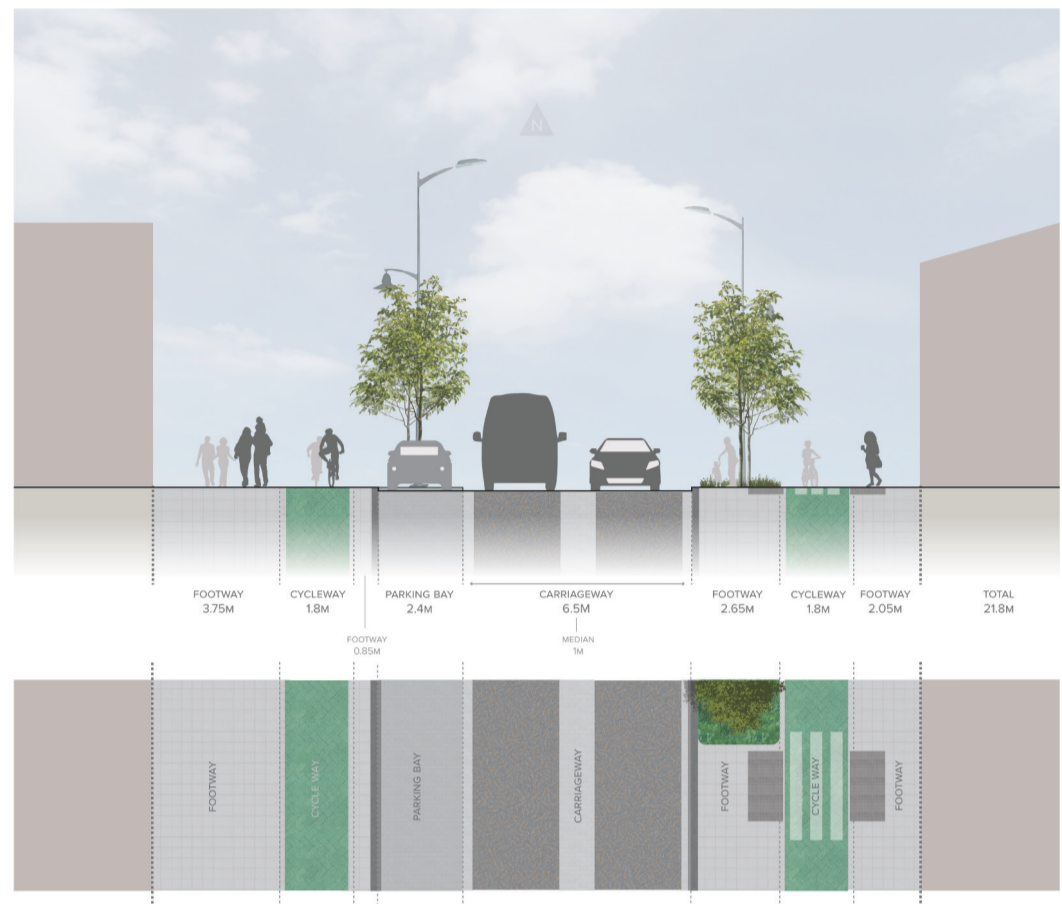
- Existing layout
- Proposed layout





4. What has changed to the Phase 1 scheme since 2022 public consultation?

- Redesign of Coucill Square to provide greener space: two planters are now proposed, with retention of the mature tree in existing planter.
- Signalised crossing (Puffin) to be retained at Coucill Square.
- Parallel crossing to be provided at Frederick Street giving priority to both pedestrians and cyclists.
- Proposed trees relocated from along Market Street to Coucill Square, in order to avoid clashes with utilities and reduce costs.
- Redesign of Home Bargains car park. Car park to remain as existing size, maximising public space at Coucill Square.



5. Next steps

The proposals have been developed after reviewing an extensive list of possible options. These options were subject to a sifting process, with input from local stakeholders. We have now finalised the design concepts and would like to get your feedback.

Market Street will become a green and healthy street supporting business and better movement. Coucill Square will become a new vibrant space for the community.

How to get involved

We encourage you to share your feedback on the Market Street Phase 2 proposals through our online survey. The survey will take approximately 5 minutes to complete, and all responses will be treated confidentially.

We will be reviewing and considering all comments received. The survey will close at **5pm on Monday 16th October 2023.**

Contact email for paper, large format or braille survey: emily.aldridge@mottmac.com

Please access the online survey by typing in the website www.smartsurvey.co.uk/s/XYXB5T