

MAKE YOUR MARK 2022

Results Report



Youth Parliament
MAKING OUR MARK

United Kingdom

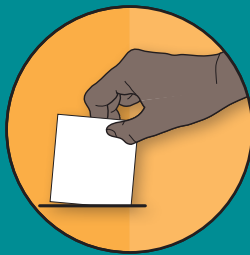
Make Your Mark

Giving a voice
to thousands of
young people
across the UK



2022 RESULTS

**434,492 young
people
casting
a vote**



Over 780

**schools, colleges
and youth groups
registered to
take part in the
consultation**



ISSUES

Health and Wellbeing
93,023

Jobs, Money, Homes and Opportunities
81,068

Education and Learning
77,470

Environment
74,500

Poverty
53,058

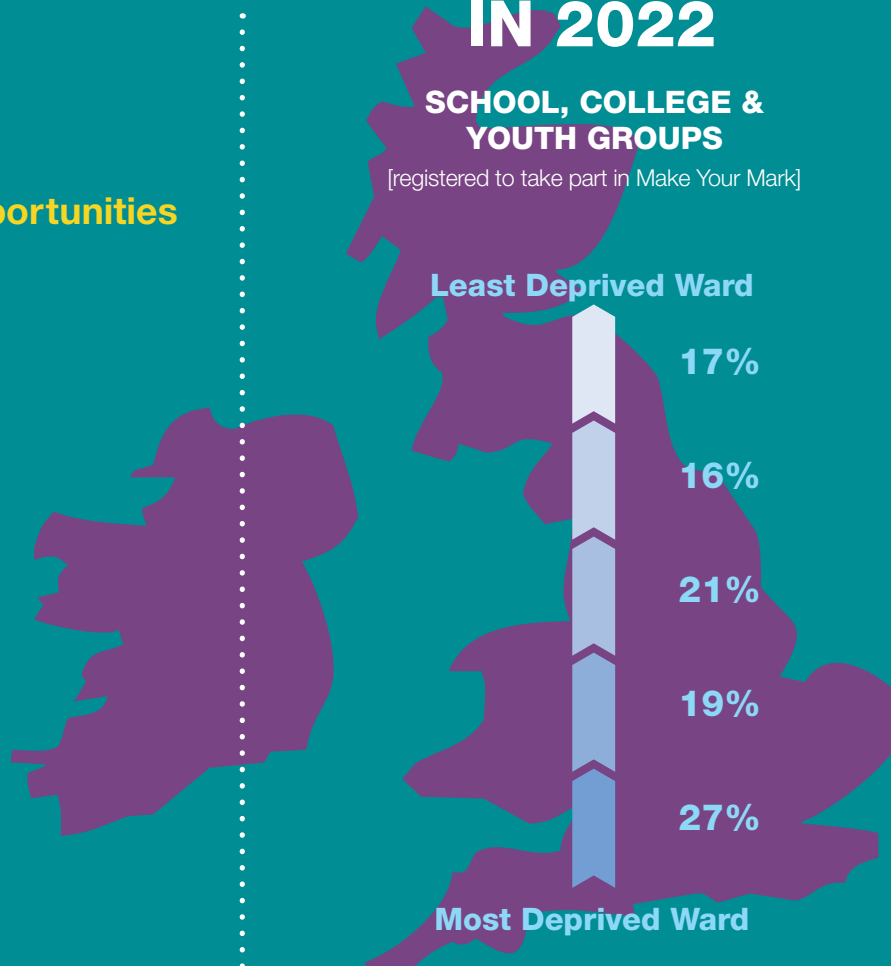
Our Rights and Democracy
28,024

Covid Recovery
27,349

DIVERSITY IN 2022

**SCHOOL, COLLEGE &
YOUTH GROUPS**

[registered to take part in Make Your Mark]



Data: Index of Multiple Deprivation MHCLG, Stats Wales, and NISRA 2019.

RECURRING ISSUES

x6

- Votes at 16
- Curriculum for Life
- Mental Health

x5

- Transport
- Living Wage and Equal/minimum wage

x4

- Work experience/getting ready for work

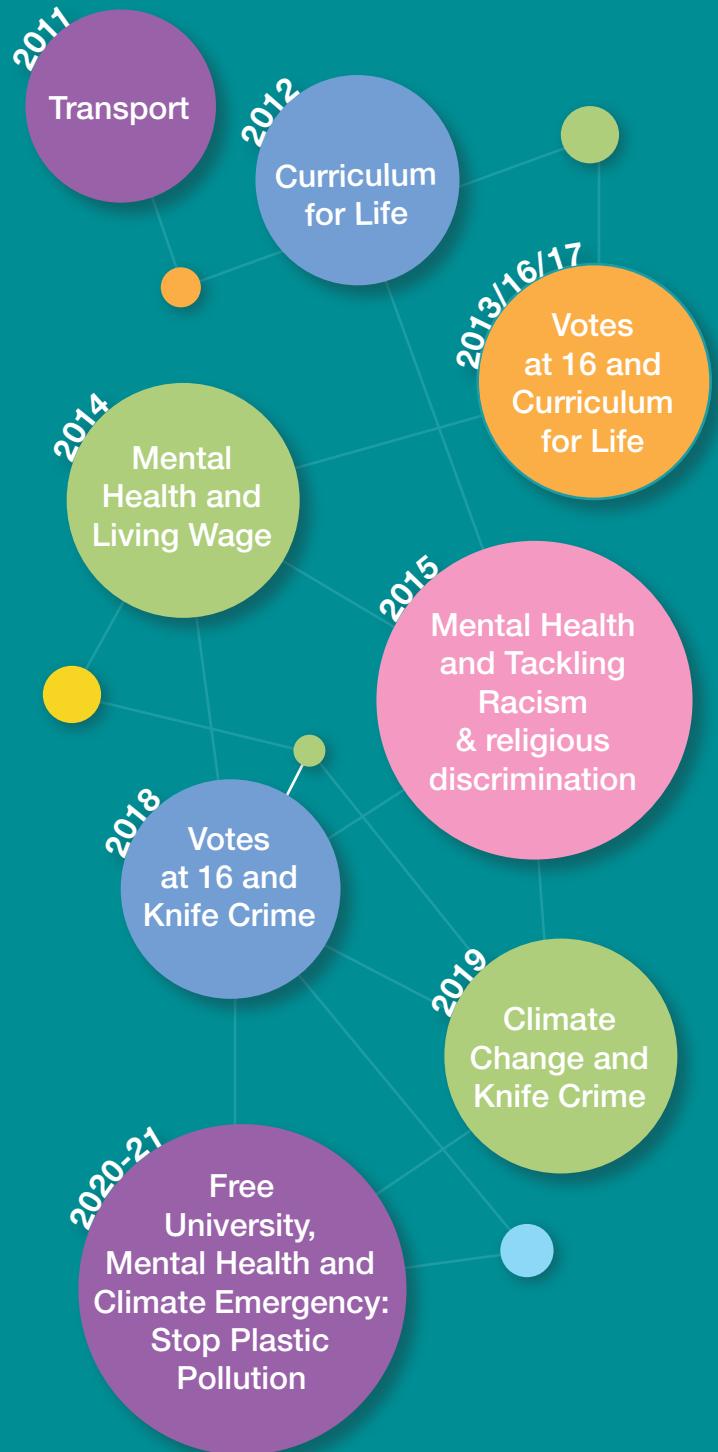
x3

- Tackling Hate Crime/ racism & religious discrimination

x2

- Bullying
- Welcome Refugees
- End Knife Crime
- Climate Change

CAMPAIGNS



Produced by
The British Youth Council
the youth-led charity making
a difference for our future.

Switchboard: 020 4529 5927
Visit: www.byc.org.uk
Follow us on [Twitter](#) and [Facebook](#)

CONTENTS

Introduction 3

Turnout 5

Topics 6

Top Twenty 7

British Forces Overseas Youth Service 9

East Midlands 10

East of England 12

London 14

North East 16

North West 18

Northern Ireland 20

Scotland 22

South East 24

South West 26

Wales 28

West Midlands 30

Yorkshire and Humberside 32

Introduction

2022 has been an exciting year for Make Your Mark. For the first time we made the bold move to combine the UK consultation with Member of Youth Parliament elections in order to streamline the way in which we hear young people’s voices. This approach was a big step and would not have been possible without the ongoing support from dedicated Local Authority workers across the UK.

Despite the changes in way the vote was held, what remains the same in 2022 is our gratitude and appreciation to the young people who took part, the schools, colleges and youth groups who supported the process and our funders The Paul Hamlyn Foundation, Children in Need and The National Lottery Community Fund. Finally, we would like to thank our partners who have helped facilitate the consultation; the Education and Engagement Team at UK Parliament and the Centre For Youth Impact.

We would also like to thank our current Members of Youth Parliament and Steering Group who have guided this new process from start to finish seamlessly. Without their dedication and tenacity, Make Your Mark would not be possible.

UK Results

Year	No. of Votes	Turnout
2022	434,492	7.06%
2020 UK/ Devolved Topics	185,677	3.13%
Local Topics	180,786	3.05%
2019 UK Topics	838,288	13.93%
Devolved Topics	840,322	14.04%
2018	1,106,788	18.80%
2017	954,766	16.20%
2016	978,216	16.60%
2015	969,992	16.46%
2014	876,488	14.88%
2013	478,386	8.12%
2012	253,637	4.31%
2011	65,532	1.10%

YOUTH POPULATION CHANGES

For the 2022 consultation and Member of Youth Parliament Elections turnouts are based on the most recent data published by the Official of National Statistics which was published at the end of June 2021.

With the update in the 11-18 year old population, the removal of UK wide and Devolved Topics and a new combined approach to voting (Make Your Mark and Member of Youth Parliament Elections) in many Local Authorities, we propose that the 2022 data be used as a benchmark. The amalgamation of new factors means it would not be fair to compare figures in this report against previous years. Past turnouts can be found on our website at:

www.byc.org.uk/uk/uk-youth-parliament/make-your-mark

Make Your Mark usually selects the UK/Devolved topics Members of Youth Parliament debate in the House of Commons Chamber, where they also vote on the future campaigns. Due to the ongoing challenges of the global pandemic our 2020 - 22 cohort of Members of Youth Parliament were unable to meet and debate in the House of Commons. Therefore the process and purpose of Make Your Mark has been adapted to avoid potential challenges in the upcoming years.

Our Steering Group and Members of Youth Parliament worked together, using the 2020 manifesto to vote on the themes which appeared on the 2022 ballot paper.

The idea to have broader themes for Make Your Mark 2022 will mean newly elected Members of Youth Parliament will be able to conduct localised research to better understand how an issue impacts upon the communities and people they stand to represent.

The broad themes also removed the need to have UK wide/Devolved Topic breakdown from the ballot. We hope this new approach will mean young people can have real ownership of the issues they choose to tackle.

The Centre for Youth Impact has supported the delivery of Make Your Mark 2022 as part of a wider project on *Maximising Young People's Voice and Power*, collaboratively funded by Paul Hamlyn Foundation, The National Lottery Community Fund and BBC Children in Need. This project seeks to generate data and insight into what types of youth voice activity are happening across the UK, and who engages in this activity. This project will culminate in an interactive heatmap to be published in September 2022, which will show levels of youth voice activity by local authority, and will incorporate the vote and demographic data collected in Make Your Mark 2022.

English Regions, Northern Ireland, Scotland, Wales and British Overseas Armed Forces Youth Service turnout

Region/Nation	11-18 Population 2018	Total Votes	Turnout %
British Forces Overseas		24	
East Midlands	442,917	18,922	4.27%
East of England	582,214	54,662	9.39%
London	824,122	31,762	3.85%
North East	236,125	31,430	13.31%
North West	680,687	87,869	12.91%
Northern Ireland	191,993	97	0.05%
Scotland	460,138	4,993	1.09%
South East	874,040	72,362	8.28%
South West	495,046	35,897	7.25%
Wales	282,581	10,866	3.85%
West Midlands	568,962	27,895	4.90%
Yorkshire and Humber	513,794	55,042	10.71%
Postcode not matched		2,671	
	6,152,619	434,492	7.06%

*As part of the voting page on the website, young people were asked to provide a full postcode. This was then used to allocate their vote to the relevant Local Authority. Where only part or an inaccurate postcode e.g. an O was used in place of a 0 (zero), it has not been possible to allocate these votes to the Local Authority. In order for these votes to still count, they have been grouped together.

English Regions, Northern Ireland, Scotland, Wales and British Overseas Armed Forces Youth Service topics

	East Midlands	East of England	London	North East	North West	Northern Ireland	Scotland	South East	South West	Wales	West Midlands	Yorkshire and Humber	Online: Postcode partially completed/correct	British Forces Overseas	Total
Covid Recovery	3327	3131	1855	1694	5187	9	701	2948	1999	871	1640	3,824	161	2	27,349
Education and Learning	3750	9059	6040	5054	16352	19	659	13240	6824	1876	5071	9,034	491	1	77,470
Environment	3706	9712	4699	5279	13305	19	717	14085	7007	1654	4953	8,855	505	4	74,500
Health and Wellbeing	3138	12518	7591	7344	17087	16	747	14579	8262	3115	5828	12,267	521	10	93,023
Jobs, Money, Homes and Opportunities	2486	10449	5324	6396	16847	17	696	14322	4949	1848	5570	11,629	532	3	81,068
Our Rights and Democracy	971	3257	2280	1635	6711	11	705	4610	2671	494	1569	2,940	168	2	28,024
Poverty	1544	6536	3973	4028	12380	6	768	8578	4185	1008	3264	6,493	293	2	53,058
Total Votes:	18,922	54,662	31,762	31,430	87,869	97	4,993	72,362	35,897	10,866	27,895	55,042	2,671	24	434,492

Top 20 Areas (based on percentage turnout)

Position	Region/Nation	Local Authority/ Constituency	11-18 year old population	Total Votes	Turnout %
1	East Midlands	Rutland	4,134	1,930	46.69%
2	East of England	Southend-on-Sea, City of	16,918	7,136	42.18%
3	North West	Oldham	25,940	10,888	41.97%
4	West Midlands	Wolverhampton	25,808	10,146	39.31%
5	South West	Plymouth	22,735	8,701	38.27%
6	Wales	Ceredigion	5,796	2,160	37.27%
7	Yorkshire and Humberside	Barnsley	22,044	7,758	35.19%
8	North West	Trafford	25,335	8,814	34.79%
9	North East	Darlington	10,173	3,477	34.18%
10	North East	Redcar and Cleveland	12,166	3,958	32.53%
11	North West	Blackburn with Darwen	17,116	5,027	29.37%
12	South East	Medway	27,598	7,988	28.94%
13	Yorkshire and Humberside	Doncaster	29,261	8,466	28.93%
14	South East	Southampton	21,017	6,080	28.93%
15	North East	South Tyneside	13,169	3,682	27.96%
16	North West	Bolton	28,987	8,090	27.91%
17	North West	Tameside	21,220	5,917	27.88%
18	West Midlands	Telford and Wrekin	18,085	4,855	26.85%
19	North East	Hartlepool	8,932	2,358	26.40%
20	South East	Bracknell Forest	13,076	3,441	26.32%

Top 20 areas based on number of votes

Position	Region/Nation	Local Authority/ Constituency	Total Votes
1	East of England	Essex	20,218
2	South East	Hampshire	17,385
3	North West	Lancashire	16,359
4	East of England	Norfolk	11,659
5	South East	West Sussex	11,212
6	North West	Oldham	10,888
7	West Midlands	Wolverhampton	10,146
8	South East	East Sussex	9,565
9	North West	Trafford	8,814
10	South West	Plymouth	8,701
11	Yorkshire and Humberside	Doncaster	8,466
12	North West	Bolton	8,090
13	South East	Medway	7,988
14	Yorkshire and Humberside	Barnsley	7,758
15	London	Bromley	7,390
16	East Midlands	Nottinghamshire	7,371
17	East of England	Southend-on-Sea	7,136
18	Yorkshire and Humberside	Sheffield	6,968
19	North West	Manchester	6,729
20	South West	Dorset	6,474

British Forces Overseas Youth Service & Online: Postcode partially completed/correct

		Covid Recovery	Education and Learning	Environment	Health and Wellbeing	Jobs, Money, Homes and Opportunities	Our Rights and Democracy	Poverty	Total Vote
British Forces Overseas	Various Locations	2	1	4	10	3	2	2	24
Online	Postcode unmatched	161	491	505	521	532	168	293	2,671

*As part of the voting page young people were asked to provide a full postcode. Using a UK Government postcode database. This was then used to allocate their vote to the relevant Local Authority. Where only a part, or an inaccurate postcode was provided eg. an O was used in place of a 0 (zero), it has not been possible to allocate these votes to the Local Authority. In order for these votes to still count, they have been grouped together.

East Midlands Turnout

Local Council	Population age 11-18	Total Vote	Turnout %
Derby	25,922	2	0.0%
Derbyshire	69,490	5,038	7.2%
Leicester	35,449	1,291	3.6%
Leicestershire	64,897	2,907	4.5%
Lincolnshire	64,710	350	0.5%
North Northamptonshire	34,851	17	0.0%
Nottingham	30,078	11	0.0%
Nottinghamshire	74,087	7,371	9.9%
Rutland	4,134	1,930	46.7%
West Northamptonshire	39,299	5	0.0%

East Midlands

	Covid Recovery	Education and Learning	Environment	Health and Wellbeing	Jobs, Money, Homes and Opportunities	Our Rights and Democracy	Poverty	Total Vote
Derby	0	1	0	1	0	0	0	2
Derbyshire	222	793	968	1,240	1,058	268	489	5,038
Leicester	70	292	167	266	248	85	163	1,291
Leicestershire	129	616	447	698	482	128	407	2,907
Lincolnshire	10	67	71	127	53	11	11	350
North Northamptonshire	1	0	5	2	3	1	5	17
Nottingham	0	4	2	1	1	1	2	11
Nottinghamshire	2,816	1,608	1,602	415	335	317	278	7,371
Rutland	79	368	442	388	305	159	189	1,930
West Northamptonshire	0	1	2	0	1	1	0	5
TOTALS	3,327	3,750	3,706	3,138	2,486	971	1,544	18,922

East of England Turnout

Local Council	Population age 11-18	Total Vote	Turnout %
Bedford	17,447	4,278	24.52%
Cambridgeshire	60,104	5	0.01%
Central Bedfordshire	26,951	2,128	7.90%
Essex	137,144	20,218	14.74%
Hertfordshire	117,979	449	0.38%
Luton	22,937	2	0.01%
Norfolk	76,103	11,659	15.32%
Peterborough	20,215	5,127	25.36%
Southend-on-Sea, City of	16,918	7,136	42.18%
Suffolk	68,201	3,281	4.81%
Thurrock	18,215	379	2.08%

East of England

	Covid Recovery	Education and Learning	Environment	Health and Wellbeing	Jobs, Money, Homes and Opportunities	Our Rights and Democracy	Poverty	Total Vote
Bedford	165	838	736	938	693	278	630	4,278
Cambridgeshire	0	3	0	0	0	2	0	5
Central Bedfordshire	261	179	623	506	150	198	211	2,128
Essex	1,490	2,765	3,267	4,307	4,557	1,362	2,470	20,218
Hertfordshire	16	76	87	135	49	29	57	449
Luton	0	0	1	0	0	1	0	2
Norfolk	519	2,183	2,154	2,816	2,293	623	1,071	11,659
Peterborough	301	1,043	898	1,073	980	269	563	5,127
Southend-on-Sea, City of	237	1,508	1,131	1,742	1,268	327	923	7,136
Suffolk	124	394	748	939	384	154	538	3,281
Thurrock	18	70	67	62	75	14	73	379
TOTALS	3,131	9,059	9,712	12,518	10,449	3,257	6,536	54,662

London Turnout

Local Council	Population age 11-18	Total Vote	Turnout %
Barking and Dagenham	25,128	79	0.31%
Barnet	39,692	8	0.02%
Bexley	24,610	14	0.06%
Brent	30,573	994	3.25%
Bromley	31,589	7,390	23.39%
Camden	23,414	3	0.01%
City of London	700	0	0.00%
Croydon	39,956	3	0.01%
Ealing	33,059	19	0.06%
Enfield	35,634	2	0.01%
Greenwich	26,948	49	0.18%
Hackney	24,867	4	0.02%
Hammersmith and Fulham	14,385	4	0.03%
Haringey	24,463	3	0.01%
Harrow	24,428	4	0.02%
Havering	24,274	940	3.87%
Hillingdon	29,953	3,191	10.65%
Hounslow	25,381	6,346	25.00%
Islington	17,500	3	0.02%
Kensington and Chelsea	11,973	4	0.03%
Kingston upon Thames	16,707	1,152	6.90%
Lambeth	25,171	3	0.01%
Lewisham	26,296	2	0.01%
Merton	18,123	54	0.30%
Newham	33,200	6	0.02%
Redbridge	32,125	5,433	16.91%
Richmond upon Thames	19,278	3,577	18.55%
Southwark	25,523	6	0.02%
Sutton	20,470	947	4.63%
Tower Hamlets	29,366	2	0.01%
Waltham Forest	25,327	2	0.01%
Wandsworth	22,876	13	0.06%
Westminster	21,133	1,505	7.12%

London

	Covid Recovery	Education and Learning	Environment	Health and Wellbeing	Jobs, Money, Homes and Opportunities	Our Rights and Democracy	Poverty	Total Vote
Barking and Dagenham	4	18	6	24	13	10	4	79
Barnet	0	1	2	4	1	-	-	8
Bexley	0	4	3	1	5	0	1	14
Brent	53	219	190	190	128	149	65	994
Bromley	189	908	1,208	3,476	339	584	686	7,390
Camden	0	-	-	1	2	-	-	3
City of London	0							-
Croydon	0	0	1	1	0	1	0	3
Ealing	1	5	3	6	1	1	2	19
Enfield	0	-	1	-	1	-	-	2
Greenwich	3	11	5	6	14	4	6	49
Hackney	1	1	0	1	0	0	1	4
Hammersmith and Fulham	0	1	-	1	-	-	2	4
Haringey	0	-	1	1	1	-	-	3
Harrow	0	3	-	1	-	-	-	4
Havering	24	233	85	224	209	48	117	940
Hillingdon	264	651	530	532	544	268	402	3,191
Hounslow	304	1,349	885	1,097	1,445	378	888	6,346
Islington	0	2	-	-	-	1	-	3
Kensington and Chelsea	0	1	1	-	1	1	-	4
Kingston upon Thames	46	230	221	262	184	63	146	1,152
Lambeth	0	0	0	2	1	0	0	3
Lewisham	0	-	1	1	-	-	-	2
Merton	5	12	10	5	5	8	9	54
Newham	1	1	-	1	2	1	-	6
Redbridge	220	1,530	571	818	1,321	279	694	5,433
Richmond upon Thames	607	438	529	520	556	254	673	3,577
Southwark	1	-	1	2	-	-	2	6
Sutton	32	157	105	300	175	47	131	947
Tower Hamlets	0	-	-	1	1	-	-	2
Waltham Forest	0	-	-	-	-	1	1	2
Wandsworth	0	2	3	4	3	-	1	13
Westminster	100	263	337	109	372	182	142	1,505
TOTALS	1,855	6,040	4,699	7,591	5,324	2,280	3,973	31,762

North East Turnout

Local Council	Population age 11-18	Total Vote	Turnout %
County Durham	45,589	1,159	2.54%
Darlington	10,173	3,477	34.18%
Gateshead	17,590	12	0.07%
Hartlepool	8,932	2,358	26.40%
Middlesbrough	13,539	2,294	16.94%
Newcastle upon Tyne	25,511	67	0.26%
North Tyneside	18,432	3,903	21.18%
Northumberland	27,374	5,428	19.83%
Redcar and Cleveland	12,166	3,958	32.53%
South Tyneside	13,169	3,682	27.96%
Stockton-on-Tees	19,475	648	3.33%
Sunderland	24,175	4,444	18.38%

North East

	Covid Recovery	Education and Learning	Environment	Health and Wellbeing	Jobs, Money, Homes and Opportunities	Our Rights and Democracy	Poverty	Total Vote
County Durham	91	182	218	297	199	59	113	1,159
Darlington	196	653	623	754	604	188	459	3,477
Gateshead	1	4	-	2	2	1	2	12
Hartlepool	109	305	319	657	487	167	314	2,358
Middlesbrough	112	460	310	470	541	97	304	2,294
Newcastle upon Tyne	7	17	8	8	6	7	14	67
North Tyneside	201	552	643	1,018	843	202	444	3,903
Northumberland	264	939	968	1,211	1,067	218	761	5,428
Redcar and Cleveland	225	546	666	1,009	777	232	503	3,958
South Tyneside	189	587	662	847	764	165	468	3,682
Stockton-on-Tees	45	133	130	116	107	32	85	648
Sunderland	254	676	732	955	999	267	561	4,444
TOTALS	1,694	5,054	5,279	7,344	6,396	1,635	4,028	31,430

North West Turnout

Local Council	Population age 11-18	Total Vote	Turnout %
Blackburn with Darwen	17,116	5,027	29.37%
Blackpool	12,491	237	1.90%
Bolton	28,987	8,090	27.91%
Bury	18,716	31	0.17%
Cheshire East	35,066	4,048	11.54%
Cheshire West and Chester	30,315	217	0.72%
Cumbria	42,642	4,713	11.05%
Halton	12,707	1,425	11.21%
Knowsley	13,975	655	4.69%
Lancashire	112,612	16,359	14.53%
Liverpool	39,543	3	0.01%
Manchester	50,248	6,729	13.39%
Oldham	25,940	10,888	41.97%
Rochdale	22,525	395	1.75%
Salford	23,061	1,593	6.91%
Sefton	24,041	665	2.77%
St. Helens	15,932	2	0.01%
Stockport	27,564	2,960	10.74%
Tameside	21,220	5,917	27.88%
Trafford	25,335	8,814	34.79%
Warrington	19,658	1,513	7.70%
Wigan	30,838	5,872	19.04%
Wirral	30,155	1,716	5.69%

North West

	Covid Recovery	Education and Learning	Environment	Health and Wellbeing	Jobs, Money, Homes and Opportunities	Our Rights and Democracy	Poverty	Total Vote
Blackburn with Darwen	255	1,084	539	1,033	1,118	299	699	5,027
Blackpool	18	41	47	40	53	20	18	237
Bolton	468	1,660	1,082	1,711	1,490	443	1,236	8,090
Bury	0	7	4	6	8	2	4	31
Cheshire East	241	569	734	1,092	581	253	578	4,048
Cheshire West and Chester	8	48	26	53	46	15	21	217
Cumbria	204	807	886	1,077	1,000	220	519	4,713
Halton	104	218	227	353	240	115	168	1,425
Knowsley	25	91	84	199	120	76	60	655
Lancashire	1,790	2,480	2,339	2,690	3,308	1,617	2,135	16,359
Liverpool	0	1	1	1	-	-	-	3
Manchester	352	1,983	806	1,013	1,196	401	978	6,729
Oldham	251	1,891	1,240	1,610	3,219	670	2,007	10,888
Rochdale	63	64	52	70	34	37	75	395
Salford	189	181	151	332	466	119	155	1,593
Sefton	70	136	102	129	105	41	82	665
St. Helens	0	-	-	-	-	1	1	2
Stockport	70	516	513	772	540	124	425	2,960
Tameside	290	1,257	724	1,269	1,449	263	665	5,917
Trafford	149	1,651	2,306	1,590	389	1,320	1,409	8,814
Warrington	69	245	335	449	112	116	187	1,513
Wigan	302	1,148	946	1,180	1,171	354	771	5,872
Wirral	269	274	161	418	202	205	187	1,716
TOTALS	5,187	16,352	13,305	17,087	16,847	6,711	12,380	87,869

Northern Ireland Turnout

Local Council	Population age 11-18	Total Vote	Turnout %
Northern Ireland	191,993	97	0.05%

Northern Ireland

	Covid Recovery	Education and Learning	Environment	Health and Wellbeing	Jobs, Money, Homes and Opportunities	Our Rights and Democracy	Poverty	Total Vote
Antrim and Newtownabbey			1			1		2
Ards and North Down		1	3					4
Armagh City, Banbridge and Craigavon	3	5	2	3	1			14
Belfast			2	4		2		8
Causeway Coast and Glens	2	6	8	2	5	1	4	28
Derry City and Strabane								-
Fermanagh and Omagh				1				1
Lisburn and Castlereagh					2	3		5
Mid and East Antrim		3		1				4
Mid Ulster	4	3	1	4	8	3	2	25
Newry, Mourne and Down		1	2	1	1	1		6
TOTALS	9	19	19	16	17	11	6	97

Scotland Turnout

Nation	Population age 11-18	Total Vote	Turnout %
Scotland	460,138	4,993	1.09%

*This turnout is based on online votes and consultation data from the Scottish Youth Parliament's 2021 - 2026 Manifesto.

Scotland

Scotland Total	701	659	717	747	696	705	768	4,993
----------------	-----	-----	-----	-----	-----	-----	-----	-------

South East Turnout

Local Council	Population age 11-18	Total Vote	Turnout %
Bracknell Forest	13,076	3,441	26.32%
Brighton and Hove	23,228	1,820	7.84%
Buckinghamshire	56,562	613	1.08%
East Sussex	48,922	9,565	19.55%
Hampshire	127,689	17,385	13.62%
Isle of Wight	11,375	893	7.85%
Kent	153,377	989	0.64%
Medway	27,598	7,988	28.94%
Milton Keynes	28,879	3,174	10.99%
Oxfordshire	64,762	17	0.03%
Portsmouth	18,967	1,319	6.95%
Reading	14,700	926	6.30%
Slough	17,279	4,543	26.29%
Southampton	21,017	6,080	28.93%
Surrey	117,389	1,365	1.16%
West Berkshire	16,599	152	0.92%
West Sussex	77,675	11,212	14.43%
Windsor and Maidenhead	16,541	422	2.55%
Wokingham	18,405	458	2.49%

South East

	Covid Recovery	Education and Learning	Environment	Health and Wellbeing	Jobs, Money, Homes and Opportunities	Our Rights and Democracy	Poverty	Total Vote
Bracknell Forest	113	649	568	700	809	137	465	3,441
Brighton and Hove	58	383	303	401	315	153	207	1,820
Buckinghamshire	31	173	43	90	137	56	83	613
East Sussex	406	1,853	1,834	1,748	2,011	599	1,114	9,565
Hampshire	628	2,706	4,260	3,457	3,532	783	2,019	17,385
Isle of Wight	38	160	169	210	182	50	84	893
Kent	32	189	166	262	159	48	133	989
Medway	452	1,676	1,168	1,674	1,539	478	1,001	7,988
Milton Keynes	50	598	476	800	681	169	400	3,174
Oxfordshire	0	2	6	5	2	-	2	17
Portsmouth	45	280	239	299	225	70	161	1,319
Reading	35	264	83	137	250	95	62	926
Slough	206	1,093	579	622	933	415	695	4,543
Southampton	260	995	1,042	1,283	1,494	334	672	6,080
Surrey	75	185	327	229	195	121	233	1,365
West Berkshire	0	26	37	33	13	5	38	152
West Sussex	474	1,887	2,567	2,434	1,718	1,035	1,097	11,212
Windsor and Maidenhead	12	77	112	89	63	34	35	422
Wokingham	33	44	106	106	64	28	77	458
TOTALS	2,948	13,240	14,085	14,579	14,322	4,610	8,578	72,362

South West Turnout

Local Council	Population age 11-18	Total Vote	Turnout %
Bath and North East Somerset	17,124	84	0.49%
Bournemouth, Christchurch and Poole	33,402	5,474	16.39%
Bristol, City of	38,010	599	1.58%
Cornwall	49,294	1,122	2.28%
Devon	67,713	4,230	6.25%
Dorset	32,809	6,474	19.73%
Gloucestershire	57,909	1,505	2.60%
Isles of Scilly	133	0	0.00%
North Somerset	19,340	1	0.01%
Plymouth	22,735	8,701	38.27%
Somerset	50,550	1,921	3.80%
South Gloucestershire	25,684	957	3.73%
Swindon	20,971	1	0.00%
Torbay	11,189	455	4.07%
Wiltshire	48,183	4,373	9.08%

South West

	Covid Recovery	Education and Learning	Environment	Health and Wellbeing	Jobs, Money, Homes and Opportunities	Our Rights and Democracy	Poverty	Total Vote
Bath and North East Somerset	4	7	6	10	46	7	4	84
Bournemouth, Christchurch and Poole	342	947	907	1,601	776	409	492	5,474
Bristol, City of	25	91	125	141	78	62	77	599
Cornwall	55	190	277	135	179	165	121	1,122
Devon	252	666	854	790	370	432	866	4,230
Dorset	304	1,454	1,314	1,361	1,081	348	612	6,474
Gloucestershire	46	291	372	403	160	71	162	1,505
Isles of Scilly	0							-
North Somerset	0	1	-	-	-	-	-	1
Plymouth	585	1,485	1,698	2,086	1,305	597	945	8,701
Somerset	58	458	332	378	366	99	230	1,921
South Gloucestershire	29	173	180	142	78	155	200	957
Swindon	0	1	-	-	-	-	-	1
Torbay	3	78	105	136	38	30	65	455
Wiltshire	296	982	837	1,079	472	296	411	4,373
TOTALS	1,999	6,824	7,007	8,262	4,949	2,671	4,185	35,897

Wales Turnout

Local Council	Population age 11-18	Total Vote	Turnout %
Blaenau Gwent	5,938	13	0.22%
Bridgend	12,926	681	5.27%
Caerphilly	17,072	3,119	18.27%
Cardiff	32,438	7	0.02%
Carmarthenshire	17,071	1,064	6.23%
Ceredigion	5,796	2,160	37.27%
Conwy	9,638	3	0.03%
Denbighshire	8,863	0	0.00%
Flintshire	14,717	10	0.07%
Gwynedd	10,887	3	0.03%
Isle of Anglesey	5,911	0	0.00%
Merthyr Tydfil	5,504	4	0.07%
Monmouthshire	8,438	916	10.86%
Neath Port Talbot	12,776	514	4.02%
Newport	14,861	7	0.05%
Pembrokeshire	11,109	262	2.36%
Powys	11,291	1	0.01%
Rhondda Cynon Taf	22,062	501	2.27%
Swansea	21,368	2	0.01%
Torfaen	8,495	459	5.40%
Vale of Glamorgan	12,585	1,137	9.03%
Wrexham	12,835	3	0.02%

Wales

	Covid Recovery	Education and Learning	Environment	Health and Wellbeing	Jobs, Money, Homes and Opportunities	Our Rights and Democracy	Poverty	Total Vote
Blaenau Gwent	2	3	1	1	4	1	1	13
Bridgend	36	99	90	274	84	37	61	681
Caerphilly	211	477	404	1,125	544	103	255	3,119
Cardiff	1	2	-	1	-	1	2	7
Carmarthenshire	179	242	108	288	115	13	119	1,064
Ceredigion	154	371	405	483	451	113	183	2,160
Conwy	0	-	2	1	-	-	-	3
Denbighshire	0	-	-	-	-	-	-	-
Flintshire	0	-	5	3	1	1	-	10
Gwynedd	0	-	-	1	1	-	1	3
Isle of Anglesey	0	-	-	-	-	-	-	-
Merthyr Tydfil	0	2	1	-	1	-	-	4
Monmouthshire	92	111	101	280	170	80	82	916
Neath Port Talbot	58	67	87	114	76	35	77	514
Newport	0	1	1	1	2	1	1	7
Pembrokeshire	29	42	47	52	54	17	21	262
Powys	0	1	-	-	-	-	-	1
Rhondda Cynon Taff	39	94	74	128	73	40	53	501
Swansea	0	-	-	-	2	-	-	2
Torfaen	11	116	91	120	88	12	21	459
Vale of Glamorgan	58	247	237	243	182	39	131	1,137
Wrexham	1	1	-	-	-	1	-	3
TOTALS	871	1,876	1,654	3,115	1,848	494	1,008	10,866

West Midlands Turnout

Local Council	Population age 11-18	Total Vote	Turnout %
Birmingham	123,327	13	0.01%
Coventry	33,878	5	0.01%
Dudley	30,563	1,537	5.03%
Herefordshire, County of	16,138	2	0.01%
Sandwell	34,860	2,422	6.95%
Shropshire	28,507	969	3.40%
Solihull	21,354	2,544	11.91%
Staffordshire	77,553	1,541	1.99%
Stoke-on-Trent	23,863	785	3.29%
Telford and Wrekin	18,085	4,855	26.85%
Walsall	29,528	5	0.02%
Warwickshire	52,213	709	1.36%
Wolverhampton	25,808	10,146	39.31%
Worcestershire	53,285	2,362	4.43%

West Midlands

	Covid Recovery	Education and Learning	Environment	Health and Wellbeing	Jobs, Money, Homes and Opportunities	Our Rights and Democracy	Poverty	Total Vote
Birmingham	1	6	2	1	1	1	1	13
Coventry	0	-	1	3	-	1	-	5
Dudley	74	294	252	357	389	64	107	1,537
Herefordshire	0	-	-	1	-	1	-	2
Sandwell	220	379	335	521	513	191	263	2,422
Shropshire	94	83	242	113	86	125	226	969
Solihull	87	435	467	489	614	146	306	2,544
Staffordshire	117	242	288	375	286	64	169	1,541
Stoke-on-Trent	58	106	105	167	208	46	95	785
Telford and Wrekin	175	868	913	1,275	941	242	441	4,855
Walsall	0	2	1	-	1	1	-	5
Warwickshire	31	153	118	160	73	33	141	709
Wolverhampton	699	2,038	1,728	1,906	1,990	531	1,254	10,146
Worcestershire	84	465	501	460	468	123	261	2,362
TOTALS	1,640	5,071	4,953	5,828	5,570	1,569	3,264	27,895

Yorkshire & Humberside Turnout

Local Council	Population age 11-18	Total Votes	Turnout %
Barnsley	22,044	7,758	35.19%
Bradford	62,347	8	0.01%
Calderdale	20,323	1,122	5.52%
Doncaster	29,261	8,466	28.93%
East Riding of Yorkshire	29,641	5,229	17.64%
Kingston upon Hull, City of	23,401	3,492	14.92%
Kirklees	44,186	7	0.02%
Leeds	70,274	5,546	7.89%
North East Lincolnshire	15,088	3	0.02%
North Lincolnshire	16,278	1,548	9.51%
North Yorkshire	55,095	4,644	8.43%
Rotherham	25,130	4,420	17.59%
Sheffield	52,723	6,968	7.71%
Wakefield	31,114	4,346	13.97%
York	16,889	1,485	8.79%

Yorkshire & Humberside

	Covid Recovery	Education and Learning	Environment	Health and Wellbeing	Jobs, Money, Homes and Opportunities	Our Rights and Democracy	Poverty	Total Vote
Barnsley	520	1,140	1,197	1,751	1,894	319	937	7,758
Bradford	0	1	1	2	2	1	1	8
Calderdale	19	201	201	259	225	52	165	1,122
Doncaster	402	1,351	1,218	1,903	1,851	470	1,271	8,466
East Riding of Yorkshire	354	855	914	1,130	1,233	267	476	5,229
Kingston upon Hull, City of	180	725	532	852	701	171	331	3,492
Kirklees	0	1	3	1	1	1	-	7
Leeds	318	835	1,014	1,102	1,067	470	740	5,546
North East Lincolnshire	0	2	-	-	-	1	-	3
North Lincolnshire	98	191	237	465	331	88	138	1,548
North Yorkshire	229	939	901	948	903	278	446	4,644
Rotherham	228	807	721	991	910	240	523	4,420
Sheffield	338	1,295	1,157	1,589	1,373	342	874	6,968
Wakefield	1064	492	423	957	879	162	369	4,346
York	74	199	336	317	259	78	222	1,485
TOTALS	3,824	9,034	8,855	12,267	11,629	2,940	6,493	55,042



To find out more, please contact BYC:

E: mail@byc.org.uk

W: www.byc.org.uk

Facebook: British Youth Council

Twitter: bycLIVE