

Find out more...

Online: www.bolton.gov.uk/fundedchildcare

Phone: 01204 332170

Email: families@bolton.gov.uk

In person at Start Well Children's Centres, or via childcare providers.

 @BoltonFIS

 @BoltonFIS



**Bolton
Council**

Which early education and childcare providers offer places?

Funded places are available at participating:

- private day nurseries
- nursery classes within a maintained school
- nursery schools
- playgroups and pre-schools
- childminders

There may be charges for some extra services such as trips and lunches – ask your childcare provider for their charging policy before you register.

Some things you need to know:

- funded places start from the beginning of the term after your child's second or third birthday
- hours per week are based on 38 weeks of the year
- children can access less hours per week over more weeks of the year to make it more flexible for you – speak to your childcare provider about their sessions and availability
- eligibility criteria apply for some funded places
- eligibility checks for 30 hour places must be completed by 31st March, 31st August or 31st December to start a place the following term



**Bolton
Council**

Childcare
Choices

Quality early years education
and childcare in **Bolton**

Funded early education and childcare for 2, 3 and 4 year olds

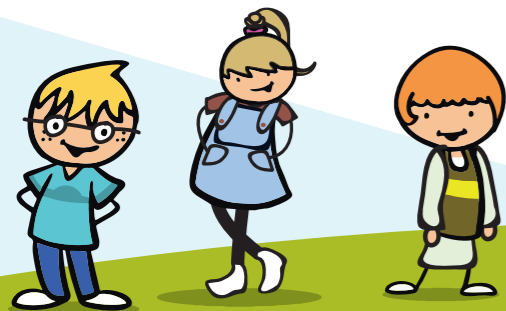
Funded early education and child care can help

Your child to:

- play with friends
- try new things
- learn new skills
- develop language
- get ready for school

You to:

- work
- access training
- meet other parents
- save money!



Funded places for two year olds

Some two year old children are eligible for the equivalent of 15 hours per week of funded early education and childcare.

Children will be eligible if they:

- are currently looked after by the Local Authority
- receive Disability Living Allowance (DLA)
- have an Education, Health and Care Plan (EHCP)
- have left care through special guardianship or an adoption or residence order

Families who claim certain benefits and whose household income is below the threshold may also qualify.

Check if you may be eligible by speaking to your health visitor or Start Well Children's Centre or go online: www.bolton.gov.uk/fundedchildcare
You will need to provide your national insurance number and your child's birth certificate.

Funded places for all three and four year olds

All three and four year old children can access the equivalent of 15 hours of funded early education and childcare - these are universal hours – you just need to register with a childcare provider.



Funded places for three and four year olds - 30 hours

Three and four year old children of eligible working parents can access an additional 15 hours per week – this is a 30 hours place. Your child does not have to attend for the full 30 hours.

To be eligible each parent or carer in the household needs to:

- earn the equivalent of 16 hours per week at national living wage
- be on maternity, paternity, adoption or sick leave
- have a disability or a caring responsibility

Eligibility checks must be completed through Childcare Choices the term before your child is due to start and you must reconfirm eligibility every three months. www.childcarechoices.gov.uk