

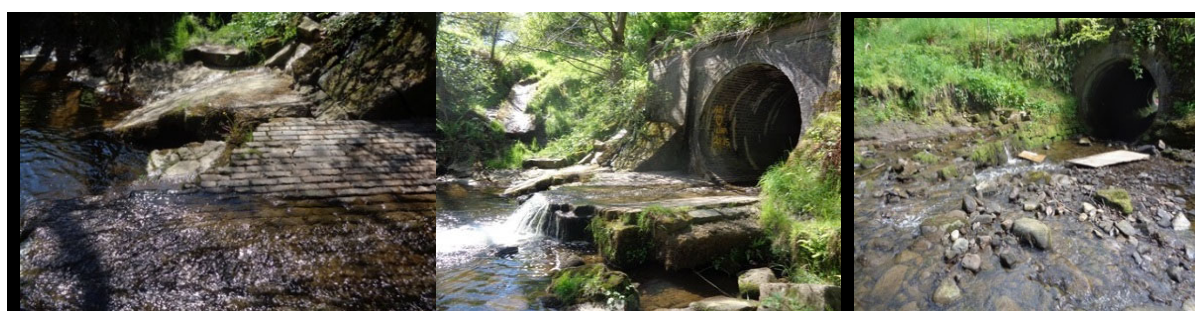
Colliers Row Culvert (No.349)

Colliers Row Culvert is a 28m long, 2.5m diameter Masonry Culvert that carries the Colliers Row highway between Chorley Old Road and Scout Road.

A safety Inspection was carried out in 2015 that highlighted that the structure was slowly moving and starting to break up creating structural safety issues. The culvert was sliding downstream, the small retaining walls that support the steep embankment were collapsing, the highway drainage provisions were severely damaged, and the spillway had collapsed along with the upstream training walls. The scheme was placed on the capital programme and monitored while awaiting adequate funding.



Recent highway improvement works appear to have exacerbated the situation forcing highway water runoff to enter the broken drainage sluices and the immediate downstream areas more vigorously.



A feasibility study was undertaken, and a scheme designed to secure the failing culvert. The works included grouting the culvert annulus, replacing the training walls, refurbishment of the retaining walls, replacement of the highway drainage and to prevent further downstream movement, a new spillway installed that includes piled reinforcement.



Spend 2018-19

£149,095.89 including fees

The work is currently ongoing with the completed scheme is expected to cost in excess of £200k. The remaining cost will be made up from the Highways Capital budget.