

# our **Bolton**

Issue 2 Spring 2019



**Rugby  
League  
World Cup**  
*comes to town*

**Church  
Wharf**



#### **Town centres**

Investing in our communities

#### **Young People**

New centres planned for Farnworth and Kearsley

#### **Support Services**

Helping those with addictions

# Bolton in brief...



The Mayor of Bolton, Cllr Elaine Sherrington is pictured helping to pack the hampers

## Vulnerable families supported with Christmas festivities

**More than 4000 children and adults were able to enjoy Christmas thanks to local organisations.**

Charity Urban Outreach runs an annual Christmas appeal providing hampers Christmas pudding; mince pies; cheese; chocolate; crisps, fizzy drinks, biscuits; cranberry sauce; chicken and all the trimmings. And once again Haworth Group offered a unit at Logistics North for free to sort and pack the hampers.

Organisations who helped the campaign included: Bolton Council; Bolton at Home; Seddons; Keoghs; Asda; Bolton Wanderers Trust; schools, and churches.

## Housing pledge revealed

**Bolton's housing providers have pledged to work together to increase the supply and choice of affordable homes.**

The council joined Bolton at Home representatives to see the new Park Grove development, which is under construction off Cricketers Way, Westhoughton. The agreement will support Bolton at Home's ambition to bring 1,400 new properties to the local affordable housing market over the next five years through a mixture of its own new-build developments and the acquisition of homes from private sector developers and other providers.

## Bolton protects green belt from housing in regional plan

**Greater Manchester's vision for homes, jobs and the environment from 2018 to 2037 has now been published.**

And locally, Bolton Council has protected the green belt and removed proposed green belt sites for housing – the only council in the region to do so.

Bolton is proposing 13,800 new homes solely on urban sites and to reclassify two new sites as green belt land – Horwich Golf Course and Ditchers Farm in Westhoughton.

The plan can be found at [www.gmconsult.org](http://www.gmconsult.org) and consultation closes on 18 March.

## New Audi dealership on way

**Work on building a new Audi dealership on the site of the former Bolton Community College is well underway.**

The state of the art showroom is located off Manchester Road, a key gateway into the town.

Jardine Motors Group will operate the new Audi centre, which will feature a 9,000sq ft showroom, a 21-bay workshop for servicing and will also have parking space for more than 100 new and used cars.





# Bolton ‘most improved’ council for productivity

Bolton Council has been named one of the top 10 most improved local authorities in a national league table.

The ranking of 150 councils has been compiled by national consultancy firm, Impower.

They look at councils across the country and rank who is getting the best results for its citizens and spending money most effectively.

The league table measures performance against outcomes in six different areas: children’s services; older people; all age disability; health and social care interface; housing and homelessness; and waste and recycling.

The index showed Bolton is the fourth most improved council in England for its productivity per pound invested.

## Why the council moved up the table

Ofsted inspectors gave the council a ‘Good’ rating following an intensive review of its children’s social care services last summer. The council was praised for its good social work practice and for improving the experiences and outcomes of the children it looks after.

All three of the council’s childcare centres now have a ‘Good’ Ofsted rating after Castle Hill Young People’s Centre improved last year.

Adult social care services are rated good by the Care Quality Commission (CQC) with staff described as caring, kind and hard-working.

These services include Laburnum Lodge residential intermediate care home, in Brightmet, which provides care for those whose needs are unable to be met at home and Wilfred Geere House, in Farnworth, cares for vulnerable people with dementia and offers families a break from caring for their loved ones, and Home Support Re-ablement supports people to remain at home.

The waste and recycling team has increased from 39% to 47% and helped the authority to save more than £4m in waste disposal costs following the roll-out of slim bins in 2016.

## Message from the Leader of the Council



**Where and why the council spends public money is personal for many residents and rightly so.**

The spotlight on the public purse is greater than it ever was. I’m really pleased that our hard work has been recognised in a national league table. We are successfully raising the bar and leading the way as one of the best in the country for productivity and spending taxpayers’ money most effectively.

Against a backdrop of difficult circumstances, since the grant we receive started to recede in 2011, achievements such as this, are remarkable. This report is testament to the great work staff are doing.

Our vision for the future of Bolton is one of growth and making the town a desirable place to live and work. We are working to make this happen and there are some fantastic opportunities ahead of us, such as our £1bn regeneration masterplan which is underway.

We can’t rest on our laurels as we try to improve our efficiency to meet our economic regeneration aspirations in our local centres across Bolton, and in our communities to ensure we are there to meet the needs of children and care for our older residents.



READ MORE AT...  
[www.bolton.gov.uk](http://www.bolton.gov.uk)



## New Horwich Loco Works link road plans on horizon

**Plans for a new £12m link road to serve the Horwich Loco Works housing development are due to be submitted to Bolton Council.**

The road will link the £262m Rivington Chase scheme to Middlebrook Retail Park, Horwich Parkway railway station and junction six of the M61. It will be funded from a national government grant.

Rivington Chase, which has outline planning permission for 1,700 new homes, retail and leisure facilities, is being developed by Bluemantle with Bolton Council, Homes England, and Network Rail.



## £45m scheme for Trinity Gateway

**Plans have been put forward to regenerate a key gateway into Bolton town centre.**

The £45 million town centre development could see a 230ft 20-storey high tower built alongside a new 500 space multi-storey car park and a 30,000 sq ft office block if approved. The buildings would be built on land at the junction of Trinity Street and Bradshawgate, next to Bolton's bus and rail Interchange.

Trinity Gateway is part of Bolton Council's £1bn masterplan for transform the town centre, and Bolton Regeneration Limited (BRL), led by investment and development specialist Midia, is working with Bolton Council to regenerate the site. BRL expects to submit a planning application this Spring.



## Bolton station gets £1m facelift



**A £1m package of upgrades to Bolton railway station has been announced by Network Rail, Northern and TransPennine Express.**

Between now and spring this year:

- new seating and signage will be fitted
- station toilets and waiting rooms will be revamped
- pigeon netting will be fitted to help keep the space clean
- And the under-used Victorian building on platforms four and five will be refurbished for potential retail, enterprise and community use

## School expansions extra places

**Nearly 300 new primary school places will be created as part the council's commitment to provide every young person with a first-class education.**

Proposals to expand Gaskell Street, Bolton St Catherine's and S.S. Osmund and Andrews schools will deliver an extra 295 places.

The £3.8m cost of the expansions will be covered by funding from the Department for Education, with work set to take place once planning permission is secured.

Additional proposals to expand Gilnow, Markland Hill and Moorgate primary schools will also be explored in case of further demand in the future.



Horwich town centre

# Multi-million boost for local town centres

The council has unveiled proposals to invest a pot of £12 million to regenerate local town centres.

It has been revealed that Farnworth, Horwich, Little Lever and Westhoughton will all benefit from the new fund.

The council had set aside £100m for the Bolton town centre masterplan and has earmarked some of this to breathe new life into district town centres.

This is now possible due to additional private sector investment in Bolton's masterplan.

Allocating extra funding to the borough's largest centres will enable the council to continue to invest in smaller key centres such as Kearsley and Blackrod.

Leader of Bolton Council, Cllr Linda Thomas, said that the proposed investment in these key local centres underlined the council's commitment to regenerating town centres across the borough.

"This proposed investment will help to regenerate, reinvigorate and reshape town centres to reflect changed shopping habits and to meet the requirements of what people now want," said Councillor Thomas.

Town centres will be supported to produce a development strategy and masterplan in consultation with the local community.

Each centre's plan will need to be strong enough to attract private investment to support their redevelopment vision.

"As with Farnworth, we will work with representatives from across the community, to help them shape their town centre plans," she added.

Bolton Council's £100m fund is financed through a low interest loan, paid for by dividends from the Manchester Airport and the Yorkshire Purchasing Company.

- See **p13** for more about the plans for Farnworth



Blackrod town centre



Kearsley town centre



Little Lever town centre



Westhoughton town centre

*"This investment will deliver long-term benefits for local communities right across the borough, which is an absolutely priority for us."* - Councillor Linda Thomas



READ MORE ABOUT THE PLANS...  
[www.investinbolton.com](http://www.investinbolton.com)

# Bolton Council needs foster carers

Become a foster carer with Bolton Council and we'll support you every step of the way.

Do something incredible.

Go to [youcanfoster.org/bolton](https://youcanfoster.org/bolton)

Tel: 0800 1071564





↑ GM Mayor Andy Burnham and Cllr Linda Thomas meet nurses, volunteers, and council staff supporting rough sleepers

# A warm place to stay for rough sleepers

More than 60 people get a bed for the night in Bolton who would otherwise have been sleeping rough.

The 'A Bed Every Night' initiative started in November, as part of Mayor of Greater Manchester Andy Burnham's pledge to support those sleeping on the street.

The Bolton Homeless Alliance has been working hard to make sure that rough sleepers have a warm place to stay.

The partnership between Bolton Council, Bolton Council of Mosques (BCoM), Urban Outreach, Homeless Aid UK, and the Al-Khair Foundation is working together to help people to a life permanently off the streets.

Accommodation is arranged in hostels and B&Bs and the Alliance is now periodically opening an overnight shelter when the cold weather sets in.

To run the shelter,

volunteers are needed to provide support and help.

A spokesman for the Alliance said: "We have had more than 100 requests for applications but we still need more volunteers and we would urge people to get in touch."

Those interested in becoming a volunteer can contact [homelessalliance@urbanoutreach.co.uk](mailto:homelessalliance@urbanoutreach.co.uk)

Executive Cabinet Member for Environmental Services, Cllr Nick Peel, added: "Rough sleeping is a significant issue both nationally and locally – we recognise this, and we are working hard to tackle it."

"The issue of homelessness is very complex. Understandably, people often associate street begging with homelessness. But in reality they are not the

same issue.

"Giving money directly to people on the street is not usually a good idea – we know from all our outreach work that some people begging on the street are not homeless."

Sample figures showed three quarters of those asking for money in Bolton's streets had a place to stay. Each of them was receiving benefits and registered with a GP.

## Bolton Homeless Street Watch

Community nurses from Bolton NHS Foundation Trust, work closely with the council and Urban Outreach, speaking to rough sleepers and those at risk of becoming homeless.

They provide on the spot health advice and treatment, and valuable housing advice and support. The project also delivers a weekly drop-in clinic, where clients can receive Primary Care screening and advice on other health matters, and access housing advice.

**HELP**

If you come across a rough sleeper let us know in confidence at [streetlife@urbanoutreach.co.uk](mailto:streetlife@urbanoutreach.co.uk) or ring Housing Options on **01204 335900**.

If you're in danger of becoming homeless also speak to Housing Options on **01204 335900** or visit the **One Stop Shop**, Bolton Town Hall.

# Easter Recycling

When you have enjoyed all your chocolate, make sure you...

...recycle your empty cardboard boxes in the beige bin

...recycle your foil in the burgundy bin

Don't forget all plastic packaging goes in your grey bin and is converted into green energy!

 recycle for Bolton [www.bolton.gov.uk/loverecycling](http://www.bolton.gov.uk/loverecycling)

Follow us at:



@Recycle for Bolton



@Recycle4Bolton



**Bolton**  
**Council**





# New £150m neighbourhood

## first step in transforming Bolton town centre

Plans for the transformation of the Church Wharf area of Bolton town centre have been announced.

Muse Developments has launched plans to create the new £150m neighbourhood.

Set alongside the River Croal and between St Peters Way (A666), Bank Street, Manor Street and Folds Road, the underused site is set to be transformed.

*The new neighbourhood will boost the local economy with up to 290 jobs*

The plans include around 320 homes, including townhouses and apartments, providing homes for young people, first-time buyers and families, a new hotel, commercial offices and leisure and retail opportunities, such as a café, convenience store or bar or restaurant.

The plans include improvements to the river side with a walkway through a new 'river park' and build a new footbridge linking the site to Bank Street.

The new neighbourhood would boost the local economy with up to 290 jobs when completed and 130 jobs during construction.

David Burkinshaw, Muse Developments, said: "Cities and towns across the north are being revitalised as more people choose to live in urban centres. This shift in the way people want to live is enabling new neighbourhoods to be created with a daytime and evening economy, where restaurants, bars, cafes and shops all thrive."

Councillor Ebrahim Adia, Deputy Leader of Bolton Council, said: "Church Wharf is a key gateway into



Bolton town centre and one of five sites in the council's billion-pound town centre masterplan. Creating a new neighbourhood at Church Wharf will help regenerate the town centre and breathe new life into the area."

Muse Developments expects to submit a planning application in Spring 2019 with a decision expected in the summer.



READ MORE ABOUT THE PLANS...  
[www.churchwharfbolton.co.uk](http://www.churchwharfbolton.co.uk)

# Bolton's Free Bus

Number 500 is the free\* hop-on hop-off bus for the town centre. Monday to Saturday 9am to 5pm Every 15 minutes

It has 15 stops linking offices, shops, railway and bus station, market and car parks



**Metroshuttle Route & Stop**

**Direction Of Travel**

**Railway Station**

**Bus Station**

**NCP Multi-storey Car Park**

**Skylink Footbridge**

Transport for Greater Manchester **Bolton Council**

\*Funded by Bolton Council and TfGM

# Bolton's budget set for 2019-21

The council's budget and council tax rate has been agreed for 2019-2021.

The council has set a 2.25% increase in council tax with 1% for adult social care with the remaining 1.25% used for other services.

With the Greater Manchester Mayors Precept for police, transport and other services, the bill for residents will rise by 3.9%.

Despite this a further £31.5 million of savings need to be made during the next two financial years.

The authority plans to use £8 million from reserves to balance its 2019-21 budget, meaning departments will have to find savings of £23.5 million.

A further £8 million from reserves will allow savings to be phased in gradually. Savings set out in the budget report will be subject to detailed proposals and consultation.

Money for one-off projects has also been decided: £2m is to be spent on residential roads and pavements. A further £4m, from surplus from PSP, the council's partnership, is allocated for further investment in district town centres, principally in Farnworth.

Money from the capital budget sits separately to the revenue budget. While the revenue budget covers the council's day-to-day

spending on services, the capital budget is used to invest in infrastructure and fixed assets.

If you think of your household budget is what you spend on food, bills, and other items. The capital budget is the money you would use to pay for a new, one off item such as a sofa or TV.

Leader of Bolton Council, Cllr Linda Thomas, said: "Sadly, we know that the changes we are proposing will affect the lives of people in our town.

"Unfortunately, cuts cannot be avoided. We face a major financial challenge and we will have to find new ways to deliver our services. We have listened however to the consultation and the Cabinet has reduced the bowling greens' savings target from £135,000 to £67,000.

"However, our vision for the future of Bolton is one of growth and making the town a desirable place to live and work.

"We are working hard to make this happen and there are some fantastic opportunities ahead of us, such as the £1bn town centre masterplan, which will bring a significant economic boost right across our borough."

## In 2017-18...



**66%** of all pupils achieved the expected standard in Reading, Writing and Maths at KS2



More than **14,400** new requests for social care support



**77.6%** of older people discharged from hospital receive care at home



**483** net increase in number of houses (newbuilds and conversions minus demolitions)



**680kg** of waste per household was collected



# Home ownership, made affordable

Call us on:  
**01204 329922**

**There's just a few homes left at Park Grove,  
Westhoughton. Don't miss out.**

**Introducing Stonecross Homes, Bolton at Home's new shared ownership brand. Buy a share of your property and pay the rest in rent. It's the affordable way to own a home.**

Pictured is our latest development: Park Grove, a collection of 21 two and three-bedroom new-build homes in Westhoughton. Contact us on **01204 329922** or visit **stonecrosshomes.co.uk** to register your interest, book a viewing or learn more about our shared ownership offering.

Shared ownership represents Bolton at Home's commitment to providing more choice in quality, affordable homes that can make a difference to people's lives.

**Coming soon: Turton Vale at  
Guild Street, Bromley Cross.**

[www.StonecrossHomes.co.uk](http://www.StonecrossHomes.co.uk)

@StonecrossSales @StonecrossHomes

# CentralScene

www.visitbolton.com

Issue 2 - Spring 2019



## Visitor boost for town centre

**The news comes as popular attractions are recording a boost in visitors.**

As developers begin to put forward planning applications, Bolton's town centre £1bn masterplan is starting to come together.

Muse Developments has launched plans to create the new £150m neighbourhood at Church Wharf.

The scheme will include homes, hotel, offices and leisure and retail opportunities.

The River Croal will also be opened up to create new green space. Plans for new offices, apartments, and a car park have also been announced for Trinity Gateway.

A £3.8m refurbishment along with a varied calendar of events has brought 133,000 visitors to Bolton's Central Library and Museum since it re-opened in September.

The highlight of the new look galleries is Bolton's Egypt, a new exhibit showcasing thousands

of ancient Egyptian artefacts. The exhibition, which features a full-sized recreation of the tomb of Thutmose III, attracted almost 10,000 visitors on its first day alone.

Since then, the exhibition has been complemented by a number of activities which have helped Bolton's Central Library and Museum buck a national trend for declining footfall.

Traders at Bolton Market celebrated a bumper Christmas with the number of visitors on the Saturday

before the big day, the highest for 25 years. By the time families settled down to their dinner on Christmas Day, stallholders sold up to 8,000 turkeys and 4000 mince pies.

For further news from our Central Bolton partners see inside.

### In this issue...

- Page 2 Fun for all at The Market Place
- Page 4-5 The year ahead
- Page 6 This summer's fashion trends
- Page 7 Theatre and film at the library
- Page 8 What's On



## Free parking

at NCP multi-storey car parks at weekends and Bank Holidays  
Free shuttlebus around the town centre

# Fashion, food and fun for all

Whether you want to update your wardrobe for the season ahead, grab a tasty bite to eat or let your hair down with family and friends, Market Place has it all.

Fashion lovers will find themselves in shopping heaven – with a great line-up of stores including popular names like Zara, Topshop / Topman, H&M, New Look and River Island. While families will find everything they need to keep the kids sweet, in stores including Smiggle, The Entertainer, Claire's and Boots.

There are plenty of places for a quick pit-stop, with a selection of national and independent cafés to choose from, including Costa, Starbucks, Carrs Pasties, Berries Bagels & Shakes, Caffè Dolce and Waffle Up.

If you're looking to make an occasion of your dining experience, then The Vaults is home to a great choice of eateries, including Nando's, Prezzo and Baltic Cellar as well as some friendly bars including Great Ale and The Cave.

Amazonia indoor adventure play provides the ideal place for young families to let off steam while The Lost Valley has friendly rivalry down to a tee on their indoor adventure golf course. You can catch the latest blockbusters, live theatre and more at The Light cinema - with Family specials to make it more affordable to treat the little ones and the Infinity Card for regulars.

Market Place's action-packed calendar of free seasonal events means you're rarely short of things to do with crafty fun at the Little Rascals Kids' Club and lots more.

# Shining a light on the big screen

**Whether you're a hopeless romantic, sci-fi fan or love to be scared senseless, Bolton's The Light Cinema offers a range of viewing experiences.**

The Light is a modern, nine screen cineplex within the Market Place Shopping Centre. The cinema is state-of-the-art boasting comfy seating and extra leg room space for a super comfortable experience.

From big-screen blockbusters, world cinema to independent films in a smaller, more intimate setting, there is sure to be something for everyone and parking is free too – just validate your ticket at the counter.

Wait, there's more! The Light comes with a plush new, fully licensed café bar, so make sure you're seen at the hottest social scene in town. Not only this, but you too can hire out a screen and showcase your film making talents or host a private viewing party of a highly anticipated blockbuster.

Some of the major upcoming releases include: Captain Marvel, Dumbo, Hellboy, Marvel's Avengers: Endgame, Godzilla: King of the Monsters, Lion King, Shazam and more.

For full films times go to **[www.bolton.lightcinemas.co.uk/film/now-showing](http://www.bolton.lightcinemas.co.uk/film/now-showing)**

We also show a litany of live events throughout the year that include: Royal Opera House showings such as 'La Forza Del Destino' 'Faust' and more; National Theatre live showings such as 'All My Eve' 'All my Sons' 'Small Island' and more; live music events such as 'Dianna Ross Her Life, love and Legacy' 'André Rieu 2019 Maastricht Concert: Shall We Dance' and more to be announced.

For full listings of upcoming live events go to **[www.bolton.lightcinemas.co.uk/arts](http://www.bolton.lightcinemas.co.uk/arts)**



# Want to try something different whilst shopping in Bolton?

Check out the fantastic new Ping Pong Parlour, opening upstairs in Crompton Place Shopping Centre.

Anyone can drop in to play; you don't need to wear anything special or book. Just turn up, borrow a bat and ball from the parlour and join in the fun – and the best bit is its all free!



Come on you own or bring the whole family – it doesn't matter if you're five or 95, come along and have a friendly game. You can play for five minutes or twenty – or even longer if there's no-one else waiting. There's a few tables, so you shouldn't have long to wait to have a go.

Crompton Place Shopping Centre has teamed up with Table Tennis England to provide this fabulous new attraction for Bolton. The parlour will be open every day and can be found near Games Workshop.



Table tennis is a fabulous game for all ages and abilities - if you can hold a bat you can play. You don't have to be fit, and there's a lift up to the parlour so people with mobility issues can play alongside everyone else.

## This Easter with M&S

It's officially hot cross bun season!

EST. 1884

Discover this year's delicious range in M&S Bolton, then get inspired with our serving suggestions and recipe ideas on our website [www.marksandspencer.com/s/food-to-order/adventures-in-food](http://www.marksandspencer.com/s/food-to-order/adventures-in-food)



### Hot cross bread and butter pudding

This family-friendly dessert is a great way to use up leftover buns, and uses the handy cheat of fresh custard, so it's super easy.

- 6 hot cross buns, halved
- 2 tbsp marmalade
- 1-2 tbsp butter
- A handful of raisins
- Zest of 1 lemon
- 1 tub of fresh custard
- 100ml milk
- 1 tbsp demerara sugar

Preheat the oven to 170°C (fan). Stir the custard together with the milk, then grate in the lemon zest. Spread butter and marmalade inside the buns. Sandwich together again and place into a round baking dish. Pour over the custard and scatter over the raisins. Finish with a sprinkling of sugar. Bake for around 30 minutes, until just set.



# Bolton Market

Support local life





## Has everything you need

Open ; Every Tuesday, Thursday, Friday & Saturday from 9am to 5pm.

 @ Bolton Markets
 
 Bolton Markets
 

 boltonmarkets
 

[www.bolton.gov.uk](http://www.bolton.gov.uk)

 Bolton Council

# The year ahead the town centre.

12-14 July

## Ironman UK weekend

Night Run – an evening 5km run open to everyone – has joined the Ironman schedule of events, creating a full three-day festival weekend.

It will take place in and around Bolton town centre and is a fun run to encourage people of all fitness levels to have fun while being active.

It is open to anyone, aged 16 plus, and will start in Le Mans Crescent at 7pm on Friday, July 12. Entries are limited, and cost £10. For more details and to enter, visit [www.ironman.com/uk](http://www.ironman.com/uk).

Musical entertainment around the course and a festival finish are planned, with food and drink vendors at the finish line in Victoria Square. The Ironman UK weekend continues with the world's largest IronKids event on Saturday 13 July, which is a sellout, with the Ironman UK triathlon on Sunday



## New bike course for Ironman UK

Ironman UK has introduced an updated bike course which includes a section through the town centre.

The changes will bring more of the race into Bolton making the town centre one of the best and most vibrant spectator areas on the course even before athletes start making their way to the iconic finish line in Victoria Square. The Ironman UK triathlon involves a 2.4-mile swim, a 112-mile bike ride finishing with a marathon into Bolton town centre.

The changes to the bike course are designed to take the course into new communities while still maintaining some of the areas that have become iconic features of the renowned event.

Triathletes will ride from the swim at Pennington Flash to Horwich then along Chorley New Road in to the town centre and along the cobbles of Le Mans Crescent, before heading through Tonge Moor and Brightmet to Bury and the Lancashire countryside before heading back to Bolton via Rivington and Horwich.

Once completing the marathon the athletes will run the marathon loop several times through the town centre, Queens Park and up and down Chorley New Road before finishing on Victoria Square.



For further information on the new bike course and to register, please visit [www.ironman.com/uk](http://www.ironman.com/uk).



# for

## 7 August **Playday**

Come and join us for another fantastic, fun-filled day on Victoria Square, Bolton.

This year we will celebrate National Play Day on Wednesday 7th August, with lots of free, fun, family-friendly activities taking place! This year's theme is 'Fun Days Out'.



## 23-26 August **Bolton Food and Drink Festival**

Bolton Food and Drink Festival has picked up another national award for having the best food market in the country.

The festival won the 'Best Market Attraction' category at the British Market of the Year Awards from the National Association of British Market Authorities (NABMA). In 2017, the festival scooped the NABMA award for having the 'Best Food Market'.

The festival is organised by Bolton Council, in association with Aldi, and takes place annually on the August Bank Holiday weekend. The 2018 festival celebrated its 13th anniversary last year and attracted a record breaking 270,000 visitors. Details of this year's event will be announced soon.

For further information see

**[boltonfoodanddrinkfestival.com](http://boltonfoodanddrinkfestival.com)**

[f boltonfoodanddrinkfestival](https://www.facebook.com/boltonfoodanddrinkfestival) [@boltonfoodfest](https://twitter.com/boltonfoodfest) [i boltonfoodfest](https://www.instagram.com/boltonfoodfest)



## **Exciting events this Autumn and Winter**

There's lots to look forward to later in the year – Bolton Pride, Bolton Film Festival and our traditional Christmas Lights Switch on in November. Treat yourself to the traditional panto in the Albert Halls – this year its Aladdin.

To keep up to date as news is announced of these and other events see **[www.visitbolton.com](http://www.visitbolton.com)**





# Summer is just around the corner

The weather is warming up, so you'll need the red-hot fashion to match. Whether you're jetting off on a dream holiday or hosting a BBQ in your back yard, Bolton town centre has everything you need to look your best. With all the top summer trends from animal print and California chic to 80s neon and retro bucket hats. The Met Office is predicting record temperatures but with these fabulous fashion finds, at least your wardrobe will stay cool.



TK Maxx, neon orange reptile effect grab bag, £24.99

NEXT, yellow tea dress, £26



TK Maxx, yellow shorts, £31



River Island, blue floral cross body bag, £18



M&S spring/summer campaign



ZARA, animal print knit skirt, £19.99



H&M short-sleeved shirt, £17.99



River Island, red bucket hat, £15



TK Maxx, brown leopard print leather high heels, £24.99



River Island, £50



River Island, blue 'California' denim baseball cap, £12

# Theatre and film at the library

The northern premiere of an Arthur Miller play is coming to a newly-created theatre space, in Bolton town centre.

Renowned theatre director, Professor David Thacker, is to stage Miller's 'The Last Yankee' at Bolton Library's Lecture Theatre.

The Lecture Theatre will be temporarily renamed The Library Theatre during its role staging the professional play. It will undergo some temporary, reversible, modifications to make it suitable for a high- quality theatre production. There will be no changes to the fabric or décor of the lecture theatre and all the modifications are designed so that the auditorium can easily revert back to its original design.

Professor Thacker, is head of the BA (Hons) Theatre and Performance Degree at the University of Bolton and former artistic director of Bolton's Octagon Theatre.

The Last Yankee tells the story of two men visiting their wives in a psychiatric hospital. Patty and her carpenter husband Leroy are struggling to make ends meet as they try to make a home for their

seven children. Wealthy businessman John Frick cannot understand why his wife Karen, "who has everything she could possibly want", has inexplicably "lost all her optimism".

Prof Thacker and playwright Miller – famous for works such as Death of a Salesman, A View from the Bridge and The Crucible – forged a close professional and personal friendship.



## The play runs until 16 March 2019.

Tickets are available from the Octagon website, by calling **01204 520661**, or from the temporary box office at the Market Place Shopping Centre.

- Join us for our next Bollywood film screening on Thurs 28 March at 6.30pm. Admission is free, suitable for age 16+ and no need to book.

# The Octagon re-imagined



Performances are being taken out on the road as building work continues to the new Octagon Theatre.

Following the success of *The Wizard of Oz* at the University of Bolton Stadium the theatre will bring Oscar Wilde's 'The Importance of being earnest' to the Albert Halls.

The current building is being enlarged and modernised to improve accessibility and accommodation for the theatre's on and off-stage projects. This involves demolishing large sections of the building and rebuilding around the core of the theatre's auditorium.

At the heart of the new building will be the theatre's intimate flexible

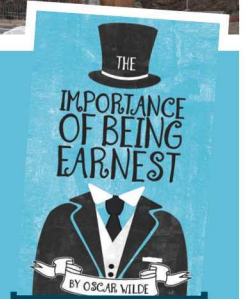
auditorium as well as two multi-purpose studio spaces for rehearsals, participation activities and performances, and new, revamped café and bar areas.

Roddy Gauld, Chief Executive of the theatre said "It's great to see such progress being made on the building works. Following the demolition work, what currently remains is pretty much the original 1967 structure. The groundworks are one of the least seen but most complicated phases. Now the ground is being prepared for new foundations for the new build to commence, which will wrap-around the original theatre and create a larger, more modern Octagon."



## The Importance of Being Earnest

Oscar Wilde's sensational and lavish tale of witty comedy is brought to life at Bolton's Albert Halls.



Bachelors and best friends Jack and Algernon create alter egos to escape their tiresome lives. However when they both fall in love and attempt to win the hearts of two women the pair become tangled in a tale of deception, disguise and misadventure.

A Victorian satire on social obligations, *The Importance of Being Earnest* is heralded as one of the funniest plays ever written and has delighted audiences for over 100 years. Octagon Theatre Bolton present *The Importance of Being Earnest* by Oscar Wilde at the Albert Halls Bolton, Thu 6 – Sat 15 June.

Tickets available online from [octagonbolton.co.uk](http://octagonbolton.co.uk) or in person from the Market Place Shopping Centre.



# Helping to plan for Farnworth's future

Residents, businesses and organisations have had their say about new plans to regenerate Farnworth town centre.

At the end of last year the council consulted about the town centre masterplan.

New proposals include creating new homes, opening a new community hub in the heart of the town centre, and improving connectivity to Farnworth Park.

Other suggestions include exploring alternative uses for publicly owned buildings and bringing library services into the heart of the town centre.

The initial concepts have been drawn up by urban regeneration specialists BDP.

The original designs followed six months of community engagement with residents, councillors, businesses and partners to understand the needs and wishes of the local community.

The findings will be used to shape a final masterplan document later this Spring.

## Farnworth focus

People were asked about several key areas to develop the masterplan

- Redevelopment of the market precinct
- New community and civic hub possibly to include library, council services / offices, improved health facilities, community forum and a café
- New housing development around the town centre on council and privately-owned land
- Extending the leisure centre
- Moving the library to a new building
- Improving the public spaces on Cross Street and Gas Street and make them more pedestrian friendly



READ MORE AT...  
[www.bolton.gov.uk](http://www.bolton.gov.uk)

# Tackling substance misuse

An innovative approach to tackling substance abuse in Bolton is helping transform communities and rebuild lives.

Achieve Bolton, an alcohol and drug recovery programme, launched last year has already made a real difference in the lives of people struggling with addiction.

Like other areas in Greater Manchester, Bolton faces a

*"In Bolton we take pride in working together to solve problems and help others. This collaborative approach, with the help of our incredible volunteer sector, marks a new beginning for drug and alcohol services in our town."*

- Bolton Council leader, Cllr Linda Thomas

number of challenges when it comes to substance abuse.

The most at risk are drug users with a long history of dependency, but who have never been in any form of treatment programme.

In order to reach this most

vulnerable group trained professionals go out and speak with people in the community who may have never been offered access to traditional services before.

Donna Turner, manager of Achieve's assertive outreach team, said:

"Many of the people we support have complex and difficult lifestyles. Their substance misuse is often one of many issues that are having a negative impact on their lives, including homelessness.

"Recently, the team have carried out walkabouts in the town centre identifying individuals who need support at the drop in.

"We actively engage with people across the community in their homes, in hospital and on the streets.

"In Bolton, this work has included making strong links with services who work with

individuals to address issues that can lead to homelessness.

"We work together to address physical health problems, drug and alcohol misuse, debt management, social isolation and help people work towards gaining a tenancy."

Achieve is run by Greater Manchester Mental Health NHS Foundation Trust (GMMH) on behalf of Bolton Council.

Its proven approach has seen great success in Salford where the service has been rated "outstanding" by the Care Quality Commission.

Achieve Bolton hopes to build on the work of the town's previous drug and alcohol service providers by delivering joined-up treatment that addresses both substance abuse and mental health problems.



Achieve's assertive outreach team can be contacted on **0161 226 5412** or **[www.thebiglifegroup.com/achieve](http://www.thebiglifegroup.com/achieve)**

Achieve Bolton can be contacted on **01204 483090** or **[www.gmmh.nhs.uk/achieve](http://www.gmmh.nhs.uk/achieve)**



# Youngsters get good start in life

A newly refurbished children's centre will spring to life later this year following an investment of nearly half a million pounds.

After months of renovation work, Farnworth Children's and Young People's Centre is set to open its doors in summer 2019.

In total, £478,000 has been invested in the centre as part of a wider scheme to improve the support available to families across Bolton.

Bolton Council's Start Well Service includes Early Years services and 0-19s support services for children and families.

Early Years, Connexions, Play and Youth, as well as some health services will be run out of the new centre, based in King Street.

The renovated building features new play areas, a family room, a children's nursery, a multi-purpose

activity room as well as health rooms, a pram store and a reception area.

Available services and activities will include 'stay, play and learn' sessions, antenatal and Well Baby Clinics, parenting support, and community-led activities.

Health Visitors from Farnworth Health Centre will also move into the centre.

As well as baby clinics and oral health drop-ins, appointments will be available to see community midwives, Health Visitors and other specialist health services.

Executive Cabinet Member for People's Services, Cllr Ann Cunliffe, said:

"The new look Farnworth Children's and Young People's Centre will be a welcome boost to the community.

"From the start, it was important that we listened to what young people in the area wanted from the centre and they have been at the heart of the plans.

"We've received some very positive feedback already and I'm sure the centre will become an integral part of community life in Farnworth.

"As a council, we are committed to making sure all our young people get the best possible start in life and the Start Well service has a key role to play in this.

"The new Farnworth

centre is just one part in a package of investment to ensure the most disadvantaged and vulnerable young people get the support they need."

Refurbishment work is now underway by Bolton-based Seddon Construction. John Sharman, Property Services Director said: "We're thrilled to be part of this project, helping transform the centre's lobby, recreation and car park."



READ MORE AT...  
[www.bolton.gov.uk](http://www.bolton.gov.uk)



# Kearsley support for young people

Young people with learning disabilities will get a new chance to study with the opening of a new centre in Kearsley.

The former Kearsley Children's Centre will become a specialist college offering study and training.

During the creation of a new centre in Farnworth, Start Well Services have been operating out of the facility.

That building will now be leased to Woodbridge College, a specialist training organisation for young people with learning difficulties, which has committed to keeping valuable community services in Kearsley.

The college will work with Bolton Council's Start Well team to continue early years services and other activities.

There are also plans to open a community café to allow learners to gain supported work experience in catering, hospitality and business administration.

Sally McFarlane, Executive Headteacher at Woodbridge Academy Trust, said:

"Basing our college at this site provides a fantastic opportunity to offer a wide range of college experiences for the students including the chance to support some of the existing community-based activities which are already offered by the centre.

"We look forward to working in partnership with the council to ensure that the use of this building brings mutual benefit for both our students and the community it serves."

Executive Cabinet Member for Peoples' Services, Cllr Ann Cunliffe added: "Woodbridge College is an ideal choice to be the custodians of Kearsley Children's Centre.

"I am delighted that early years services will continue at the site as well as other activities that I'm sure will add real value to the local community.

"Together with the newly refurbished Sure Start hub in Farnworth, families in this part of the borough will be well supported to ensure their children get the best possible start in life."



READ MORE AT...  
[www.bolton.gov.uk](http://www.bolton.gov.uk)





# Public backs new town centre powers

New powers to curb antisocial behaviour in Bolton town centre will officially come into force later this year.

More than 260 organisations and individuals had their say on proposals to create a Public Spaces Protection Order (PSPO).

The order will grant council officers and Greater Manchester Police additional powers to clamp down on certain behaviours, making the town centre a safer and more enjoyable place for everyone.

Of the responses collected during a six-week consultation period, the vast majority agreed that

more needs to be done to tackle issues including aggressive begging and open drug use.

The PSPO will also create extra powers to clamp down on graffiti, soliciting for money and cycling in pedestrianised areas.

Once the order is in force, enforcement will be carried out by trained council officers and Greater Manchester Police.

A PSPO lasts for three years and failure to comply with an order can result in a fixed penalty notice of up to £100 or prosecution.

*“We are working alongside the council and our partners to help those in need to get the support they need and reduce antisocial behaviour. However, there will be occasions when partner and police enforcement is deemed necessary to make the town centre a safer place for everyone.”* - Chief Inspector Mike Russell from GMP’s Bolton district

**Executive Cabinet Member for Environmental Services, Cllr Nick Peel said:** “The feedback shows the public are behind plans to improve our town centre and make it a more welcoming place to work, visit and shop.

“Openly drinking and taking drugs is not acceptable and we will work closely with the police to tackle this issue.

“We will also work with the assertive outreach team from our drug and alcohol service Achieve to identify those in need of support to overcome addiction and substance abuse issues.

“We know from speaking to businesses and the public that aggressive begging has become a problem in Bolton.

“While many people may associate street begging with homelessness, the reality is that in Bolton town centre the majority of those who engage in begging activity have access to accommodation.

“Those looking to exploit the generosity of the people of Bolton will not be tolerated.

“Together with our partners in Bolton’s excellent homelessness charities we will ensure appropriate support is given to the genuinely vulnerable.”

*“Some individuals have very complex needs and we are absolutely committed to helping and supporting them. Unfortunately aggressive beggars are not usually those who are willing to engage with support services and usually they are not those who are most in need. The begging can mask another need but we know from our extensive outreach work that the issue is not usually lack of a roof.”* - Dave Bagley, Chief Executive of Urban Outreach

# Volunteer to make a real difference



---

Health providers in Bolton are searching for volunteers to help improve services and deliver the best possible care for local patients.

---

The Lived Experienced Panel is your opportunity to share the experiences and ideas that could make a real difference in our community.

The panel, set up by Bolton NHS Foundation Trust, the Clinical Commissioning Group and the council, is now recruiting new members.

To take part, you must have recent experience of health or social care system either as a patient, a family member or a carer.

Successful applicants will help to make decisions, shaping the way local services work and influencing future plans.

The initiative is part of an ongoing commitment to improve health and social care in Bolton and ensure that patients and their families are listened to.

Members will work alongside the council and the NHS when it comes to designing services, to make sure health and social care focuses on the person.

Panellists commit half a day each week to attend meetings, engage with service users and take an active role in quality improvement.

The panel's work is designed to reflect the diverse experiences of Bolton residents, regardless of their background.

New panel members will receive training to develop their leadership, influencing and decision-making skills.

Panellist will be assigned a mentor and will benefit from structured support, an understanding working environment and will have reasonable expenses covered.

Panellist Michelle Lane wants to address some of the shortcomings in the health and social care system that she experienced after a relative suffered a brain injury.

"I want to try and help change that, so it doesn't continue to happen to other families," she said.

"I very much enjoy it and the people I have

met through it are very supportive. It's as flexible as you need it to be. I work part time, I have a young family and it still fits around all of those things."

Joanne Street, Integrated Community Services Division at the foundation trust, said:

"The Bolton Lived Experience Panel is an important part of our commitment to including people in our improvement and transformation plans across health and social care.

"We are extremely pleased to welcome our first panel members and we would welcome further applications from people who have an interest in helping us to improve the quality of our services."

Bolton Council Leader, Cllr Linda Thomas, said:

"Services should always be designed and improved around the people and families that use them. The volunteer panel is an essential part of doing that.

"Individual experiences and perspectives can offer vital insights into the way these services perform and what could be done better.

"Not only do volunteers offer fresh insights but they bring with them unique skills and a wealth of experiences from all walks of life.

"We want a real and honest discussion about what works and what doesn't so please consider volunteering. We want to build a better system for all of us."

For more information about the Lived Experience Panel, contact Vicky Walton on **01204 463 418** or email **vicky.walton@boltonft.nhs.uk**

# Bolton in brief...



## New restaurant on the menu

**Top quality cuisine is on the menu for the Albert Halls as Heathcote's new restaurant opens later this year.**

The new eatery will be sited in the former Dido suite dining hall at the entrance to the Albert Halls.

The catering partnership between the Albert Halls and Heathcote&Co will run for 10 years. The plan is for the eatery to include traditional Northern dishes

but the final look, feel and tastes on offer at the restaurant will be revealed more as the project develops.

Paul Heathcote said: "Bolton is my hometown, and The Albert Halls is a fabulous newly refurbished venue. We look forward to working closely with everybody at the council, the business community and further afield to really drive the hospitality into the town centre again."



↑ Pictured are Tony Oakman, Chief Executive of Bolton Council; Paul; Cllr Linda Thomas, and Gary Bates, Heathcote's Director

## Parliament gives warm reception to energy hero



**Shakeel Ahmed from Bolton Council's Money Skills team was named a national Heat Hero at a special awards ceremony at the Houses of Parliament.**

The Heat Heroes Awards celebrate those who go above and beyond to help people live in warmer homes.

Since 2015, Shakeel has helped more than 300 people to save an average of £160 each by providing money saving tips and helping customers switch suppliers. One customer saved £1,000 thanks to Shakeel's help.

**For information about how the Money Skills Service can help you, go to:**

web: [www.boltonsmoneyskills.org.uk](http://www.boltonsmoneyskills.org.uk)

e-mail: [moneyskills@bolton.gov.uk](mailto:moneyskills@bolton.gov.uk)

[@BoltonMoney](https://www.facebook.com/BoltonMoney)

[@BoltonsMoneySkills](https://twitter.com/BoltonsMoneySkills)

## 'Good' Ofsted for adult and community education

**Bolton Council and Bolton College are celebrating after the town's adult and community learning provision was graded as 'good' in its recent Ofsted inspection.**

The provision, which is delivered by Bolton College, was graded 'good' by Ofsted in every category: Leadership and Management; Teaching, Learning and Assessment; Personal Development, Behaviour and Welfare; Outcomes for Learners; and Adult Learning Programmes.

Ofsted praised the council and college for engaging and enthusing learners, with more than 2500 adults attending a range of courses last year and many going on to get a job, gain a qualification, progress to university and benefit from self-development.

Courses are delivered at the college's main Deane Road campus and community learning centres at Brownlow Fold in Halliwell, Deane & Derby and New Bury in Farnworth.

# Meet your councillors...

## ASTLEY BRIDGE

**Con** Hilary Fairclough  
01204 336343 or 07814378406  
hilary.fairclough@bolton.gov.uk

**Con** John Walsh 01204 332216,  
840118, 07836 363635  
john.walsh@bolton.gov.uk

**Con** Paul Wild  
01204 591824 or 331957  
paul.wild@bolton.gov.uk

**Surgeries:** Fri 29 Mar, Fri 26 Apr, 6-7pm  
at Drummond St Community Centre

## BRADSHAW

**Con** Mudasir Dean  
01204 336493  
mudasir.dean@bolton.gov.uk

**Con** Stuart Haslam  
01204 385096  
stuart.haslam@bolton.gov.uk

**Con** Jackie Radcliffe  
07935 835771  
jacqueline.radcliffe@bolton.gov.uk

**Surgeries:** Fri 29 Mar and Fri 26 Apr,  
6.30-7.30pm at Harwood Methodist  
Church Hall, Longsight

## BRIGHTMET

**Lab** John Byrne  
01204 337878 / 07917072264  
john.byrne@bolton.gov.uk  
**Surgeries:** Every Mon, 5.30-6.30pm,  
please contact for an appointment

**Ind** Debbie Newall 07392 108252  
debbie.newall@bolton.gov.uk  
**Surgeries:** Tue 5 Mar and Tue 2 Apr,  
Brightmet Library, Brightmet Health  
Centre, Brightmet Fold Lane - please  
ring for an appointment

**Con** Adele Warren 07824541315  
adele.warren@bolton.gov.uk  
**Surgeries:** Please contact for details

## BROMLEY CROSS

**Con** Norman Critchley  
01204 594311  
norman.critchley@bolton.gov.uk

**Con** David Greenhalgh  
01204 335621 / 07813 386415  
david.greenhalgh@bolton.gov.uk

**Con** Nadim Muslim  
nadim.muslim@bolton.gov.uk

**Surgeries:** Please contact for details

## CROMPTON

**Lab** Hanif Darvesh  
0771 5048806 / 01204 336195  
hanif.darvesh@bolton.gov.uk

**Lab** Guy Harkin  
01942 811932 / 01204 336256  
guy.harkin@bolton.gov.uk

**Lab** Bilkis Ismail  
07766 443052  
bilkis.ismail@bolton.gov.uk

**Surgeries:** Please contact for details

## FARNWORTH

**F K F** Maureen Flitcroft  
07387250962  
maureen.flitcroft@bolton.gov.uk  
**Surgeries:** Sat 16 Mar and Sat 20 Apr,  
10.30am-12.30pm at Farnworth Town Hall  
(access via the back entrance)

**Lab** Jean Gillies 01204 332131  
jean.gillies@bolton.gov.uk  
**Surgeries:** Sat 6 Apr, 10.30-11.30am  
at Farnworth Town Hall (access via the back entrance)

**F K F** Paul Sanders 07936 084393  
paul.sanders@bolton.gov.uk  
**Surgeries:** Sat 16 Mar and Sat 20  
Apr, 10.30am-12.30pm at Farnworth Town  
Hall (access via the back entrance)

## GREAT LEVER

**Lab** Mohammed Ayub  
07838 119522  
mohammed.ayub@bolton.gov.uk

**Lab** Mohammed Iqbal  
01204 335620  
mohammed.iqbal@bolton.gov.uk

**Lab** Madeline Murray  
01204 694092  
madeline.murray@bolton.gov.uk

**Surgeries:** Tue 19 Mar and Tue 16  
Apr, Park Lodge, Green Lane 5-6pm

## HALLIWELL

**Lab** Cliff Morris  
01204 336329 / 01204 331094  
cliff.morris@bolton.gov.uk

**Lab** Linda Thomas  
01204 332090 / 07879 891129  
linda.thomas@bolton.gov.uk

**Lab** Akhtar Zaman  
07980 962826  
akhtar.zaman@bolton.gov.uk

**Surgeries:** Sat 6 Apr, 10.30-11.30am  
at Halliwell UCAN Centre, Hatfield Rd

## HARPER GREEN

**Lab** Susan Haworth 07415509103  
susan.haworth@bolton.gov.uk  
**Surgeries:** Fri 29 Mar, 26 Apr noon-1pm,  
Tue 19 Mar, 16 Apr 4.30-5.30pm One Stop  
Shop, Bolton Town Hall. Fri 5 Apr, 12.30-  
1.30pm The Community Room, Windsor  
Court, Holmeswood Rd

**Lab** Hamid Khurram 07388857888  
hamid.khurram@bolton.gov.uk  
**Surgeries:** Tue 19 Mar, 16 Apr 4.30-  
5.30pm One Stop Shop, Bolton Town Hall

**Lab** Champak Mistry  
01204 397522 or 331320  
champak.mistry@bolton.gov.uk  
**Surgeries:** Please contact for details

## HEATON & LOSTOCK

**Con** Robert Allen  
01204 451341 / 01204 335096  
robert.allen@bolton.gov.uk

**Con** Anne Galloway  
07388857892  
anne.galloway@bolton.gov.uk

**Con** Andrew Morgan  
01204 331019  
andrew.morgan@bolton.gov.uk

**Surgeries:** Please contact at area forum  
meetings or contact direct

## HORWICH & BLACKROD

**Con** Susan Baines 07388857902  
susan.baines@bolton.gov.uk  
**Surgeries:** Sat 9 Mar, Sat 13 Apr, 10-11am  
Horwich Library. Sat 16 Mar, Sat 20 Apr,  
10-11.30am Blackrod Library

**Lab** Ann Cunliffe 01204 332375  
ann.cunliffe@bolton.gov.uk  
**Surgeries:** Sat 9 Mar, Sat 13 Apr, 10-11am  
at Blackrod Library. For issues in Horwich please  
contact me for an appointment

**Lab** Stephen Pickup 01204 337078  
stephen.pickup@bolton.gov.uk  
**Surgeries:** Sat 6 Apr, 9.30-10.30am  
Horwich Library and Sat 9 Mar, Sat 13 Apr,  
10-11am Blackrod Library

## HORWICH NORTH EAST

**Lab** Joyce Kellett  
joyce.kellett@bolton.gov.uk  
**Surgeries:** Please contact for details

**Lab** Kevin McKeon 01204 692115  
kevin.mckeon@bolton.gov.uk  
**Surgeries:** Sat 6 Apr, 10-11am at  
Horwich Library

**Lab** Richard Silvester  
01204 467914  
richard.silvester@bolton.gov.uk  
**Surgeries:** Please contact for details

## HULTON

**Con** Toby Hewitt 07857 649806  
toby.hewitt@bolton.gov.uk  
**Surgeries:** Sat 9 Mar and Sat 13 Apr,  
9-10am at Bolton South Salvation Army  
Church and Community Centre, Aldred St

**Con** Diane Parkinson 07799592604  
diane.parkinson@bolton.gov.uk  
**Surgeries:** Sat 9 Mar and Sat 13 Apr,  
9-10am at Bolton South Salvation Army  
Church and Community Centre, Aldred St

**Lab** Shafaqat Shaikh 07775007853  
shafaqat.shaikh@bolton.gov.uk  
**Surgeries:** Please contact for details

## KEARSLEY

**UKIP** Mark Cunningham  
07580036509  
mark.cunningham@bolton.gov.uk  
**Surgeries:** Please contact for details

**Lab** Liam Irving 07824363013  
liam.irving@bolton.gov.uk  
**Surgeries:** Sat 9 Mar, Sat 13 Apr, 10.30-  
11.30am Kearsley Mount Cottage, St Johns  
Fishers

**F K F** Julie Pattison 07388857903  
julie.pattison@bolton.gov.uk  
**Surgeries:** Sat 6 Apr, 10.30am-12.30pm,  
St Stephen's Church. Sat 16 Mar, Sat 20  
Apr, 10.30am-12.30pm Farnworth Town Hall  
(use rear door)

## LITTLE LEVER & DARCY LEVER

**Lab** David Evans 07969356164  
david.evans@bolton.gov.uk  
**Surgeries:** Please contact for details

**UKIP** Rees Gibbon  
07738 493122  
rees.gibbon@bolton.gov.uk

**UKIP** Sean Hornby  
07583 725578  
sean.hornby@bolton.gov.uk

**Surgeries:** Tue 5 Mar, Tue 19 Mar  
10-11am Little Lever Library. Sat 30 Mar,  
Sat 6 Apr 10-11.30am Tesco, Little Lever

## RUMWORTH

**Lab** Shamim Abdullah 07392108236  
shamim.abdullah@bolton.gov.uk  
**Surgeries:** Sat 6 Apr, 10am-12pm at  
High St Library. To arrange an  
appointment please call or email

**Lab** Dr Ebrahim Adia 01204 332371  
ebrahim.adia@bolton.gov.uk  
**Surgeries:** Please contact for details

**Lab** Ismail Ibrahim 01204 337636  
ismail.ibrahim@bolton.gov.uk  
**Surgeries:** Please contact for details

## SMITHILLS

**Lib** Douglas Bagnall  
07810834658  
doug.bagnall@bolton.gov.uk

**Lib** Roger Hayes  
01204 841008  
roger.hayes@bolton.gov.uk

**Other** Carole Swarbrick  
01204 492967  
carole.swarbrick@bolton.gov.uk

**Surgeries:** Sat 16 Mar, 10-11am The Parish  
church of St Margaret's Halliwell, St Margaret's  
Close, (Lonsdale Rd), Weds 17 Apr, 7.30-8.30pm  
at The Hope Centre, 27 Tattersall Ave

## TONGE WITH THE HAULGH

**Lab** Martin Donaghy  
01204 336239  
martin.donaghy@bolton.gov.uk

**Lab** Nicholas Peel  
01204 459949  
nicholas.peel@bolton.gov.uk

**Lab** Elaine Sherrington  
01204 391092  
elaine.sherrington@bolton.gov.uk

**Surgeries:** Mon 4 Mar and Mon 8  
Apr, 6-7pm, at Tonge UCAN centre.  
Please contact for an appointment

## WESTHOUGHTON NORTH & CHEW MOOR

**Con** Martyn Cox 01204 331190  
martyn.cox@bolton.gov.uk  
**Surgeries:** Sat 9 Mar, Sat 27 Apr, 10.30-  
11.30am at Westhoughton Town Hall

**Con** Zoe Kirk-Robinson  
01204 331020  
zoe.kirk-robinson@bolton.gov.uk  
**Surgeries:** Sat 6 Apr, 10.30-11.30am at  
Westhoughton Town Hall

**Con** Christine Wild 07977 516192  
christine.wild@bolton.gov.uk  
**Surgeries:** Sat 30 Mar, 10.30-11.30am at  
Westhoughton Town Hall

## WESTHOUGHTON SOUTH

**Lab** David Chadwick 01942 818526  
david.chadwick@bolton.gov.uk  
**Surgeries:** Sat 13 April, 10.30-11.30am at  
Westhoughton Town Hall

**Lib** David Wilkinson 01942 819456  
david.wilkinson@bolton.gov.uk  
**Surgeries:** Please contact for details

**Lab** Anna-Marie Watters  
01204 335516  
anna-marie.watters@bolton.gov.uk  
**Surgeries:** Sat 23 March, 10.30-11.30am  
at Westhoughton Town Hall



# Try-umphant: Rugby League World Cup success

The Rugby League World Cup 2021 is heading to Bolton with the borough confirmed among the hosts of the prestigious tournament.

It follows a high-profile campaign led by Bolton Council and supported by Bolton Wanderers, Bolton Whites Hotel, the University of Bolton, Ideal Corporate Solutions Ltd, and a host of businesses, organisations and sports clubs including Bolton Mets, Westhoughton Lions and Salford Reds.

The University of Bolton Stadium will host a significant group stage game, featuring England, and a quarter final match during the Rugby League World Cup 2021.

The tournament has the potential to bring £4.5m into Bolton's economy.

Bolton Council's Executive Cabinet Member for Culture and Sport, Cllr John Byrne, said: "This is amazing news. To have been successful in our bid shows what faith the Rugby League has in Bolton and its facilities.

"This was a real Team Bolton effort and I would like to thank everyone who got involved and supported the campaign.

"Bringing the Rugby League World Cup to Bolton will give local

people the chance to see an exciting sport up close and give our town an international profile."

Bolton Council Leader, Cllr Linda Thomas, added: "We are delighted to be hosting games and a team as part of the Rugby League World Cup 2021.

"The tournament will provide a unique opportunity to boost Bolton's economy and get our communities involved in sport.

"We know from the success of events like Ironman that Bolton has the ability to deliver on huge sporting spectacles.

"This will also highlight the region and Bolton at its best to visitors, players and spectators from around the world."

The RLWC2021 will

*"The tournament will provide a unique opportunity to boost Bolton's economy and get our communities involved in sport"*

see 32 teams playing 64 games across 20 venues and it is expected to be the biggest Rugby League World Cup, watched worldwide by an estimated 150 million people across 115 countries.





**BEESLEY & FILDES LTD**  
Builders, Plumbers, Roofing and Timber Merchants

# WALKDEN

FORMERLY KNOWN AS

**CSS BUILDERS MERCHANTS**

## WHAT WE HAVE TO OFFER...

- Family owned independent Builders Merchant established since 1820 •
  - Over 50 delivery vehicles •
  - Extensive Landscaping & Block paving display •
- Brick match service and Brick library with over 1.5 million bricks in stock •
  - Brick cutting and bonding service •
  - Architectural Masonry & Natural Stone •
  - Concrete & Steel Lintels •
  - Gas Membrane & Tanking Systems •
- Drylining and Insulation specialist department •
  - Civils, Drainage and Groundwork products •
  - Parex external Render systems •
  - Quality Timber for indoor and outdoor use •
- Truss, I-Beam, Posi Joist & Engineered flooring design service •

**LOUISA ST  
WALKDEN  
MANCHESTER  
M28 3GA**



**MONDAY - FRIDAY**  
8.00am - 5.00pm  
**SATURDAY**  
8.00am - 12 Noon  
**SUNDAY**  
Closed



Reg No. 2412526 England



0161 713 1200



walkden@beesleyandfildes.co.uk



www.beesleyandfildes.co.uk

# HORWICH CIVIC EVENTS 2019

## TEMPORARY ROAD CLOSURES AND RESTRICTIONS

THE BOROUGH COUNCIL OF BOLTON

ROAD TRAFFIC REGULATION (SPECIAL EVENTS) ACT 1994

THE BOLTON (CIVIC EVENTS HORWICH) (TEMPORARY CLOSURES, SUSPENSIONS AND PROHIBITION OF WAITING) (NO.11) ORDER 2019

**The Council intends to make an order which will enable the following events to take place in Horwich on dates as indicated:**

### RIVINGTON PIKE FELL RACES

Between approximately 2pm and 4.30pm on Saturday 20 April, Lever Park Avenue will be closed from Scholes Bank to Dryfield Lane.

The alternative route for traffic will be: Scholes Bank - Dryfield Lane.

### A DAY FOR ST GEORGE

Between approximately 11am and 2.30pm on Saturday 20 April, Brownlow Road will be closed from Lee Lane for approximately 30m in a north-easterly direction (the area of carriageway adjacent to the Saddle Public House).

The alternative route for traffic will be: Longworth Road, Beaumont Road.

### HORWICH FESTIVAL OF RACES

Between approximately 2pm and 11pm on Saturday 15 June, the following roads will be closed:

Lee Lane for its entire length,  
Winter Hey Lane for its entire length,  
Church Street between Winter Hey Lane and Victoria Road,  
Chorley New Road between Scholes Bank and Winter Hey Lane,  
Harrison Street for its entire length.

Between 8am and 6pm on Sunday 16 June the following roads will be closed:

Lee Lane for its entire length,  
Winter Hey Lane for its entire length,  
Chorley New Road between Scholes Bank and Winter Hey Lane.

Between 7am Saturday 15 June and 6pm Sunday 16 June the following roads will be closed:

Jones Street, St John Street & New Brunswick Street for their full lengths

In addition:

(a) the 7.5 tonne weight restriction limit except for access will be suspended, on Mason Street between Chorley New Road and Vale Avenue; on Vale Avenue between Mason Street and Crown Lane; on Crown Lane between Chorley New Road and Station Road; on Station Road between Crown Lane and the A6 Blackrod By-Pass.

(b) there will be a temporary prohibition of waiting restriction established on Crown Lane west side from Chorley New Road for 25 metres in a southerly direction; east side from Chorley New Road to 15m south of Vale Avenue; on Vale Avenue both sides from Crown Lane to Mason Street; on Mason Street south side from Vale Avenue to 50m west of Greenstone Avenue; and on Mason Street north side from 60m west of Tomlinson Street to Vale Avenue; Scholes Bank, south side from its junction with Chorley new Road to its junction with Lever Park Avenue.

The alternative route for traffic will be:

Victoria Road, Chorley New Road, Mason Street, Vale Avenue, Crown Lane, Scholes Bank.

### HORWICH CARNIVAL PROCESSION

Between approximately 11am and 2pm on Sunday 23 June, the following roads will be closed:

Chorley Old Road between Stocks Park Drive & Church Street,  
Church Street between Chorley Old Road and Lee Lane,  
Lee Lane for its entire length,  
Chorley New Road (south-east bound) between Scholes Bank and Ramsbottom Road,  
Ramsbottom Road for its entire length,  
Victoria Road between Ramsbottom Road and Church Street.

In addition, the 7.5 tonne weight restriction limit except for access will be suspended on Stocks Park Drive between Victoria Road and Chorley Old Road / Church Street.

The alternative route for traffic will be:

(a) North-west bound – Stocks Park Drive, Victoria Road, Chorley New Road.  
(b) East bound – (phase one) Scholes Bank, Chorley New Road, Victoria Road, Stocks Park Drive.  
(c) East bound – (phase two) Scholes Bank, Lee Lane, Church Street, Chorley Old Road, Stocks Park Drive.

During the period of each event all vehicles not directly engaged in the event will be prohibited from entering, proceeding, stopping, standing and waiting in lengths of roads affected.

Street notices will be published prior to each event and this Order will only be operative during the times and on the days specified above in respect of each individual event.

Bolton Council.

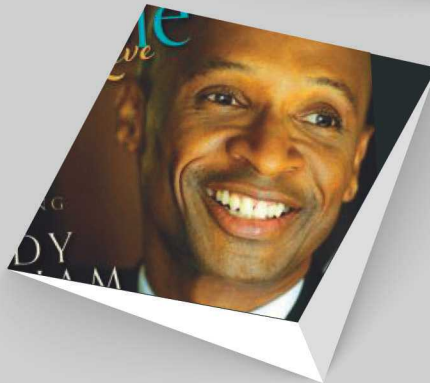
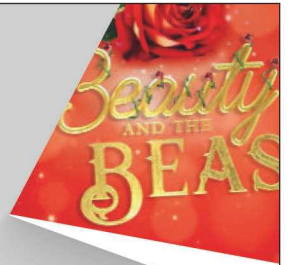
4 March 2019.

[www.bolton.gov.uk/trafficorders](http://www.bolton.gov.uk/trafficorders)

# What's On 2019

## Ones to watch this spring...

- ▶▶ **An Audience with Kim Woodburn**  
Sat 30th March 2019
- ▶▶ **Beauty & the Beast**  
Mon 15th – Tues 23rd April
- ▶▶ **Something About Simon**  
Sat 27th April
- ▶▶ **Nat King Cole featuring  
Andy Abraham**  
Sat 11th May
- ▶▶ **Leo Sayer**  
Tues 14th May
- ▶▶ **There was an old lady who  
swallowed a fly**  
Fri 31st May



Visit the Albert Halls website for more details [www.alberthalls-bolton.co.uk](http://www.alberthalls-bolton.co.uk)



@AlbertHallsBTN



@AlbertHallsBolton



AlbertHallsBolton

**Albert  
Halls**  
Bolton