



Our journey

Area Profile: Chorley Roads





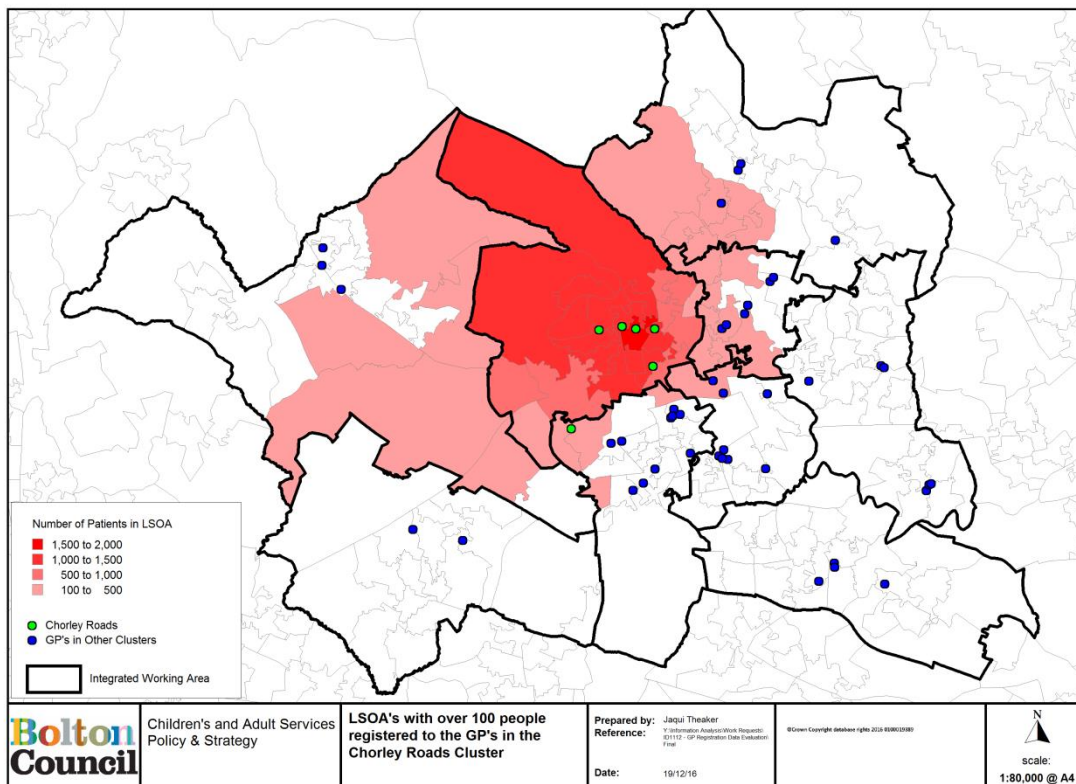
Area Profile: Neighbourhood North West: Chorley Roads

Introduction

The aim of this profile report is to give a demographic overview of each GP Cluster Neighbourhood.

The present report is for the West neighbourhood of Chorley Roads which is made up from the following GP practices:

- P82010 – Dalefield Surgery
- P82627 – Cornerstone Surgery
- P82014 - Spring House Surgery
- P82031 – Heaton Medical Centre
- P82634 – Wyresdale Road Surgery



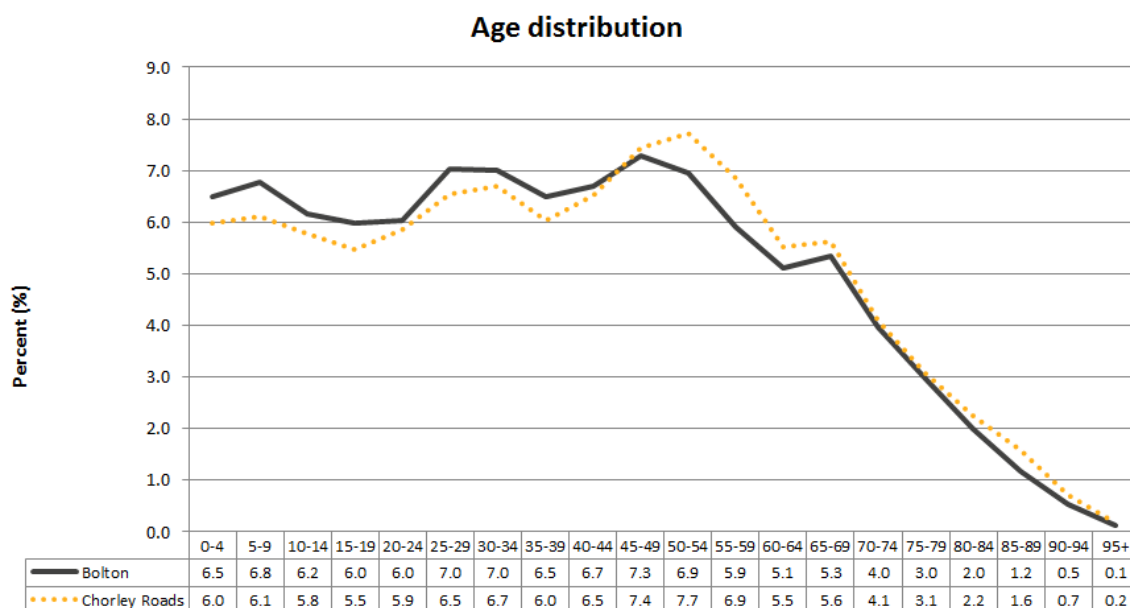
Population



Bolton’s total population is set to increase by around 12% or around 33,000 people by 2035. Although the borough is set to gain approximately 30,000 people, it is projected that Bolton will lose around 14,000 residents who will move elsewhere in the UK. The borough is projected to experience a marginally higher birth rate than the national average¹.

The proportion of children in Bolton is slightly higher than the average for Greater Manchester and England. In 2011, 25.8% of the population were aged 0-19, with 6.8% of these being 0-4 years. Population projections for Bolton suggest that the number of dependent children will increase by 17% between 2010 and 2035.

There are currently around 32,300 patients within the Chorley Roads neighbourhood registered at one of their practices, with Heaton Medical Centre having a list size of around 10,400, Spring House Surgery having 7,220, Dalefield Surgery having 5,570, Wyresdale Road Surgery having 4,070, and Cornerstone Surgery having 4,040 patients².



Taken as a whole Chorley Roads neighbourhood has a slightly older list than is average for Bolton practices; 18% of patients are aged 65 compared to 16% across Bolton, ranging from 13% in Cornerstone Surgery to 22% in Spring House Surgery.

¹ Bolton’s Health Matters (Starting Well) - <http://www.boltonshealthmatters.org/>

² National General Practice Profiles - <http://fingertips.phe.org.uk/PROFILE/GENERAL-PRACTICE>





Resident population by key Census age groups						
Age	Dalefield Surgery	Cornerstone Surgery	Spring House Surgery	Heaton Medical Centre	Wyresdale Road Surgery	Chorley Roads neighbourhood
0-4 years	471	270	369	591	233	1,934
5-14 years	789	473	738	1,318	523	3,841
Under 19 years	1,557	977	1,470	2,528	1015	7,547
65+ years	1,085	545	1,609	1,847	567	5,653
75+ years	486	222	653	898	249	2,508
85+ years	150	73	167	333	70	793

Around 6.9% of households within the neighbourhood are living in overcrowded circumstances – this is typical for Bolton (6.9%) but lower than the national average (8.7%) and much lower than the most overcrowded area in Bolton (17.7%). A fairly average proportion (3.6%) of households in the area do not have central heating, but in many areas of Bolton almost 100% of households have central heating. Furthermore, over a third (36.1%) of all pensioners within the neighbourhood live alone. Finally, within the neighbourhood 870 people are currently providing 50 or more hours of unpaid care.

Tenure in Chorley Roads closely follows the pattern of the town overall but with a lower proportion of social rented and slightly higher proportions of owned outright and private rented properties.

Tenure (%)		
	Chorley Roads	Bolton
Owned outright	34.2	30.6
Owned with a mortgage or loan or shared ownership	33.0	33.8
Social rented	15.2	20.5
Private rented or living rent free	17.5	15.2

Deprivation and economic activity

Known inequalities persist across the socioeconomic gradient of Bolton with older people living in the most deprived areas being more likely to develop long-term conditions, to rely on Adult Social Care, and to have more emergency admissions in their old age. There are 34 Lower Super Output Areas (LSOAs) in Bolton which rank in the most deprived 10% such areas in the country according to the Index of Multiple Deprivation 2015.

Around 16% of adults in the neighbourhood have a degree (or higher) qualification (amongst the highest in Bolton), while around 25% have no formal qualifications. The unemployment rate in





Chorley Roads is currently 3.0%, similar to that seen across Bolton as a whole (2.9%). In addition, 6.7 residents per 1,000 are long-term unemployed (JSA claimants for more than 12 months). Again this is similar to the local average (6.6 per 1,000). Net weekly income in the neighbourhood is around £510 which is similar to the Bolton average at around £500.

The Chorley Roads neighbourhood has a similar IMD 2015 score (27.6) to that seen across Bolton (28.4) and as such is a fairly typical neighbourhood for the borough. For reference, the highest IMD score locally (most deprived) is 61.3 and the lowest (least deprived) is 5.4. This equates to 19.0% of households living in poverty, that is, below 60% of the median income (before housing costs).

Ethnicity

In Bolton as a whole 18.1% of the population are from Black and Minority Ethnic (BME) communities. Again the Chorley Roads neighbourhood has a BME population typical of Bolton (24.0% which equates to around 7,750 people).

The proportion of the Chorley Roads neighbourhood whose main language is not English is 2.7%, or 872 people; across Bolton this figure is 2.3%.

Child health

Children aged 5 to 19 face a range of transition stages, namely from primary to secondary school and the beginning of adolescence through to adulthood.

The needs of children and young people in this wide age range vary greatly as it is a period of rapid growth and development. Many of the health problems that young people develop as they grow older are rooted in their experiences of childhood and adolescence. Importantly, a sense of aspiration, achievement, and security are intrinsically linked to young people's life chances and their long term wellbeing³.

Chorley Roads has an average proportion of low birth weight births (7.0%) for Bolton; for comparison the highest local rate is 12.3% and the lowest is 4.2%. Teenage pregnancy is also fairly typical with only 1.3% of all local deliveries being to a mother under the age of 18. The average across Bolton is 1.6%, putting the neighbourhood lower than average for the borough.

A higher than average number (57.4%) of local children achieve a good level of development at age 5 in Chorley Roads (Bolton, 54.2%). However, this is lower than the national average (60.4%) and much lower than the highest achieving neighbourhood in Bolton (80.3%). This

³ JSNA Executive Summaries 2014 (Developing Well) - <http://www.boltonshhealthmatters.org/content/jsna-executive-summaries-2014>





pattern continues for local GCSE attainment, with around half (54.5%) of local children achieving 5 A*-C including English and Maths. This proportion is not far behind the Bolton (56.4%) and national (56.6%) averages, but some way behind the highest attaining neighbourhood of Bolton (78.2%).

Childhood obesity is lower in Chorley Roads than seen across Bolton for both the routinely measured age groups. Obesity and overweight levels in Year 6 are at exactly a third (33.0%) which reflects the national picture (33.4%) while being slightly lower than average for Bolton (34.5%). Obesity and overweight in Reception is 18.8%, again putting the neighbourhood in the middle 50% of neighbourhoods in Bolton.

For all A&E attendances under 18 years old, Bolton has a higher rate (362 per 1,000) than seen in Chorley Roads (291). Practices within the neighbourhood range from 238 in Dalefield Surgery to 349 per 1,000 in Cornerstone Surgery. Despite the lower overall A&E attendance rate, Chorley Road's rate of admissions shows a broadly similar pattern to that seen locally for the main conditions.

Child Health: Hospital activity (2012/13 – 2014/15)							
	Dalefield Surgery		Cornerstone Surgery		Spring House Surgery		
	Number	Rate*	Number	Rate*	Number	Rate*	
A&E attendances (<18)	1,311	238	1,006	349	1,282	320	
Emergency respiratory admissions (<18)	39	6.3	18	3.7	23	3.4	
Emergency admissions for asthma, diabetes or epilepsy (<18)	-	-	36	7.5	15	2.2	
Admissions due to injury (<18)	56	14.0	32	11.1	46	11.5	
	Heaton Medical Centre		Wyresdale Road Surgery		Chorley Roads neighbourhood		Bolton
	Number	Rate*	Number	Rate*	Number	Rate*	Rate*
A&E attendances (<18)	1,843	277	805	301	6,247	291	362
Emergency respiratory admissions (<18)	41	3.7	16	3.5	137	4.1	4.9
Emergency admissions for asthma, diabetes or epilepsy (<18)	33	3.0	8	1.7	92	2.6	3.6
Admissions due to injury (<18)	68	10.2	20	7.5	222	11.0	13.7

*Rate per 1,000 population



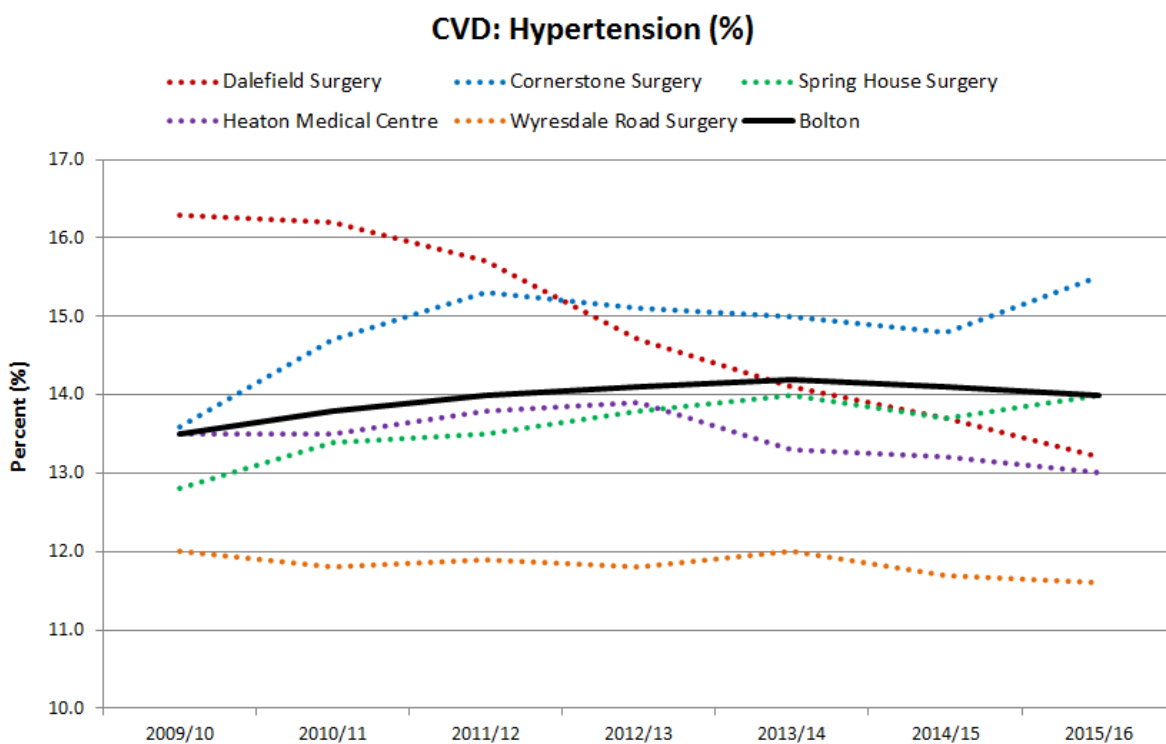


Health profile

Bolton’s biggest killers are CVD, cancer, and respiratory disease and these are conditions very strongly associated with poor lifestyle behaviours. The physical health conditions that are increasing in Bolton are diabetes, which is increasing in line with obesity, liver disease as a result of alcohol misuse, and skin cancer⁴.

CVD/risk factors

Hypertension



Overall, 13.4% (4,333 people) of Chorley Roads practices have hypertension; this proportion is higher than average for Bolton (14.0%). Within the neighbourhood, practices range from 11.6% in Wyresdale Road Surgery to 15.5% in Cornerstone Surgery. The significant reductions seen in Dalefield Surgery and the notably lower prevalence seen in Wyresdale Road Surgery are the key aspects of this area of CVD health in the Chorley Roads neighbourhood.

⁴ JSNA Executive Summaries (Living Well) - <http://www.boltonshhealthmatters.org/sites/default/files/LIVING%20WELL.pdf>

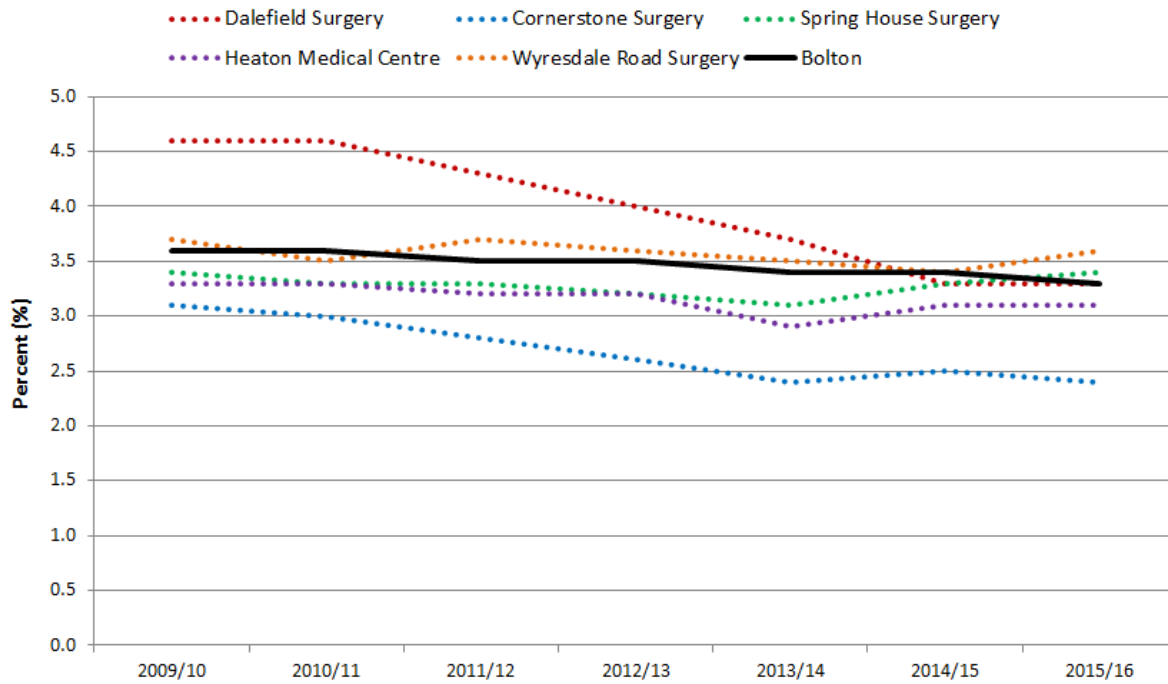




Coronary heart disease (CHD)

Within the Chorley Roads neighbourhood around 1,030 patients have CHD. The prevalence for CHD for all ages is 3.2%, which is typical for Bolton (3.3%).

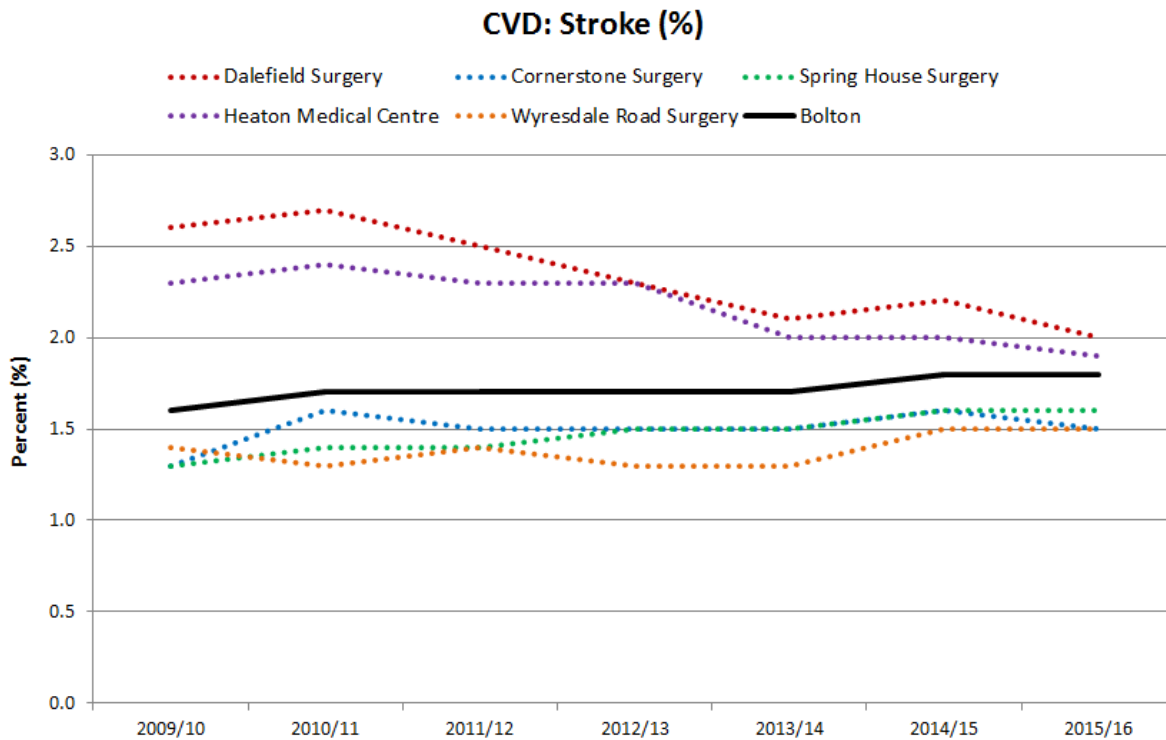
CVD: Coronary Heart Disease (%)



Stroke

The stroke prevalence for Chorley Roads (1.8%) is the same as what we see locally (1.8%) and nationally (1.7%). This equates to 566 people in the Chorley Roads neighbourhood.





Obesity

Chorley Roads (11.3%) has a lower prevalence of obese patients (aged 18+) than typical for Bolton (12.2%). This equates to 2,873 obese patients in the Chorley Roads neighbourhood. Over recent years Bolton has seen a decrease in the levels of obesity, but the prevalence still remains higher than the national average (9.5%)⁵.

The previous indicator (aged 16+) has been retired; as such no comparable trend data is currently available.

Estimated smoking prevalence

Smoking is the most significant preventable cause of ill health, premature death, and health inequalities in Bolton. Whilst the prevalence of smoking has reduced in recent years, approximately a fifth of the adult population are current smokers and ten people die each week in Bolton from smoking related illnesses⁶.

Public Health England (PHE) estimates the national smoking prevalence to currently be 18.1% with Bolton having the somewhat higher rate of 20.5%. Chorley Roads neighbourhood has an estimated prevalence (18.2%) similar to the national average and so higher than typical for Bolton. In the neighbourhood we can estimate there to be 4,810 current smokers.

⁵ National General Practice Profiles - <http://fingertips.phe.org.uk/PROFILE/GENERAL-PRACTICE>

⁶ Respiratory Disease JSNA Chapter - <http://www.boltonshhealthmatters.org/content/respiratory-disease-jsna>





Heart failure and atrial fibrillation

Chorley Roads has similar rates of heart failure (0.8%) and atrial fibrillation (1.8%) to Bolton (0.8%, 1.5%).

CVD (2015/16)							
	Dalefield Surgery		Cornerstone Surgery		Spring House Surgery		
	Number	(%)	Number	(%)	Number	(%)	
Hypertension	834	13.2	643	15.5	1,032	14.0	
CHD	210	3.3	100	2.4	253	3.4	
Stroke	123	2.0	61	1.5	121	1.6	
Obesity (18+)	652	13.4	361	11.1	620	10.2	
Smoking	1,299	25.8	646	19.0	1,059	16.9	
Heart Failure	57	0.9	27	0.7	61	0.8	
Atrial Fibrillation	124	2.0	49	1.2	122	1.7	
	Heaton Medical Centre		Wyresdale Road Surgery		Chorley Roads neighbourhood		Bolton
	Number	(%)	Number	(%)	Number	(%)	(%)
Hypertension	1,355	13.0	469	11.6	4,333	13.4	14.0
CHD	323	3.1	144	3.6	1,030	3.2	3.3
Stroke	200	1.9	61	1.5	566	1.8	1.8
Obesity (18+)	901	11.0	339	10.8	2,873	11.3	12.2
Smoking	1,144	13.4	662	20.1	4,810	18.2	20.5
Heart Failure	70	0.7	39	1.0	254	0.8	0.8
Atrial Fibrillation	188	1.8	81	2.0	564	1.8	1.5

CVD (Mar 17)							
	Practice List Size	High Risk CVD Review			Heart Failure with LVD		
		PP Register (>20% Risk)	On PP reg had annual review	(%) had annual review	LVD Register	HF Register	LVD Prev of HF Register
Dalefield Surgery	6,604	192	154	80.2%	40	55	72.7%
Spring House Surgery	7,172	124	80	64.5%	30	61	49.2%
Heaton Medical Centre	10,406	238	199	83.6%	33	62	53.2%
Cornerstone Surgery	4,045	58	52	89.7%	20	31	64.5%
Wyresdale Road Surgery	4,052	122	108	88.5%	23	32	71.9%
Chorley Roads neighbourhood	32,279	734	593	80.8%	146	241	60.6%
	Practice List Size	Atrial Fibrillation					
		AF Register	(%) Non SMK	(%) Pulse rate	(%) CHA2Ds2	(%) HAS BLED	(%) ANTI COAG
Dalefield Surgery	6,604	126	90.5%	88.9%	100.0%	100.0%	89.7%



Spring House Surgery	7,172	130	89.2%	91.5%	89.2%	86.2%	78.5%
Heaton Medical Centre	10,406	178	97.8%	94.4%	93.3%	89.9%	80.3%
Cornerstone Surgery	4,045	61	88.5%	91.8%	98.4%	96.7%	88.5%
Wyresdale Road Surgery	4,052	39	89.7%	79.5%	84.6%	82.1%	79.5%
Chorley Roads neighbourhood	32,279	534	92.3%	91.0%	93.8%	91.6%	83.0%

Cancer

Around 650 deaths each year in Bolton are attributed to cancer, which accounts for just over a quarter of all local deaths. Digestive cancers and lung cancer are the most significant cancers when we consider mortality in Bolton, accounting for around 180 and 170 deaths respectively. Lung cancer is the chief cancer associated with local inequalities due to the differences in smoking prevalence across the social gradient.

The prevalence of all cancers in Chorley Roads (2.3%) is the same as seen across Bolton (2.2%).

Cancer prevalence for all ages (2015/16)		
	Number	(%)
Dalefield Surgery	135	2.1
Cornerstone Surgery	90	2.2
Spring House Surgery	221	3.0
Heaton Medical Centre	254	2.4
Wyresdale Road Surgery	64	1.6
Chorley Roads neighbourhood	764	2.4

Cancer Screening (Mar 17)							
Practice List Size	Breast Screening (Women 50-70)			Bowel Screening (Patients 60-74)			
	Eligible Population (Women 50-70)	No. Screened within 3 YEARS	(%) screened within 3 YEARS	Eligible population (60-74)	No. screened in last 2y	(%) Uptake	
Dalefield Surgery	6,604	721	500	69.3%	887	462	52.1%
Spring House Surgery	7,172	1,032	800	77.5%	1,389	825	59.4%
Heaton Medical Centre	10,406	1,440	1,012	70.3%	1,560	944	60.5%
Cornerstone Surgery	4,045	573	161	28.1%	566	326	57.6%
Wyresdale Road Surgery	4,052	428	329	76.9%	527	258	49.0%
Chorley Roads neighbourhood	32,279	4,194	2,802	66.8%	4,929	2,815	57.1%

Practice List Size	Cervical Screening (Women 25-49)			Cervical Screening (Women 50-64)			
	Eligible population (25-49)	No. screened in last 3y	(%) Uptake	Eligible population (50-64)	No. screened in last 5y	(%) Uptake	
Dalefield Surgery	6,604	1,049	691	65.9%	522	367	70.3%





Spring House Surgery	7,172	1,027	722	70.3%	622	497	79.9%
Heaton Medical Centre	10,406	1,720	1,231	71.6%	957	758	79.2%
Cornerstone Surgery	4,045	696	541	77.7%	393	345	87.8%
Wyresdale Road Surgery	4,052	608	413	67.9%	279	244	87.5%
Chorley Roads neighbourhood	32,279	5,100	3,598	70.5%	2,773	2,211	79.7%

Respiratory disease

The term respiratory disease covers a range of conditions, but the key areas for Bolton are asthma, bronchitis and emphysema and other COPD, and pneumonia.

Respiratory disease is one of the key contributing factors to reduced life expectancy in Bolton and is the third leading cause of death. NHS Bolton spends around £26million on problems of the respiratory system, the majority of which is split between secondary care non-elective activity (£11million) and primary care prescribing and pharmaceutical services (£8million)⁷.

Asthma

In Bolton there are currently around 19,500 people on the asthma disease register (aged 8 years and over). This is likely a slight underestimation of true prevalence. The Asian Pakistani community demonstrates the highest levels of asthma and chronic cough in Bolton.

The prevalence of asthma within the Chorley Roads neighbourhood is similar to what we see in Bolton overall (6.4%) with 6.6% of the practice population on the asthma disease register; equating to around 2,100 patients.

COPD

As discussed above, the major risk factor in respiratory disease is smoking or exposure to tobacco smoke. For asthma and COPD, early diagnosis and effective treatment and management have a positive impact on long-term health outcomes.

COPD within the Chorley Roads neighbourhood (2.2%) is similar to what we see across Bolton (2.3%).

Asthma/COPD prevalence for all ages (2015/16)				
	Asthma		COPD	
	Number	(%)	Number	(%)
Dalefield Surgery	430	6.8	195	3.1
Cornerstone Surgery	216	5.2	130	3.1
Spring House Surgery	478	6.5	115	1.6

⁷ Respiratory Disease JSNA Chapter - <http://www.boltonshhealthmatters.org/content/respiratory-disease-jsna>





Heaton Medical Centre	695	6.6	176	1.7
Wyresdale Road Surgery	314	7.7	96	2.4
Chorley Roads neighbourhood	2,133	6.6	712	2.2

Asthma (Mar 17)

	Practice List Size	List size ≥ 5 <12 yrs	Asthma Register	Child Asthma (5-11 years)				
				(%) Passive SMK Advice	(%) Mng Plan	(%) Trigger Fact	(%) Asthma Control test	(%) Inhaler Tech Good
Dalefield Surgery	6,604	738	25	68.0%	68.0%	68.0%	64.0%	72.0%
Spring House Surgery	7,172	616	30	76.7%	80.0%	76.7%	76.7%	66.7%
Heaton Medical Centre	10,406	1077	45	0.0%	71.1%	71.1%	71.1%	64.4%
Cornerstone Surgery	4,045	397	16	87.5%	87.5%	87.5%	87.5%	87.5%
Wyresdale Road Surgery	4,052	444	22	31.8%	95.5%	36.4%	50.0%	90.9%
Chorley Roads neighbourhood	32,279	3272	138	44.2%	78.3%	68.1%	69.6%	73.2%

Asthma (over 12 years)

	Practice List Size	List size ≥ 12 yrs	Asthma Register	Asthma (over 12 years)				
				(%) Non SMK	(%) Mng Plan	(%) Trigger Fact	(%) Asthma Control test	(%) Inhaler Tech Good
Dalefield Surgery	6,604	5,434	402	80.8%	77.1%	75.1%	76.1%	77.1%
Spring House Surgery	7,172	6296	409	84.1%	71.9%	73.6%	72.6%	53.5%
Heaton Medical Centre	10,406	8889	615	91.2%	78.4%	81.3%	78.4%	79.2%
Cornerstone Surgery	4,045	3423	199	85.4%	84.9%	84.9%	82.9%	82.9%
Wyresdale Road Surgery	4,052	3422	272	88.2%	63.2%	59.6%	85.7%	64.0%
Chorley Roads neighbourhood	32,279	27464	1,897	86.5%	75.2%	75.6%	78.2%	71.4%

COPD (Mar 17)

	Practice List Size	COPD Register	COPD					
			(%) Non SMK	(%) Mng Plan	(%) Inhaler Tech Good	(%) Predicted Fev1	(%) screened	(%) Pulse O2
Dalefield Surgery	6,604	208	64.9%	96.6%	89.4%	87.0%	88.0%	88.5%
Spring House Surgery	7,172	121	66.9%	77.7%	64.5%	71.1%	77.7%	82.6%
Heaton Medical Centre	10,406	201	69.2%	82.1%	82.6%	83.1%	82.6%	83.1%
Cornerstone Surgery	4,045	138	54.3%	89.1%	78.3%	86.2%	87.7%	84.8%
Wyresdale Road Surgery	4,052	81	69.1%	79.0%	66.7%	18.5%	77.8%	90.1%
Chorley Roads neighbourhood	32,279	749	64.9%	86.4%	79.0%	75.8%	83.7%	85.6%

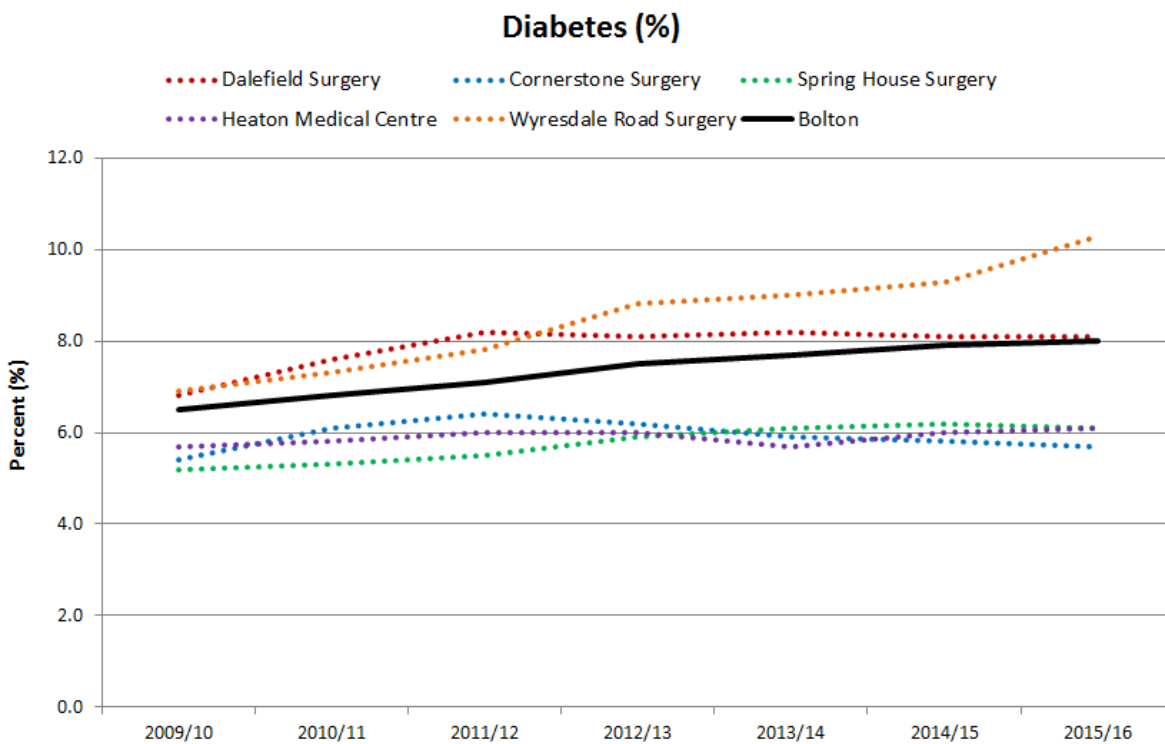




Diabetes

The number of people diagnosed with diabetes increases each year; nationally, the pace of the increase has been approximately 25% over the past six years. Commissioners need to ensure service capacity to cope with rising numbers of diabetes patients. Type 2 diabetes is by far the most prevalent diabetes and the one that is increasing. Local diabetes prevention strategies aiming to reduce the incidence of Type 2 diabetes need to engage especially with deprived communities.

Smoking, obesity, hypertension and CHD are all associated with diabetes. The QOF prevalence of diabetes within the Chorley Roads neighbourhood is 7.0%, one percentage point lower than Bolton as a whole (8.0%). The practices combined have 1,795 patients on their register; however the number of people estimated to be diabetic is higher. Evidence suggests that being of South Asian ethnicity increases the likelihood of developing diabetes and BME groups account for almost a quarter of the neighbourhood of Chorley Roads⁸.



Chronic kidney disease (CKD)

The main cause of chronic kidney disease is diabetes. Chorley Roads has a prevalence of 6.0% which equates to 1,322 people – this accounts for almost three quarters of the diabetes register in Chorley Roads.

⁸ Nomis official labour market statistics - <https://www.nomisweb.co.uk/>





Diabetes/CKD prevalence for patients aged 18+ (2015/16)				
	Diabetes		CKD	
	Number	(%)	Number	(%)
Dalefield Surgery	397	8.1	320	6.6
Cornerstone Surgery	188	5.7	22	6.8
Spring House Surgery	375	6.1	371	6.1
Heaton Medical Centre	508	6.1	391	4.8
Wyresdale Road Surgery	327	10.3	218	6.9
Chorley Roads neighbourhood	1,795	7.0	1,322	6.0

Diabetes (Mar 17)						
	Practice List Size	Diabetes 9 care processes				
		DM Register size	(%) non smk	(%) BP ≤ 145/85	(%) Chol ≤ 5mmol/l	(%) HbA1c ≤ 53 mmol
Dalefield Surgery	6,604	422	85.5%	90.5%	71.8%	54.3%
Spring House Surgery	7,172	352	86.6%	90.6%	74.7%	59.4%
Heaton Medical Centre	10,406	521	89.8%	94.6%	77.4%	58.2%
Cornerstone Surgery	4,045	177	81.9%	94.4%	78.5%	57.1%
Wyresdale Road Surgery	4,052	328	84.8%	93.9%	77.1%	59.1%
Chorley Roads neighbourhood	32,279	1800	86.5%	92.7%	75.6%	57.6%

	Practice List Size	Diabetes 9 care processes				
		(%) ACR re	(%) DM_BMI (22K)	(%) DM_RET	(%) DM_FOOT	(%) DM_CRE
Dalefield Surgery	6,604	79.4%	87.2%	74.2%	81.3%	92.9%
Spring House Surgery	7,172	73.0%	95.5%	79.5%	75.9%	90.6%
Heaton Medical Centre	10,406	75.8%	89.4%	73.5%	77.9%	94.2%
Cornerstone Surgery	4,045	63.3%	91.5%	80.8%	81.4%	92.1%
Wyresdale Road Surgery	4,052	85.1%	87.5%	79.9%	91.5%	97.0%
Chorley Roads neighbourhood	32,279	76.6%	89.9%	76.7%	81.1%	93.5%

Admissions

Chorley Roads experiences 10% more emergency admissions than is average for England and 5% less than typical for Bolton. In general, admissions in the neighbourhood across all the main disease areas are similar or lower than Bolton.

The neighbourhood only stands out for self-harm admissions, which are 30% higher than England and 10% higher than typical for Bolton. However, the area in Bolton with the highest rate of self-harm admissions is 107% higher than England.





Standardised admissions ratios					
	Chorley Roads	Bolton average	Bolton best	Bolton worst	England
Emergency Admissions, All Causes SAR	110	115	77	160	100
Emergency Admissions, Coronary Heart Disease SAR	119	127	60	275	100
Emergency Admissions, Stroke SAR	121	119	76	197	100
Emergency Admissions, Chronic Obstructive Pulmonary Disease (COPD) SAR	120	127	37	320	100
Incidence of all cancers SIR	96	100	77	128	100
Incidence of breast cancer SIR	77	93	58	123	100
Incidence of colorectal cancer SIR	101	100	51	152	100
Incidence of lung cancer SIR	109	115	44	244	100
Hospital stays for intentional self-harm SAR	130	119	33	271	100
Hospital Admissions for Alcohol Attributable Harm (narrow definition) SAR	107	106	58	207	100
Emergency Admissions, Hip Fracture in 65+ SAR	90	103	71	175	100

Mental health and depression

Mental health problems and depression are associated with high levels of deprivation for all age groups, but treatment for mental health problems can adversely affect physical health in vulnerable older people. Both physical and mental health difficulties can affect an individual's ability to care for themselves independently and potentially have major implications for their way of life and their need for services.

Depression is similar in Chorley Roads (9.4%) to Bolton (9.1%), with a register size of 2,404. However, the average for Bolton should perhaps be higher because we know from further analysis that at GP practice level depression is not as associated with deprivation as we would expect from wider research. This suggests under-diagnosis in Bolton's more deprived communities.

The prevalence of severe mental illness across Bolton, as measured by QOF, is recorded as 0.9%. Chorley Roads neighbourhood again mirrors the Bolton picture at 0.9%, equating to 292 patients within the Chorley Roads practices that have a recorded mental health issue.





Mental Health Indicators: QOF register prevalence 2015/16				
	Depression		Mental health problems (severe)	
	Number	(%)	Number	(%)
Dalefield Surgery	490	10.1	69	1.1
Cornerstone Surgery	239	7.3	37	0.9
Spring House Surgery	813	13.4	63	0.9
Heaton Medical Centre	686	8.4	78	0.8
Wyresdale Road Surgery	176	5.6	45	1.1
Chorley Roads neighbourhood	2,404	9.4	292	0.9

The prevalence of dementia across Bolton, as measured by QOF, is recorded as 0.8%. Chorley Roads neighbourhood experiences the same rate, equating to 250 patients within the practices diagnosed with dementia. However, there will be a number of local people currently living with undiagnosed dementia – across Bolton we currently have a diagnosis rate of around 73%. Finally, there are 100 people currently residing in the Chorley Roads neighbourhood with learning disabilities.

Mental Health Indicators: QOF register prevalence 2015/16				
	Dementia		Learning disability	
	Number	(%)	Number	(%)
Dalefield Surgery	48	0.8	35	0.6
Cornerstone Surgery	25	0.6	9	0.2
Spring House Surgery	56	0.8	18	0.2
Heaton Medical Centre	106	1.0	26	0.2
Wyresdale Road Surgery	14	0.3	14	0.3
Chorley Roads neighbourhood	249	0.8	102	0.4

Mental Health, Dementia and Learning Disabilities (Mar 17)							
	Practice List Size	Dementia			Learning Disabilities		
		Dementia register	Annual reviews	(%) review	LD register	Physical health checks	(%) health checks
Dalefield Surgery	6,604	47	38	80.9%	25	28	112.0%
Spring House Surgery	7,172	70	50	71.4%	21	14	66.7%
Heaton Medical Centre	10,406	114	101	88.6%	28	24	85.7%
Cornerstone Surgery	4,045	24	22	91.7%	10	9	90.0%
Wyresdale Road Surgery	4,052	25	25	100.0%	14	14	100.0%
Chorley Roads neighbourhood	32,279	280	236	84.3%	98	89	90.8%

	Practice List Size	Mental Health			Carers		
		MH register	Review / Physical health checks	(%) review / health checks	Carers register	(%) carers of list size	(%) health checks





Dalefield Surgery	6604	72	59	81.9%	155	2.3%	78.7%
Spring House Surgery	7172	63	33	52.4%	113	1.6%	50.4%
Heaton Medical Centre	10406	75	61	81.3%	230	2.2%	57.4%
Cornerstone Surgery	4045	38	33	86.8%	93	2.3%	81.7%
Wyresdale Road Surgery	4,052	44	39	88.6%	86	2.1%	82.6%
Chorley Roads neighbourhood	32,279	292	225	77.1%	677	2.1%	67.7%

ACORN demographic profile

ACORN is a segmentation tool that groups households based on where they live, and helps to understand the different types of communities that make up a larger population and their likely needs, behaviours and opinions relating to a wide range of topics.

There are two different ACORN segmentations. Both give information about the likely demographics of households, the type of housing they live in, and their socioeconomic status. In addition ACORN gives information about their interests, spending habits and use of the internet while Wellbeing ACORN focuses on topics including likely health conditions experienced, adoption of healthy lifestyle behaviours, and extent of engagement with NHS patient forums.

Approximately 60% of Bolton's population is made up of an even split between the most deprived ACORN categories '4 Financially stretched', and '5 Urban adversity'. A further 40% are evenly split between the middling category '3 Comfortable communities' and most affluent category '1 Affluent achievers'.

A third of the Bolton population falls into the Wellbeing ACORN group '2 At risk'; these neighbourhoods do not generally have high incidences of illness, however multiple unhealthy behaviours could put their health at risk in the future. Around half of the Bolton population is evenly split between the two more healthy Wellbeing ACORN groups '4 Healthy' and '3 Caution'.

The below table identifies the key geodemographics for the Chorley Roads neighbourhood and compares these proportionally with the extent to which these communities are found across Bolton as a whole.

ACORN geodemographic breakdown		
	Chorley Roads	Bolton
5.O. Young hardship	21.0%	11.0%
4.L. Modest Means	14.0%	18.0%
Wellbeing ACORN key groups		
2.9 Everyday Excesses	17.0%	11.0%
4.24 Five-a-day Greys	9.0%	2.0%





Summary of the neighbourhood population from key Wellbeing Acorn Types (figures in brackets are Bolton figures):

<p>2.9 Everyday excesses</p> <p>17% (Bolton 11%)</p>	<p>“Terraced houses... Young singles and couples... ‘doing alright’... semi-routine occupations... lack of adequate heating... high alcohol & smoking... low medication...”</p>	
<p>4.24 Five-a-day greys</p> <p>9% (Bolton 2%)</p>	<p>“Large detached... professional occupations... Private pensions... living comfortably... private health plans... good health... healthy lifestyle...”</p>	
<p>2.6 Dangerous dependencies</p> <p>9% (Bolton 5%)</p>	<p>“Less well-off estates... many children... low income... benefits... debts... sense of community... poor diets... smokers... high alcohol... anxiety and depression...”</p>	



