

# A SIMPLE GUIDE TO DUTY OF CARE FOR YOUR WASTE

right  
waste

right  
place

## ARE YOU COMPLIANT?

This guide will help you with your duty of care

56%



OF UK COMPANIES ARE NOT FULLY  
COMPLYING WITH DUTY OF CARE AND  
RELATED REGULATIONS

90%

OF NON-COMPLIANT  
BUSINESSES, WHEN  
INFORMED ABOUT  
DUTY OF CARE,  
ASPIRE TO COMPLY

94%



OF NON-COMPLIANT BUSINESSES ARE SMES  
(UNDER 250 STAFF)

1/4

OF NOT FULLY COMPLIANT BUSINESSES PUT  
ALL THEIR WASTE IN ONE BIN

## HOW CAN I FIND OUT MORE?

**Visit:** [www.rightwasterightplace.com](http://www.rightwasterightplace.com)

**Follow:** @RWRP2016

**Like:** [www.facebook.com/Right-Waste-Right-Place](https://www.facebook.com/Right-Waste-Right-Place)

**Email:** [info@rightwasterightplace.com](mailto:info@rightwasterightplace.com)



CIWM



Environment  
Agency

# A SIMPLE GUIDE TO DUTY OF CARE FOR YOUR WASTE

right waste

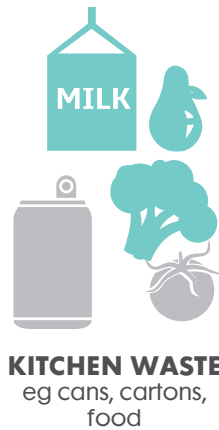
right place

## WHAT IS MY DUTY OF CARE?

By law, since 1990, it has been a responsibility of "any commercial activity" - whether run from home or its own premises - to manage the waste it produces safely and responsibly.

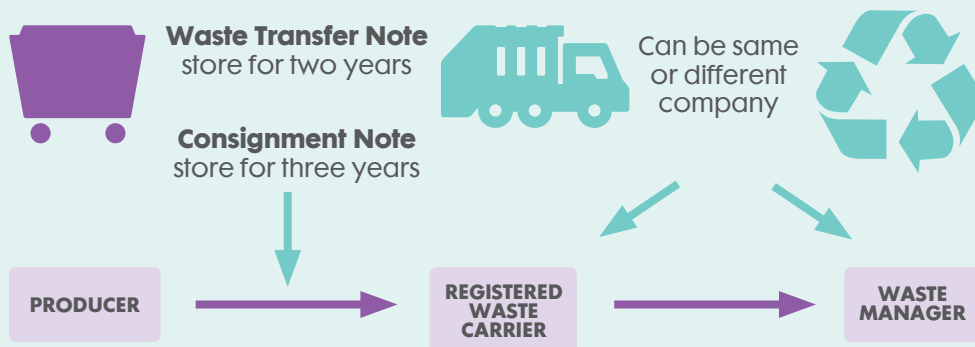
## WHAT IS WASTE?

Any material or item which you, or your business, have no further use for and wish to be removed. It might be capable of repair or re-use but you are discarding it.



## WHO DOES DUTY OF CARE APPLY TO?

It applies to everyone who produces or manages waste.



## WHEN DOES DUTY OF CARE APPLY?

Your duty of care starts from the moment you produce the waste. It continues even when you give it to a licensed waste business to deal with, until it is recovered or disposed of.

You're still responsible to check how that business deals with your waste.

If you suspect your waste carrier is not following the duty of care law you should report it.

- Call the Environment Agency hotline 0800 80 70 60 (24-hour service)

- Report online at [www.crimestoppers-uk.org/give-information/give-information-online/](http://www.crimestoppers-uk.org/give-information/give-information-online/)

# WHAT CAN I DO WITH MY WASTE?

You should determine whether the waste is hazardous or not. There are a few ways you can check this:

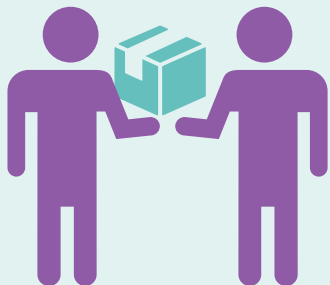


If your waste is hazardous then it needs to be dealt with by a specialist waste company. **Remember, don't mix hazardous and non-hazardous wastes together!**

## IF YOUR WASTE IS NON-HAZARDOUS, CAN IT BE...?

### RE-USED?

Could you sell, donate or swap your unwanted items?



### REPAIRED?

Search the internet for local repair services or contact your local council.



### RECYCLED?

Is it part of your waste contractor's normal recycling service? If not, contact them to find out how else they can help.



**IF NOT, IT NEEDS TO BE DISPOSED OF CORRECTLY.**

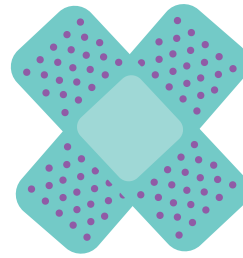
## HOW DO I STORE IT BEFORE COLLECTION?



# WHICH WASTES NEED TO BE KEPT APART?



**DRY RECYCLABLES**  
like metals, paper, glass and plastic which should be collected in individual containers where practicable

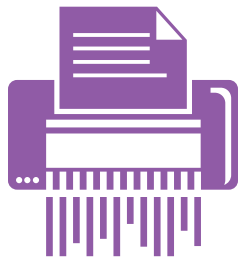


**HYGIENE OR HEALTHCARE**  
this covers sanitary waste, first aid waste etc

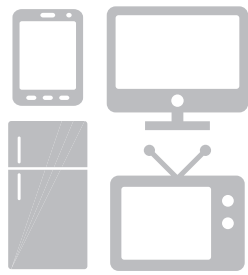


Your waste carrier or waste contractor will arrange the movement of your waste. If you intend to move it yourself you will need to be registered as a waste carrier. Each waste stream will have its own requirement for transport and will need to be addressed separately.

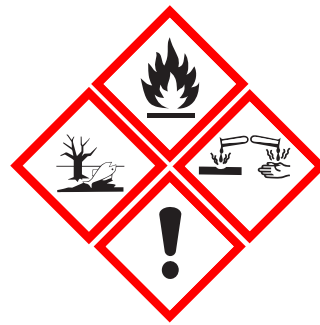
Hazardous or hygiene/healthcare wastes will have to be compliant with the Carriage of Dangerous Goods.



**CONFIDENTIAL WASTE**  
keep in secure containers and dispose of in a security-appropriate way (shredding etc)



**ELECTRONIC WASTE**  
like phones, computers, TVs, sound systems, fridges



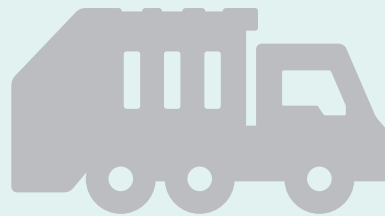
**HAZARDOUS WASTE**  
batteries, acid, oils, some light bulbs etc

## WHAT MUST I KNOW: ABOUT WHAT HAPPENS WITH MY WASTE?

**WHERE IT'S GONE**  
Licensed landfill, Energy from Waste and recycling centres

**HOW IT'S COLLECTED, TRANSPORTED, TREATED**  
Is my carrier registered?

**IS ALL THE PAPERWORK COMPLETE?**  
Waste Transfer Note and Consignment Note



## HOW CAN I FIND OUT MORE?

**Visit:** [www.rightwasterightplace.com](http://www.rightwasterightplace.com)  
**Follow:** @RWRP2016  
**Like:** [www.facebook.com/Right-Waste-Right-Place](https://www.facebook.com/Right-Waste-Right-Place)  
**Email:** [info@rightwasterightplace.com](mailto:info@rightwasterightplace.com)



environmental services association



CIWM



Environment Agency

# A SIMPLE GUIDE TO DUTY OF CARE FOR YOUR WASTE

right waste

right place

56%



OF UK COMPANIES ARE NOT FULLY COMPLYING WITH DUTY OF CARE AND RELATED REGULATIONS

90%

OF NON-COMPLIANT BUSINESSES, WHEN INFORMED ABOUT DUTY OF CARE, ASPIRE TO COMPLY

94%



OF NON-COMPLIANT BUSINESSES ARE SME'S (UNDER 250 STAFF)

1/4

OF NOT FULLY COMPLIANT BUSINESSES PUT ALL THEIR WASTE IN ONE BIN

11%

FELT THAT ISSUES WITH DISPOSING OF SPECIFIC MATERIALS WAS A BARRIER



17%

FELT COST WAS A BARRIER

Source: SUEZ

DEFRA Statistics:

The number of fly-tipping incidents increased in 2014/15 to 900,000 (5.6% increase from 2013/2014)

It cost local authorities in England an estimated £50 million to clear fly-tipping in 2014/15 (11% increase on the previous year)

Commercial waste is the second largest waste type contributing to fly tipping in England (18% increase from 2013/14-2014/15), after household waste

Waste crime costs the UK economy approximately £567 million each year (Source: ESAET)